

SOLUTION IN ACTION

Employee Onboarding: Providing Technology to Optimize Workflow

STARTING WITH THE RIGHT TECHNOLOGY

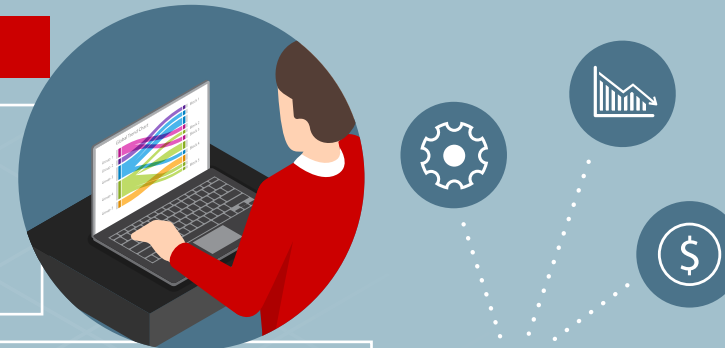
Employees are the lifeblood of any startup. **Establishing the right culture and optimizing productivity** from the get-go is crucial to success. CDW helps alleviate the burden by providing technology and services that drive innovation forward.

To do more with less and **maximize resource** efficiency, an emerging startup turns to CDW as a technology solutions partner who can fulfill an array of needs including laptops, desktops, phones, power supplies, printers, chairs and more to ensure workers **can hit the ground running**.

► **We understand your focus is on customer and product development, which limits your time to worry about IT considerations.** Let's look at an example of how a startup could partner with CDW to meet their technology needs every step of the way:

CUSTOM CONFIGURATION

CDW's Configuration Center **custom configures** each piece of hardware and software, and applies custom tagging and laser etching to each device for better **IT asset management**.



The startup leverages CDW for a customized Software as a Service (SaaS) deployment, requiring less technical intervention so employees can quickly start using the software needed to do their jobs, while **reducing costs, improving utilization and decreasing risk**.



FULFILLMENT AND SUPPORT

CDW ensures employees are armed to hit the ground running. And to take the burden of IT support off the company, **CDW offers Premium Support** to make it easy for employees and owners to quickly **access U.S. tech experts** to resolve your technology challenges on an ongoing basis. So your startup can focus on growing the business and revenue.



The startup has all technologies prepared to its unique specifications, with **custom labels and package inserts** and then ships the order via the startup's **preferred carrier**.



BEHIND THE BENEFITS

Improved onboarding positively impacts a startup's security and compliance posture. Working with CDW to develop a more effective process contributes to a healthier security policy, which resonates with customers and investors alike.



Learn how CDW can partner with your startup across your technology journey. Visit [CDW.com/startupbenefits](https://www.cdw.com/startupbenefits).

