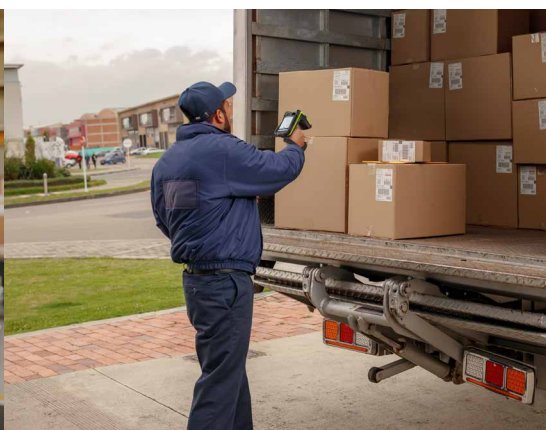


Boost Your Manufacturing and Logistics Efficiency, Quality and Connectivity with Zebra Technologies.

Zebra mobile computing, barcoding, RFID, printing and sensor technologies help you automate and error-proof your processes and connect your workforce for better efficiency and quality.



Inventory Management

- Label, tag and track your materials, components and inventory.
- Gain accurate, real-time visibility into your supply chain.



Asset Management

- Tag, track and locate tooling, equipment, vehicles, technology and assets.
- Digitize your asset management for proactive maintenance and compliance.



Work-in-Process Tracking

- Track builds and production with barcoding and RFID locating.
- Get real-time digital and mobile insights into work in process.



Machine Interface

- Control, monitor, and get easy visibility into all your production machines.
- Manage your machines and processes with digital tablet interfaces.



Transportation and Logistics

- Automate and optimize load planning, routes and navigation with intelligent AI.
- View real-time analytics, tracking and updates for better visibility and decisions.



Quality Assurance

- Digitally track, quarantine, and manage defects and exceptions.
- Automate and streamline your workflows to simplify QA excellence.



Compliance Tracking

- Simplify compliance with automated tracking, documentation, and data sharing.
- Digitally document, track and manage production, processes, and finished goods.

The Three Pillars of Zebra Process Automation and Intelligence

- 1 Automated Data Capture, Sensing and Locating
- 2 Fast, Efficient and Accurate Digital Workflows
- 3 Real-Time Visibility, Monitoring and Control



Learn more about how to automate and optimize your manufacturing, quality and logistics with CDW and Zebra Technologies.

www.cdw.com/zebra