



A Step Toward a Faster, More Efficient Future: Zebra's MC9400/MC9450

A rapidly modernizing world means a rapidly modernizing supply chain, too. Keeping up can be a challenge. It's crucial to make sure you're equipped with the best of the best to ensure you are ready for anything, because change is happening—whether we want it to or not. Do not fear—change is a good thing when you make the upgrade to Zebra's MC9400!



The Future's Here: The MC9400/MC9450

- **Most powerful MC9000 device ever** — Built with the newest wireless technologies, an exponentially faster processor, and state-of-the-art data capture solutions, this device is made to satisfy all workflow needs.
- **Second-to-none scanning range** — Configurable with a premium scan engine that provides an industry-leading scanning range—from in hand to over 100ft (30.5m) away, 20% farther than its predecessor.
- **Works with the fastest networks of today and tomorrow** — The 1st gun-style device to provide public and private 5G data only connectivity. All models also support Wi-Fi 6E, providing 4x the bandwidth and a 75% latency decrease when compared to Wi-Fi 5.
- **Immense productivity boosts** — The MC9400/MC9450 is a perfect, drop-in replacement for the MC9300. With complete backwards compatibility with MC9300 accessories, you are given a cost-effective upgrade that eliminates the need to retrain workers. Stay on top of your game while enhancing it.
- **Endless versatility** — You get more available model options than any device in this class. Whatever your workflows and environments demand, the MC9400/MC9450 is built for it all.

Embrace Modernization, Choose Zebra's MC9400/MC9450

Your employees can't outsmart the complexities of today with outdated technology. Leave yesterday in the past. Take the lead with industry-leading solutions with GO Zebra.

1. **Contact your authorized Zebra PartnerConnect Channel Partner** — As a guide to find the solutions right for you, they will consider your users, applications, work environment(s), as well as any business expenses.
2. **Purchase a Zebra product that qualifies** — Regardless of the product, we ensure that it is built with purpose to improve efficiency, boost customer satisfaction, and decrease costs.
3. **Fill out a rebate form** — Submit a form, get approved, and ship old devices within 90 days of the invoice date.
4. **Trade in and cash in** — Once your trade-in device is recycled, expect your rebate check!

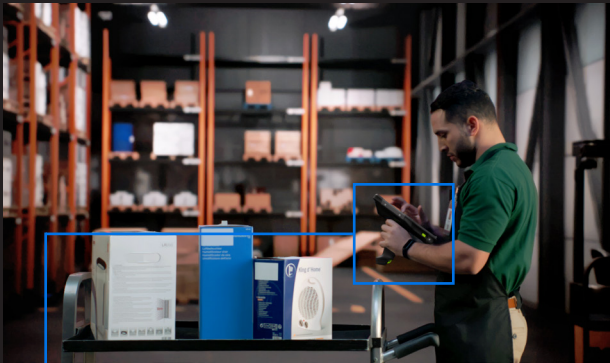
Earn up to \$400 per device when you upgrade to the MC9400/MC9450!





Versatility Defined: Zebra's MC9400/MC9450

As the industry-leading ultra-rugged mobile computer, the MC9400/MC9450 is equipped with all the newest mobile technologies to make your workflows as modern and seamless as possible. With Wi-Fi 6E and public/private 5G, 20% longer read range, 2.5x more processing power, support to Android 17, improve 12ft drop spec, and BLE battery for device tracking, these devices are ready for whatever your business calls for. Regardless of the industry, Zebra's MC9400/MC9450 is there for you.



Retail:

- Price updates/verification
- Store receiving
- Online order fulfillment
- Backroom inventory management
- Reverse logistics



Manufacturing:

- Inventory management
- Put-away
- Line-side replenishment
- Work in Process (WIP)
- Track and trace
- Quality control
- Safety testing



T&L – Ports and Yards:

- Asset management
- Shipment tracking
- Yard management



Warehouse:

- Picking
- Cross-docking
- Put-away
- Shipping & receiving
- Inventory management
- Reverse logistics
- Non-incendive
- Cold storage

Whatever your workflows may look like, face them head on with Zebra's MC9400/MC9450.