

# Who is Wacom?

wacom®

Wacom has been working for more than 40 years with the most creative people and companies to help and inspire you to make the world a more creative place. Sensational digital artwork, films, special effects, fashion designs, cars, and products used in daily life have all been conceived with the help of Wacom pen displays and graphics tablets.

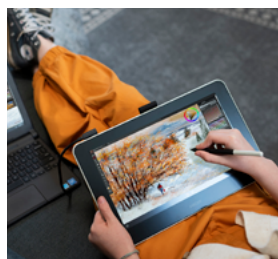
Educational institutions, banks, hospitals, and public authorities also use Wacom products for the convenience they bring when writing, editing, and signing documents and presentations.

Wacom's cutting-edge pen displays, tablets, and digital pens serve as catalysts in the way we interact with the digital realm. These innovative devices offer invaluable digital canvases and technology for artists and designers, blending the realism of traditional media with the adaptability of digital tools. At the same time, they foster greater productivity and interactive engagement in business and educational settings. With Wacom, the lines between creativity and productivity are seamlessly integrated, demonstrating how advanced digital solutions can cater to a wide variety of needs in our progressively digitalized world.



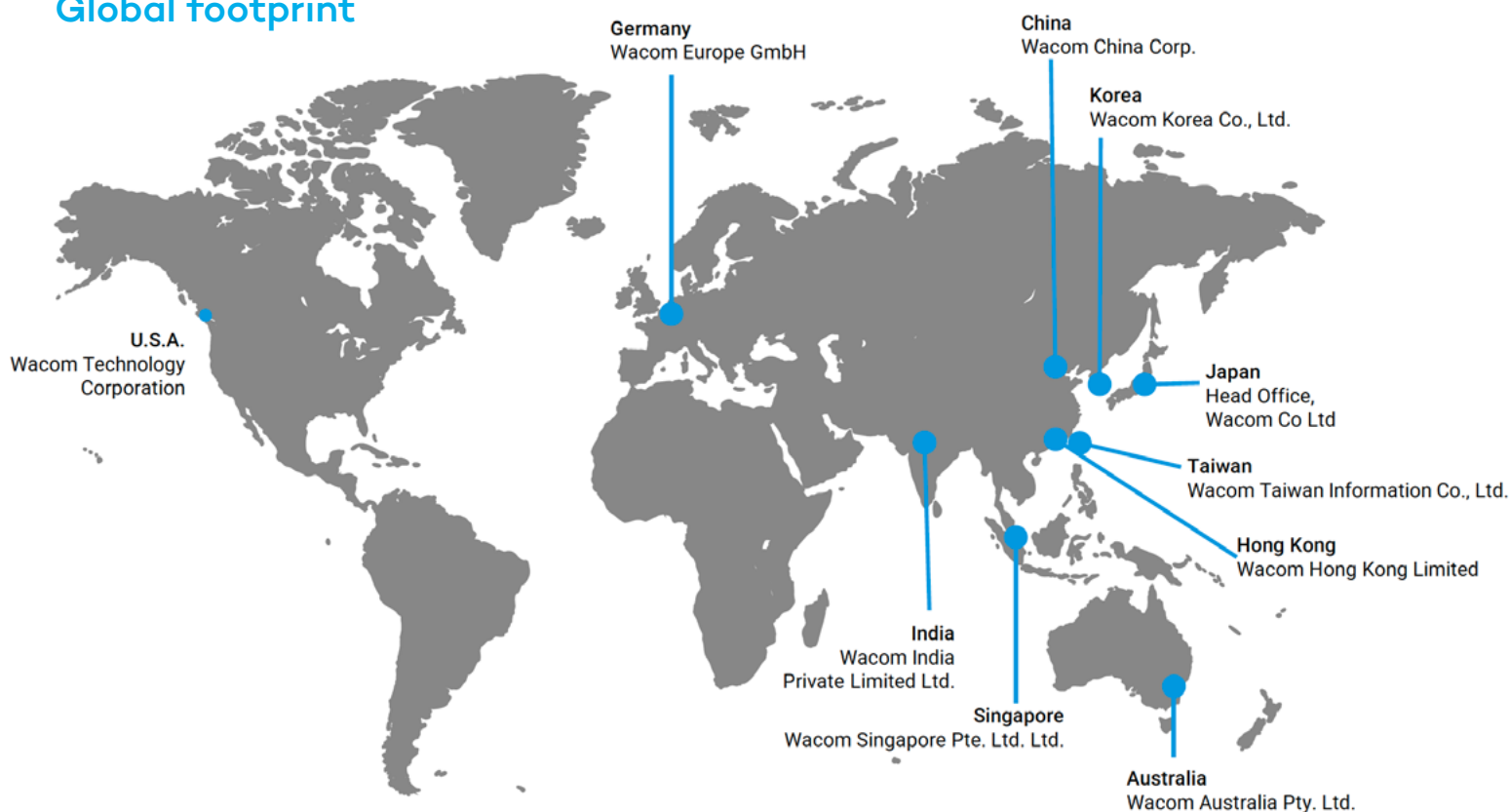
## A track record you can trust

- 40-year history
- Originators of the first pen-input device for computers
- 130+ million devices in field
- OEM supplier to Tier 1 global IT hardware vendors
- Industry standard pen interface product for Creative, Finance, Retail, Medical, Hospitality and Government
- Proven technology – Robust hardware, stable drivers and onboard user training
- Best customer support facilities in the industry





## Global footprint



Head office	Shinjuku, Tokyo Japan
Founded	1983
Paid-in-capital	4.1 billion Japanese yen
President & CEO	Nobutaka Ide
Net Sales	108.05 JPY
Employees	1,200
Stock market	Tokyo Stock Exchange 1st Section (6727)
Business Lines	Branded products (creative pen tablet, Signature pad, etc.) Technology solutions (pen & touch sensor system etc.)
Offices & Subsidiaries	(Japan) Tokyo, Osaka, Fukuoka (Overseas) U.S., U.K., Germany, China, Korea, Australia, Singapore, Hong Kong, Taiwan, India