

# Wireless Solution Guide for Small and Midsize Businesses

**NETGEAR®**  
BUSINESS



Today's insatiable demand for WiFi requires multi-gig performance and the ability to maintain constant connectivity regardless of where you are in the coverage area. Additionally, the use of wireless local area networks (WLANs) today in Small and Midsize

Businesses (SMBs) is for a disparate set of clients, growing number of devices, and latency-sensitive applications such as unified communications and video streaming / recording. To rise up to these occasions, WiFi 6 and 6E are musts.

Deploying and managing WiFi 6 and 6E WLANs can be cumbersome without the

right access points, multi-gig switches, and management tools. A remote management software tool that offers a single-pane-of-glass approach is a huge boost to customer satisfaction and offers a recurring revenue stream for providing support to business users.

## What Solutions Does NETGEAR Offer?

NETGEAR, as a leading SMB networking provider, offers a comprehensive solution to deploy these modern, effective WiFi 6 and 6E WLANs with access points, multi-gig switches, and the remote management software.

### Insight Managed Wireless Access Points

NETGEAR has a portfolio of access points (APs) with the very latest wireless standards (WiFi 6 and WiFi 6E). Designed for small and midsize businesses, NETGEAR APs deliver superior performance, reliability, and security – at SMB friendly price points. A variety of sizes and capabilities provide a choice of coverage area and connected devices with the ability to be powered via PoE for single cable deployment.

Businesses and managed service providers both benefit from the ability to remotely manage and monitor these APs through NETGEAR Insight management software.



#### WAX610

WiFi Throughput\*: 1.8Gbps  
Dual Band WiFi 6  
Ethernet Backhaul: 1 x 2.5GbE

#### WAX615

WiFi Throughput\*: 3.0Gbps  
Dual Band WiFi 6  
Ethernet Backhaul: 1 x 2.5GbE

#### WAX620

WiFi Throughput\*: 3.6Gbps  
Dual Band WiFi 6  
Ethernet Backhaul: 1 x 2.5GbE

#### WAX625

WiFi Throughput\*: 5.4Gbps  
Dual Band WiFi 6  
Ethernet Backhaul: 1 x 2.5GbE  
1 x GbE

#### WAX630

WiFi Throughput\*: 6.0Gbps  
Tri Band WiFi 6  
Ethernet Backhaul: 1 x 2.5GbE  
1 x GbE

#### WAX630E

WiFi Throughput\*: 7.8Gbps  
Tri Band WiFi 6E  
Ethernet Backhaul: 1 x 2.5GbE  
1 x GbE

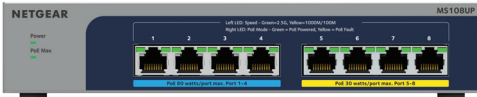
#### WAX610Y

WiFi Throughput\*: 1.8Gbps  
Dual Band WiFi 6  
Ethernet Backhaul: 1 x 2.5GbE  
Outdoor Access Point

\* Theoretical and aggregate WiFi throughput are based on optimal environmental conditions.

## Multi-Gigabit Ethernet Switches

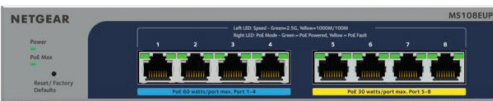
NETGEAR's multi-gig switches are designed specifically for SMBs and are the perfect complement to our WiFi 6 and 6E wireless access points. Supporting a range of speeds up to 10 Gbps on a single switch, depending on the model, the optimal speed for each connected device is automatically detected and optimized, with no need for manual intervention or on-going management. In addition to the multi-speed capabilities, these switches offer you the choice of ports with no PoE, PoE+, and PoE++, the very latest PoE standard, supporting up to 90W per port.



**MS108UP**  
8-port Multi-Gigabit (2.5G)  
Ultra60 PoE++ Ethernet  
Unmanaged Switch



**MS510TXM**  
8-Port Multi-Gigabit  
(4x 2.5G + 4x10G)  
Ethernet Smart Switch with 2 SFP+ Ports



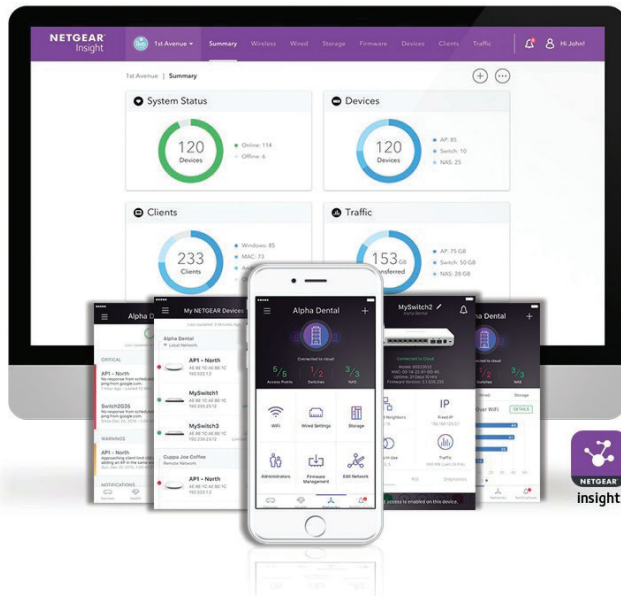
**MS108EUP**  
8-port Multi-Gigabit (2.5G)  
Ultra60 PoE++ Ethernet  
Plus Switch



**MS510TXUP**  
8-Port Multi-Gigabit  
(4x 2.5G + 4x10G)  
Ethernet Ultra60 PoE++  
Smart Switch with 2 SFP+ Ports

## Insight Remote Cloud Management

NETGEAR's Insight management solution offers the perfect toolset to help businesses become more efficient with many day-to-day networking tasks. Managed service providers (MSPs) benefit by being able to offer these tools as a recurring revenue stream.



### Benefits:

- Established service model so businesses can focus on increasing profitability
- MSPs can manage hardware and services for their customers
- Automate & replicate low value, mundane tasks to increase efficiency and scale business
- Proactively respond to client networks improving customer satisfaction and retention

## Wireless Design Services

NETGEAR offers wireless design services to support partners as they design and deploy a wireless infrastructure. This dedicated Pro WiFi Engineering Services team of experts has been conceived to empower those who are designing and installing a wireless infrastructure by providing free wireless design assistance, training, and installation support.

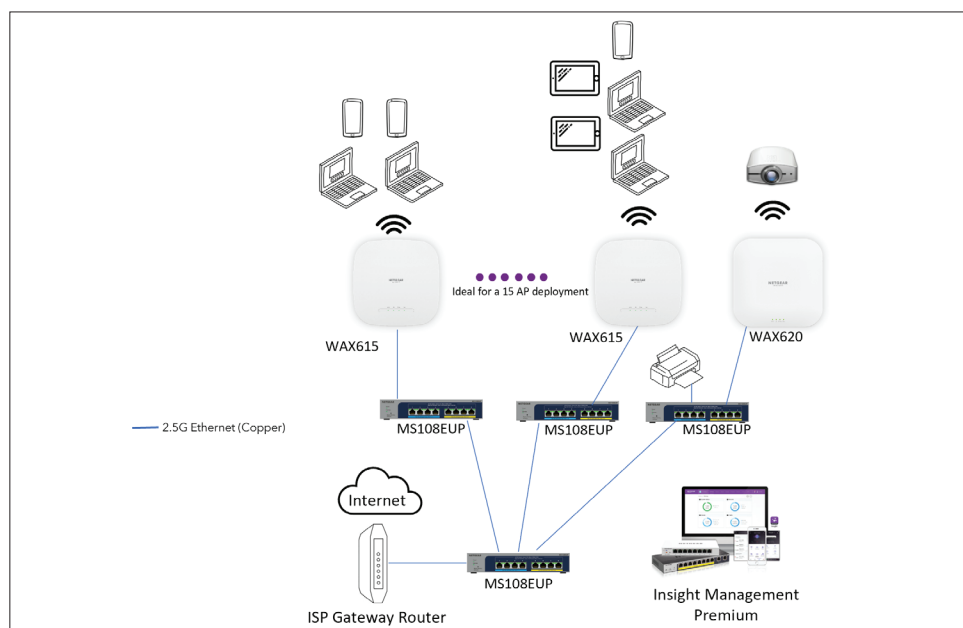
Send us an email: [ProWiFiDesign@netgear.com](mailto:ProWiFiDesign@netgear.com)

For more information on NETGEAR SMB Wired and Wireless Solutions visit: [netgear.com/business](https://netgear.com/business).

Should you need any assistance, contact your local sales associate or at [ProWiFiDesign@netgear.com](mailto:ProWiFiDesign@netgear.com) for a free consultation.

# Example Scenarios

## Silverlake Architects



### Requirements

- 200 - 300 end point devices
- 30,000 - 50,000 sq. ft
- Professional office

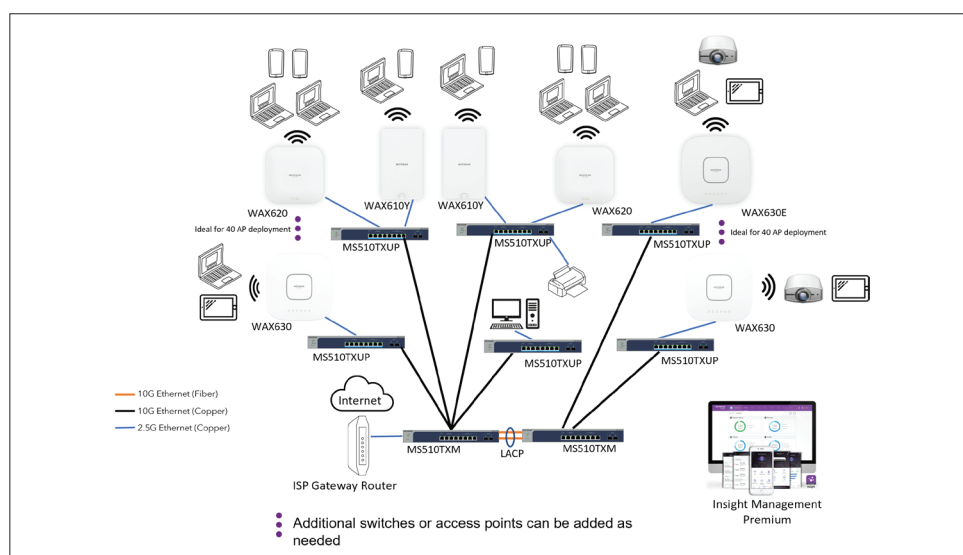
### Solution

- 15 access points (WAX615, WAX620)
- 4 PoE++ switches (MS108EUP)
- Insight Premium for local and remote management

### Benefits

- Multi-gigabit throughput everywhere
- Local and remote monitoring, maintenance, management

## Lincoln Elementary School



### Requirements

- 800 - 1000 end point devices
- 50,000 - 100,000 sq. ft
- Indoor and outdoor wireless coverage

### Solution

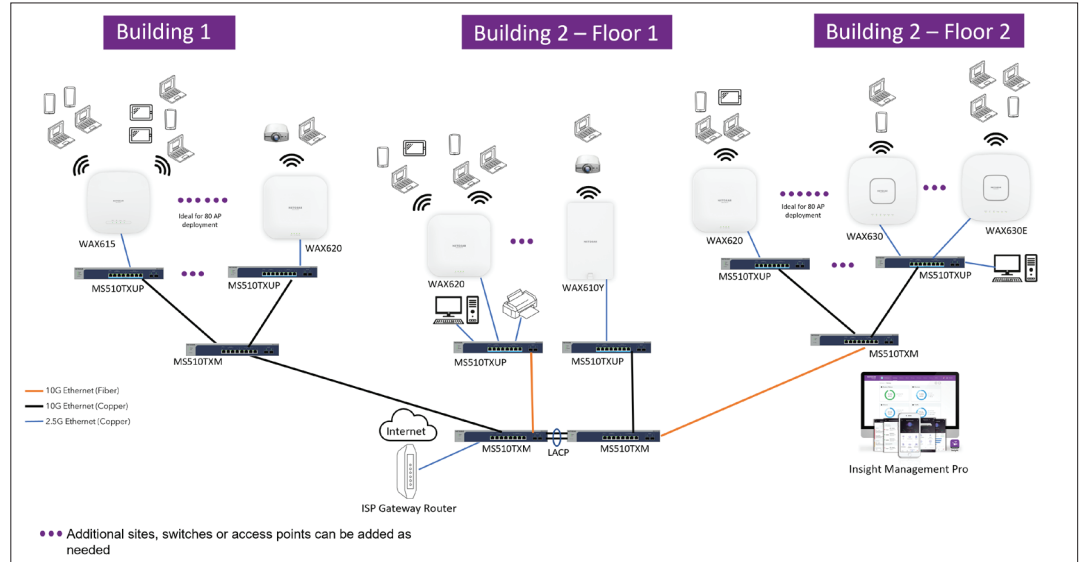
- 40 access points (WAX610Y, WAX620, WAX630, WAX630E)
- 8 PoE++ switches (MS510TXM, MS510TXUP)
- Insight Premium for local and remote management

### Benefits

- 10Gbps backbone and multi-gigabit throughput to the access points and end points
- Local and remote monitoring, maintenance, management

# Example Scenarios

## Golden Pond Retirement Community



### Requirements

- Multiple buildings, floors; multiple functional areas
- 1 acre – 3 acres
- Indoor and outdoor wireless coverage
- Separate sub-networks

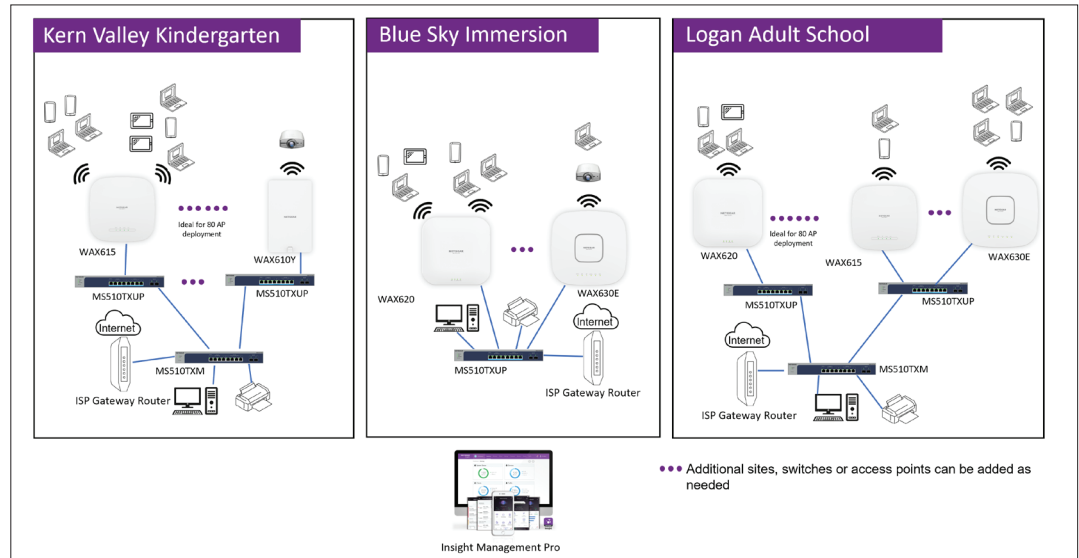
### Solution

- 80 access points assigned to multiple locations (WAX600 series, all models)
- 12 PoE++ switches (MS510TXM, MS510TXUP)
- Insight Pro, supported by a Managed Service Provider

### Benefits

- 10Gbps fiber interbuilding connectivity, 10Gbps copper backbone
- Multi-gigabit throughput to the access points and end points
- 24/7/365 professional IT service

## SimpleIT Solutions



### Requirements

- Multiple organizations, multiple locations
- 24/7/365 remote access maintenance and management
- Scalable solutions
- Indoor and outdoor wireless access points

### Solution

- Insight Managed Access Points (WAX600 series, all models)
- Insight Managed PoE++ Switches (MS510TXM, MS510TXUP)
- Insight Pro

### Benefits

- Enable a scalable service-based business model
- Remote operation without a truck roll
- Latest switching and WiFi technology