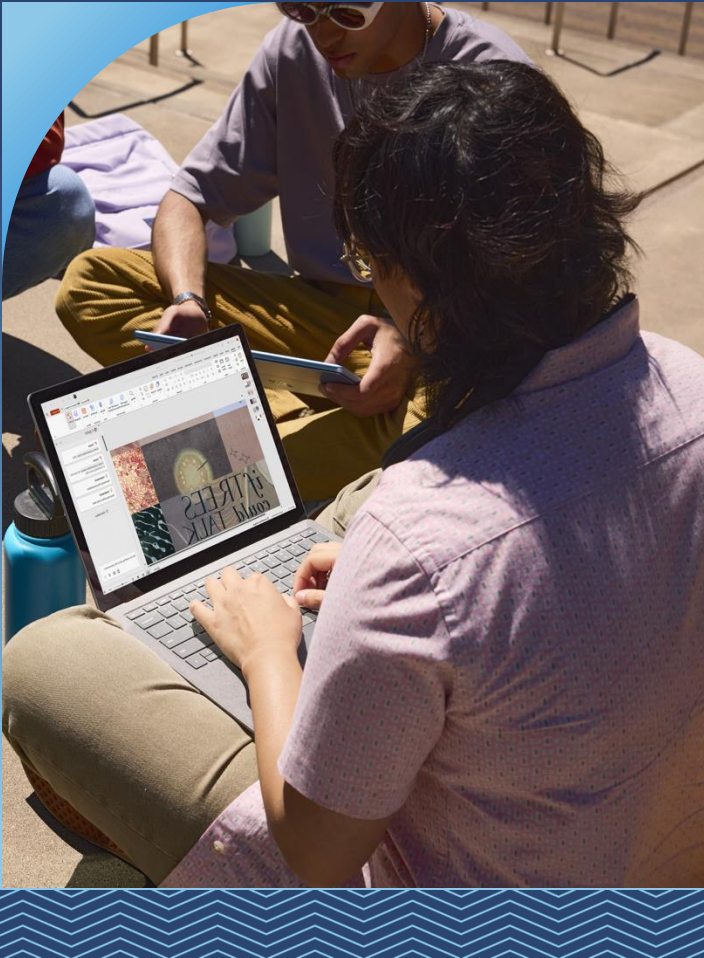


Stay protected—Your options as Windows 10 support ends



What's changing?

Windows 10 will reach End of Support (EOS) on **October 14, 2025**. After this date, devices running Windows 10 will no longer receive security updates or technical support.

What happens if I continue using Windows 10?

Continuing to run Windows 10 after EOS may expose your institution to risks, including:

- Increased exposure to **cybersecurity threats**.
- Potential for more **frequent downtime** and **IT disruptions**.
- Challenges with **insecure, unreliable learning environments and operations**.

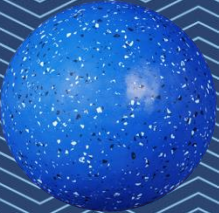
What are my options?

You have several pathways to stay secure and productive as Windows 10 support ends. Whether you're ready to upgrade now or need more time to transition, we're here to help you find a solution to fit your institution's timeline and technology goals.

What should I do next?

Start planning now to ensure a secure, seamless, and cost-effective transition. Use the accompanying decision tree and the following steps to guide your institution's next steps.

- **Inventory and assess** your [current devices](#).
- **Calculate the cost impact** of waiting vs. upgrading using the [Windows EOS Devices Calculator](#).
- **Determine your readiness** with the [Windows 11 Migration Assessment](#).
- **Test app compatibility** with [Microsoft's App Assure](#).
- **Explore device options** using the [Help Me Choose tool](#).
- **See if your school qualifies** for the [Shape the Future](#) Windows 11 device discount.

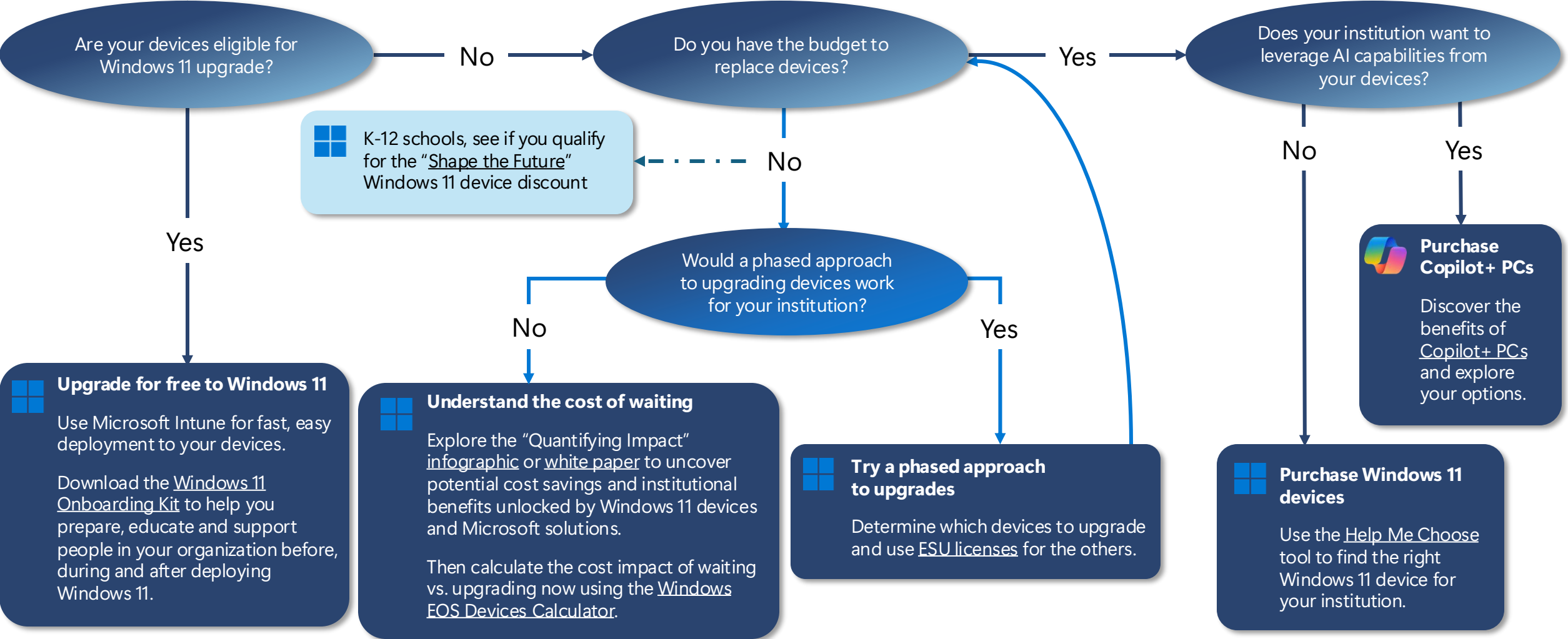


Find your path forward

Use this decision tree to quickly identify the best option for your institution based on device readiness, budget, and support needs. Follow the prompts to see whether you should upgrade, purchase new devices, or temporarily extend support.



Start by taking inventory of your current devices to see if they are [eligible for Windows 11 upgrade](#).



Are your devices eligible for Windows 11 upgrade?

No


Do you have the budget to replace devices?

Yes

Does your institution want to leverage AI capabilities from your devices?

No

Yes

 K-12 schools, see if you qualify for the "Shape the Future" Windows 11 device discount


No


Would a phased approach to upgrading devices work for your institution?


No

Yes

 **Upgrade for free to Windows 11**
Use Microsoft Intune for fast, easy deployment to your devices.
Download the [Windows 11 Onboarding Kit](#) to help you prepare, educate and support people in your organization before, during and after deploying Windows 11.

 **Understand the cost of waiting**
Explore the "Quantifying Impact" [infographic](#) or [white paper](#) to uncover potential cost savings and institutional benefits unlocked by Windows 11 devices and Microsoft solutions.
Then calculate the cost impact of waiting vs. upgrading now using the [Windows EOS Devices Calculator](#).

 **Try a phased approach to upgrades**
Determine which devices to upgrade and use [ESU licenses](#) for the others.

 **Purchase Windows 11 devices**
Use the [Help Me Choose](#) tool to find the right Windows 11 device for your institution.

 **Purchase Copilot+ PCs**
Discover the benefits of [Copilot+ PCs](#) and explore your options.