

A single platform for smarter security

Genetec Security Center for retail



Your security system can do more than just deter nuisances and crime—it should be a powerful tool that helps you and your teams work smarter. Genetec™ Security Center lets you create a fully connected operation with all your security solutions integrated for central management.



Streamline loss prevention by seeing everything from every store on one dashboard.



Improve customer experience by capturing data on behavior and traffic flow.



Scale and grow with the flexibility to add new tools for tomorrow's challenges.

Protect your profits with smarter security

Genetec Security Center is a unified platform that enhances your security and harnesses the power of your data. Genetec solutions combined with CDW's expert deployment and integration help prevent losses and improve your overall operations.

- **Create a connected store.** With all your security solutions unified, you can manage multiple systems at different locations through one platform—from video validation of point-of-sale transactions to collaborating with law enforcement.
- **Streamline loss prevention.** No more switching between systems. Save time and money by filtering out the noise to find, review and identify theft the moment it happens.
- **Improve the customer experience.** Get a deep understanding of customer behavior by seeing how people flow through your stores and analyzing data collected from your physical security system.
- **Leverage data to make better decisions.** Enhance situational awareness by accessing data from your security system, and use that intelligence to enhance decision-making across your organization.
- **Resolve issues faster.** Identify specific cameras, doors and devices across your organization—and follow digital incident management procedures—to keep operations running smoothly.
- **Scale as your needs evolve.** The Genetec Security Center supports a continuously growing array of cameras, access control devices and other solutions, so you can add new hardware without switching software.

GENETEC HELPS YOU ENHANCE YOUR SECURITY AND OPERATIONS

The Genetec unified, open architecture physical security platform gives you the flexibility to design a system that best meets your stores' goals and requirements. Genetec offers a portfolio of solutions built from the ground up with retailers in mind, providing a centralized view of your entire retail environment.

Genetec expert project managers, engineers and solution architects—plus dedicated support and training teams—help you get the most out of your physical security investment.

For more information, call your CDW account manager.

800.800.4239 | [CDW.com/retail](https://www.cdw.com/retail)



Improve efficiency and the customer experience

Here are some of the ways Genetec Security Center lets you work smarter and improve the customer experience while deterring nuisances and crime.

Restrict access

Secure valuable inventory and employee areas.

Protect parking areas

Monitor activity, deter crime and improve safety in outdoor spaces.

Customer counting

Track daily store visitors and monitor occupancy levels in real time.

Embedded POS search and video unification

View incident video right away to decide if further investigation is necessary.

Self-checkout fraud detection

Monitor and detect customer scan avoidance.

Queue monitoring

Automatically alert store personnel to long checkout lines.

Nuisance crime deterrence

Detect and deter loitering and suspicious activity in real time with event-driven audio announcements.

Embedded health monitoring tools

Get automated alerts to ensure your system is always up to date and cybersecure.

Loss prevention

Monitor all store areas for real-time theft detection and forensics investigations.

Advanced intrusion detection

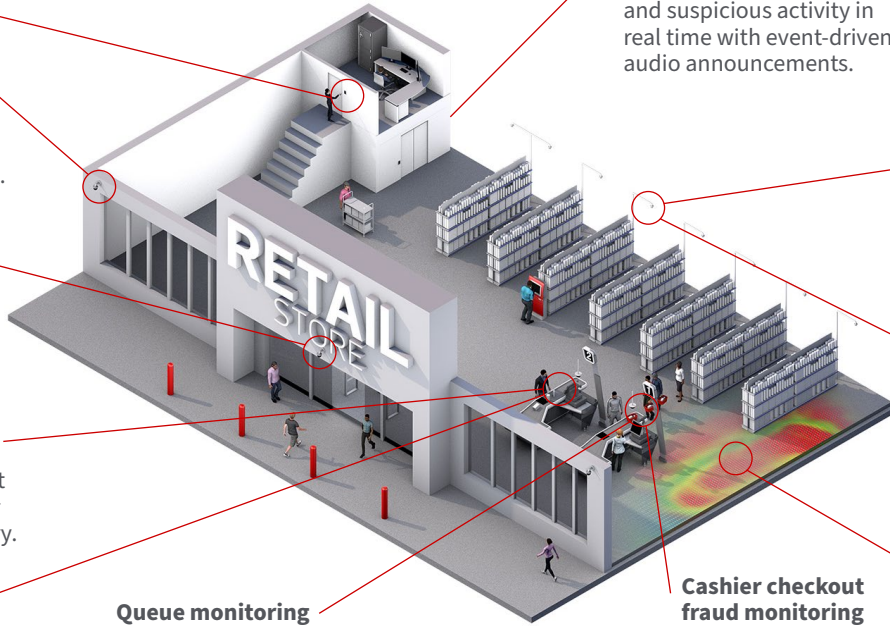
Connect motion sensors and alarms with video to evaluate incidents and reduce false alarms levels in real time.

Cashier checkout fraud monitoring

Prevent customer-not-present transactions and "sweethearting."

Retail analytics

Collect and harness data on customer footfall, traffic flow, product engagement and shopper demographics.



A single window on your entire retail security operation

When all of your security solutions are unified within Genetec Security Center, you get a complete view of your environment with centralized monitoring, reporting and alarm management across dispersed retail sites, distribution centers and corporate locations.



Reduce inefficiencies and lower security costs by monitoring multiple sites from a single location.



Protect your employees by helping them avoid involvement with suspicious individuals.



Improve the shopping experience by deterring loiterers, panhandlers and disruptive individuals from stores.

CDW IS YOUR TRUSTED PHYSICAL SECURITY INTEGRATOR

Along with robust IT capabilities, CDW offers integrated, end-to-end physical security solutions—from advanced video surveillance to sophisticated access control solutions, precise environmental monitoring and video intelligence. We partner with industry-leading OEMs, such as Genetec, to deliver national service capabilities.

CDW is an essential partner for millions of retailers worldwide, integrating the latest innovations in store connectivity, data analytics, inventory management, omnichannel sales, artificial intelligence and more.

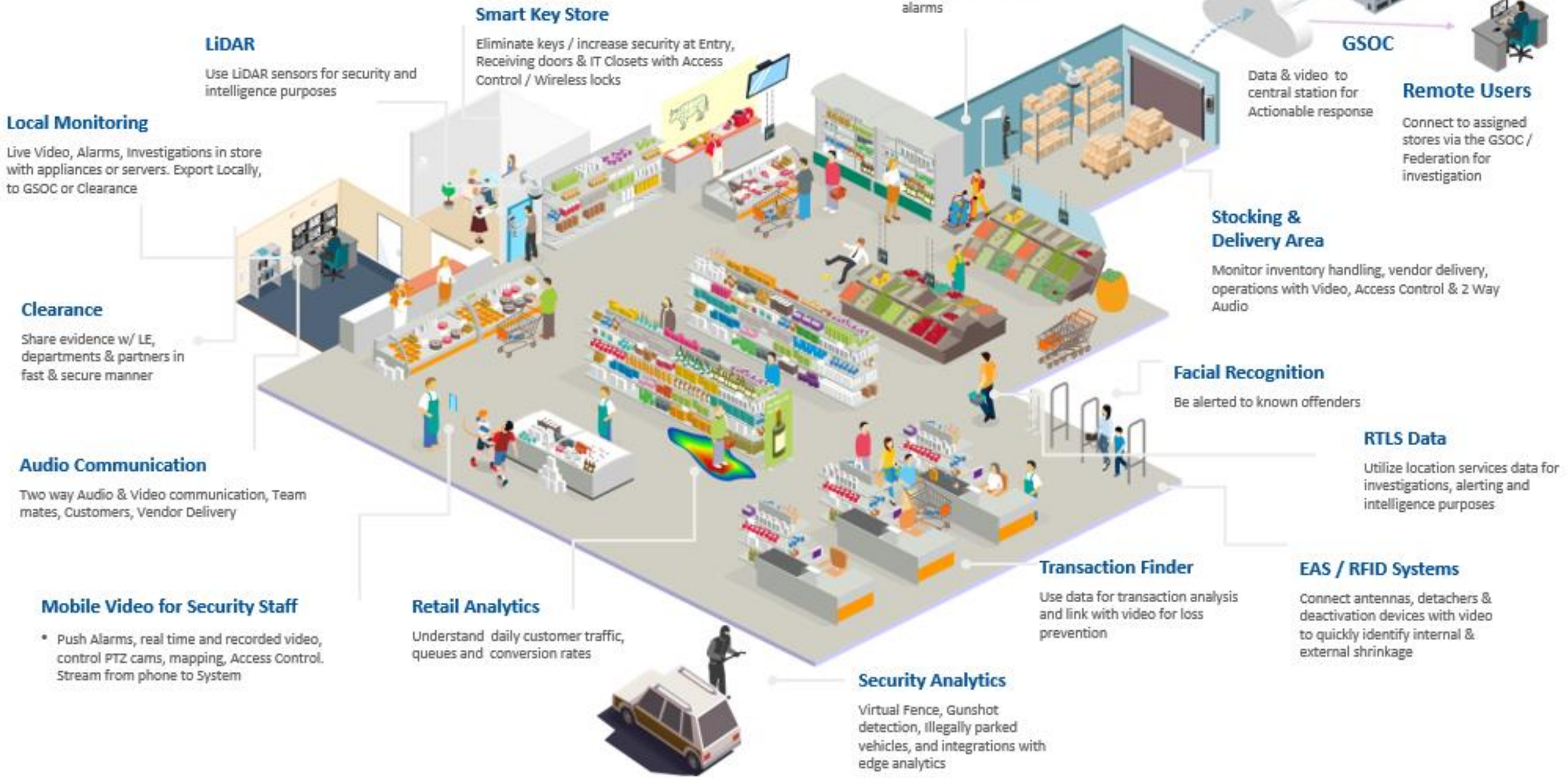


For more information, call your CDW account manager.

800.800.4239 | [CDW.com/retail](https://www.cdw.com/retail)



Retail



Bringing the best of breed open architecture

Cameras



Access Control



License Plate Recognition



SDK Integration



Infrastructure



SIP Intercoms

*Note- SC supports SIP protocol devices, Not specific models.



The Genetec open architecture ecosystem

	Locks	Alarms	Mass notification	Gunshot detection	Gun detection	Video analytics	Parking	Interoperability	
Security	<p>ASSA ABLOY</p> <p>HID</p> <p>SALTO inspiredaccess</p> <p>ALLEGION</p>	<p>BOSCH</p> <p>Johnson Controls</p> <p>STANLEY Security</p>	<p>ALERTUS®</p> <p>RAVE MOBILE SAFETY a Motorola Solutions Company</p> <p>Regroup Mass Notification</p> <p>Lynx Systems Your Link to Duress and Mass Notification</p>	<p>SOUNDTHINKING</p> <p>Shooter Detection Systems</p> <p>sound intelligence</p>	<p>omnilert®</p> <p>ZEROEYES SAVE TIME. SAVE LIVES</p>	<p>IRISITY</p>	<p>ParkMobile™ PART OF EASYPARK GROUP</p> <p>T2 SYSTEMS A VERRA MOBILITY COMPANY</p>	<p>Mutualink</p>	
	Commerce	<p>ERP/SIS</p> <p>ellucian.</p> <p>Jenzabar</p> <p>PeopleSoft</p>	<p>Library</p> <p>touchnet A Global Payments Company</p> <p>TotalCard A BadgePass Product</p>	<p>Retail</p> <p>micros®</p> <p>infoTouch a visionary touch in store</p> <p>ARBA RETAIL SYSTEMS</p>	<p>Meal plans</p> <p>touchnet A Global Payments Company</p> <p>TotalCard A BadgePass Product</p>	<p>Bookstore</p> <p>BARNES & NOBLE</p>	<p>Off campus</p> <p>touchnet A Global Payments Company</p>	<p>Housing</p> <p>ADIRONDACK NOW PART OF STARREZ</p> <p>StarRez</p>	<p>Printing/copying</p> <p>PaperCut.®</p>
		Financial	<p>Financial aid management</p> <p>touchnet A Global Payments Company</p> <p>atrium</p>						