

# Why switch to Symantec Endpoint Security Complete?

Protect your business across all devices with an easy move to SES Complete.

## CYBERATTACKS ARE ON THE RISE FOR BUSINESSES

There's only one thing that's guaranteed when it comes to managing endpoint security for your business—cyber threats are always present.



# 5X

Mid-sized businesses were almost 5 times more likely to experience a security breach by the end of 2021 than in 2019

# 156%

With a 156% increase in malware delivered via endpoints alone

In a recent survey by the Ponemon Institute:

On average, **80% of successful breaches** are new or unknown “zero-day attacks.”

These attacks target undisclosed vulnerabilities or use of new/polymorphic malware variants that aren't recognized.<sup>1</sup>



## THE POWERFUL PROTECTION OF SES COMPLETE

Security is in our DNA, and we believe it is our job to equip you with the most powerful and easy-to-use endpoint software on the planet to protect your business.

Benefits of moving to SES Complete include:

### Comprehensive protection across all devices



**Endpoint security for in-house and remote employees**

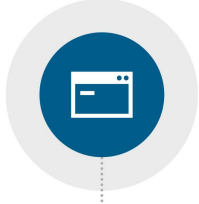
across all operating systems and devices, including mobile



**SES Complete provides better breach prevention**

than Microsoft and CrowdStrike as demonstrated in the 2021 MITRE ATT&CK evaluations

### Easy to use and activate



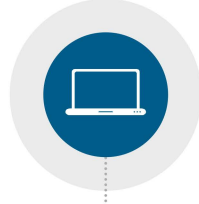
**Familiar UI**

for your team



**One-click device migration**

and “easy button” implementation to transition from SEP



**Single, user-friendly dashboard**

to manage all endpoints and activity



**Any environment:**

on-prem, in the cloud, or hybrid

### Unmatched AI and cloud-based defenses\*



**Unprecedented visibility with Threat Hunter:**

An innovative feature of SES Complete that combines AI with expert analyst research to address threats you may not even be seeing today



**Adaptive Protection**

helps you lock down your business before a breach



**Real-time threat intelligence**

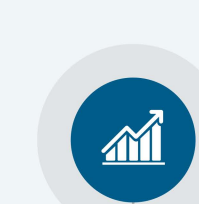
powered by Symantec's Global Intelligence Network (GIN)



**Auto-upgrades fix security issues**

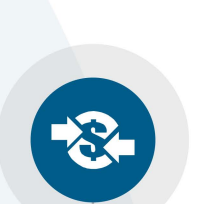
with no downtime, helping you stay one step ahead of bad actors and hackers

### Proven time and money savings



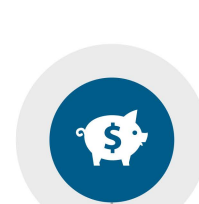
**SES Complete**

saves customers over \$300,000 per year in threat remediation



**Businesses that switched to SES Complete for endpoint**

security experienced a 437% ROI in 3 years



**SES Complete**

customers spend **10% less on other security tools**

because they get a full EPP + EDR functionality in one package with SES Complete. This results in an average savings of \$500,000 per year

“With SES Complete, we’re seeing a whole heap of activity that we never knew was even happening. **We have at least 1,000% improvement in terms of visibility and detection.**”

– Managing director, consumer credit company<sup>2</sup>

“**Since implementing SES Complete, we are saving millions of dollars** through added efficiencies, removal of manual processes, and the general reduction of resources needed to run the security operations.”

– Consulting security architect, retail banking<sup>2</sup>

### Don't wait around for bad things to happen.

Reach out to your sales specialist to learn more about protecting your business with the most innovative endpoint security on the market today.



mainframe.broadcom.com



@BroadcomMSD



Broadcom Mainframe Software

#### Sources:

1. <https://www.morphisec.com/hubfs/2020%20State%20of%20Endpoint%20Security%20Final.pdf>
2. The Total Economic Impact™ Of Symantec Endpoint Security Complete, A commissioned study conducted by Forrester Consulting on behalf of Broadcom, September 2021

\*Specific to SES Complete in the cloud