

# Barracuda CloudGen Firewall



Protect cloud-connected users, network workloads, and devices wherever they reside.

As you integrate public-cloud platforms and environments into your network, your firewalls must go beyond perimeter security and serve as the linchpins of your IT communications flow, ensuring reliable, cost-effective connections. Barracuda CloudGen Firewall was designed to optimize the performance, security, and availability of today's dispersed enterprise SD-WANs.

Barracuda CloudGen Firewall combines a complete security stack, powerful SD-WAN capabilities, and simple centralized management for hundreds or thousands of firewalls. Zero-touch hardware deployment and native cloud integration get you up and running quickly and easily in any environment.

## Full next-generation security

Barracuda CloudGen Firewall is built to provide comprehensive, next-generation firewall protection. Firewalling, IPS, URL filtering, dual antivirus, and application control take place in the data path. Sandboxing and other resource-intensive tasks are offloaded seamlessly to the cloud. All platforms and models include the same comprehensive security feature-set.

## Secure SD-WAN connectivity

In the cloud era, you need to connect branch offices with the cloud directly and securely. Connecting through a single, central gateway is costly and renders cloud based applications unresponsive. Optimized direct internet uplink selection ensures fast cloud-hosted SaaS applications. CloudGen Firewall lets you replace costly MPLS connections with up to 24 bonded broadband uplinks per SD-WAN connection for increased application performance and built-in redundancy.

## Cloud automation

The big advantage of going to the cloud is greater agility and flexibility. This requires high degrees of automation. All components, including the infrastructure for security and connectivity, need to adapt to the way this works. CloudGen Firewall provides fully automated protection across multi-cloud deployments, including SD-WAN automation across multiple cloud providers, on-site and virtual.

## Technical specs

### Firewall

- Stateful packet inspection and forwarding
- Full user-identity awareness
- IDS/IPS
- Application control and granular application enforcement
- Interception and decryption of SSL/TLS encrypted applications
- Antivirus and web filtering in single pass mode
- Email security
- SafeSearch enforcement
- Google Accounts Enforcement
- Denial of Service protection (DoS/DDoS)
- Spoofing and flooding protection
- ARP spoofing and trashing protection
- DNS reputation filtering
- NAT (SNAT, DNAT), PAT
- Dynamic rules / timer triggers
- Single object-oriented rule set for routing, bridging, and routed bridging
- Virtual rule test environment
- Network security orchestration with tufin SecureTrack

### Protocol support

- IPv4, IPv6
- BGP/OSPF/RIP
- VoIP (H.323, SIP, SCCP [skinny])
- RPC protocols (ONC-RPC, DCE-RPC)
- 802.1q VLAN
- Industrial protocols and subprotocols (S7, S7+, IEC 60870-5-104, IEC 61850, MODBUS, DNP3)

### Intrusion detection and prevention

- Protection against exploits, threats and vulnerabilities
- Packet anomaly and fragmentation protection
- Advanced anti-evasion and obfuscation techniques
- Automatic signature updates

### Infrastructure services

- DHCP server, relay
- SIP and HTTP proxies
- SNMP and IPFIX support
- JSON lifecycle automation API
- Auto VPN via API and script control
- Authoritative DNS server
- DNS server
- DNS cache
- Wi-Fi (802.11n) on selected models
- Built-in support for Azure Virtual WAN

### Remote and Zero Trust Access

- Network access control
- iOS and Android mobile device support
- Two-factor authentication via time-based one-time passwords (TOTP), Radius, or RSA MFA (requires an active Advanced Remote Access subscription) for remote access clients
- Multi-factor authentication for browser-based remote access and CudaLaunch
- ZTNA access and enforcement via Barracuda SecureEdge Access Agents

### Advanced threat protection

- Dynamic, on-demand analysis of malware programs (sandboxing)
- Dynamic analysis of documents with embedded exploits (PDF, Office, etc.)
- Detailed forensic analysis
- Botnet and spyware protection
- TypoSquatting and link protection for email

### Central management options via Barracuda Firewall Control Center

- Administration for unlimited firewalls
- Support for multi-tenancy
- Multi-administrator support & RCS
- Zero-touch deployment
- Enterprise/MSP licensing
- Template & repository-based management
- REST API

### High Availability

- Active-passive
- Transparent failover without session loss
- Encrypted HA communication

### Self-Healing SD-WAN

- Drag & drop configuration
- Optimized direct internet uplink selection
- Internet uplink optimization (forward error correction)
- Simultaneous use of multiple uplinks (transports) per SD-WAN connection
- FIPS 140-2 certified cryptography
- On-demand direct connection creation between remote spoke locations based on application type
- Dynamic bandwidth detection
- Performance-based transport selection
- Application-aware traffic routing
- Adaptive session balancing across multiple uplinks
- Application-based provider selection
- Traffic shaping and QoS
- Built-in data deduplication

## Support options

### Barracuda Energize Updates

- Standard technical support
- Firmware updates
- IPS signature updates
- Application control definition updates
- Web filter updates

### Instant Replacement Service

- Replacement unit shipped next business day
- 24/7 technical support
- Free hardware refresh every four years

## Available subscriptions

### Barracuda Firewall Insights

Consolidates security, application flow, and connectivity information from hundreds or even thousands of firewalls on the extended wide area network – regardless of whether they are hardware, virtual, or cross-cloud-based deployments.

### Malware Protection

Provides gateway-based protection against malware, viruses, spyware, and other unwanted programs inside SMTP/S, HTTP/S, and FTP/S traffic.

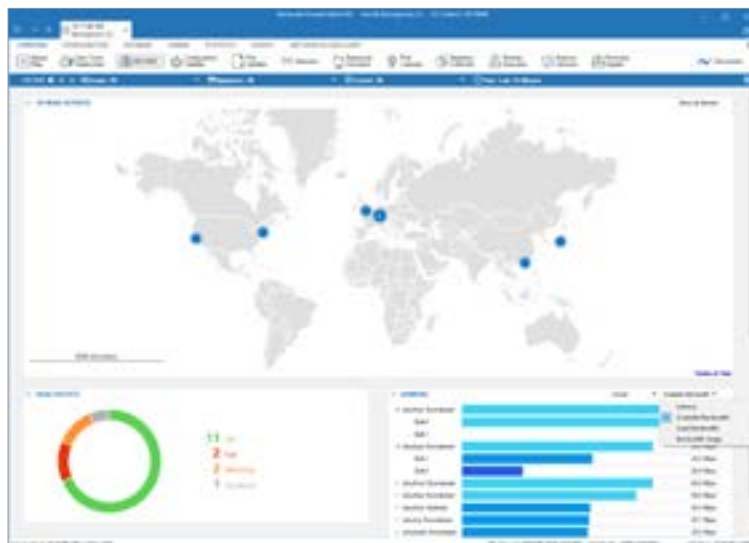
### Advanced Threat Protection

Prevents from network breaches, identifies zero-day malware exploits, targeted attacks, advanced persistent threats and other advanced malware.

### Advanced Remote Access

Provides a customizable and easy-to-use browser-based remote access as well as sophisticated network access control (NAC) functionality and CudaLaunch support.

*Barracuda CloudGen Firewall's SD-WAN dashboard provides real-time information and summaries of what is going on in an organization's network.*



## Basic features

|  | ENTRY AND BRANCH OFFICE / RUGGED | MID-RANGE | HIGH-END |
|--|----------------------------------|-----------|----------|
| Firewall incl. IPS                                   | ✓                                | ✓         | ✓        |
| Application control                                  | ✓                                | ✓         | ✓        |
| Dynamic routing                                      | ✓                                | ✓         | ✓        |
| Application-based provider selection                 | ✓                                | ✓         | ✓        |
| TLS inspection                                       | ✓                                | ✓         | ✓        |
| Secure SD-WAN  | ✓                                | ✓         | ✓        |
| Cloud connectivity automation with Azure Virtual WAN | ✓                                | ✓         | ✓        |
| Web filter   | ✓                                | ✓         | ✓        |
| Zero-touch deployment                                | ✓                                | ✓         | ✓        |
| Remote access  | ✓                                | ✓         | ✓        |

## Optional features

|                            | ENTRY AND BRANCH OFFICE / RUGGED | MID-RANGE | HIGH-END |
|----------------------------|----------------------------------|-----------|----------|
| Firewall Insights          | Optional                         | Optional  | Optional |
| Advanced threat protection | Optional                         | Optional  | Optional |
| Malware protection         | Optional <sup>1</sup>            | Optional  | Optional |
| Advanced remote access     | Optional <sup>2</sup>            | Optional  | Optional |

## Entry & branch office / rugged models

|                                   | ENTRY AND BRANCH OFFICE |                  |                  |                  |                  | RUGGED                          |                                 |
|-----------------------------------|-------------------------|------------------|------------------|------------------|------------------|---------------------------------|---------------------------------|
|                                   | F12A                    | F18B             | F80B             | F180B            | F280C            | F93A.R                          | F193A.R                         |
| <b>THROUGHPUT / PERFORMANCE</b>   |                         |                  |                  |                  |                  |                                 |                                 |
| Firewall <sup>3</sup>             | 1.2 Gbps                | 2.0 Gbps         | 2.0 Gbps         | 3.2 Gbps         | 4.8 Gbps         | 1.5 Gbps                        | 2.1 Gbps                        |
| SD-WAN <sup>4</sup>               | 220 Mbps                | 720 Mbps         | 720 Mbps         | 800 Mbps         | 1.5 Gbps         | 240 Mbps                        | 320 Mbps                        |
| IPS <sup>5</sup>                  | 400 Mbps                | 600 Mbps         | 600 Mbps         | 1.0 Gbps         | 2.0 Gbps         | 400 Mbps                        | 790 Mbps                        |
| NGFW <sup>6</sup>                 | 250 Mbps                | 400 Mbps         | 400 Mbps         | 1.2 Gbps         | 1.6 Gbps         | 400 Mbps                        | 800 Mbps                        |
| Threat protection <sup>7</sup>    | 230 Mbps                | 380 Mbps         | 380 Mbps         | 1.0 Gbps         | 1.5 Gbps         | 380 Mbps                        | 700 Mbps                        |
| Concurrent sessions               | 80,000                  | 80,000           | 80,000           | 150,000          | 300,000          | 80,000                          | 100,000                         |
| New sessions/s                    | 8,000                   | 12,000           | 12,000           | 12,000           | 12,000           | 8,000                           | 9,000                           |
| <b>HARDWARE</b>                   |                         |                  |                  |                  |                  |                                 |                                 |
| Form factor                       | Compact                 | Desktop          | Desktop          | Desktop          | Desktop          | Compact, DIN rail               | Compact, DIN rail               |
| Copper ethernet NICs [1 GbE]      | 5x                      | 5x               | 5x               | 12x              | 12x              | 2x                              | 5x                              |
| Fiber ethernet NICs (SFP) [1 GbE] | -                       | -                | -                | 4x               | 4x               | 1x                              | 2x                              |
| Wi-Fi access point                | -                       | -                | ✓                | ✓                | ✓                | -                               | -                               |
| Power supply                      | Single, external        | Single, external | Single, external | Single, external | Single, external | Phoenix 4-pin or dual, external | Phoenix 4-pin or dual, external |

## Mid-range models

|                                     | F380B            | F400C SUBMODELS  |                | F600D SUBMODELS  |                |                  |                |                |
|-------------------------------------|------------------|------------------|----------------|------------------|----------------|------------------|----------------|----------------|
|                                     |                  | STD              | F20            | C10              | C20            | F10              | F20            | E20            |
| <b>THROUGHPUT / PERFORMANCE</b>     |                  |                  |                |                  |                |                  |                |                |
| Firewall <sup>3</sup>               | 8.5 Gbps         | 13 Gbps          | 13 Gbps        | 15 Gbps          |                | 15 Gbps          |                | 20 Gbps        |
| SD-WAN <sup>4</sup>                 | 2.1 Gbps         | 3.6 Gbps         | 3.6 Gbps       | 3.8 Gbps         |                | 3.8 Gbps         |                | 6.8 Gbps       |
| IPS <sup>5</sup>                    | 2.5 Gbps         | 4.2 Gbps         | 4.2 Gbps       | 4.8 Gbps         |                | 4.8 Gbps         |                | 8.0 Gbps       |
| NGFW <sup>6</sup>                   | 2.0 Gbps         | 3.7 Gbps         | 3.7 Gbps       | 4.2 Gbps         |                | 4.2 Gbps         |                | 6.4 Gbps       |
| Threat protection <sup>7</sup>      | 1.7 Gbps         | 3.1 Gbps         | 3.1 Gbps       | 4.0 Gbps         |                | 4.0 Gbps         |                | 5.8 Gbps       |
| Concurrent sessions                 | 400,000          | 500,000          | 500,000        | 2,100,000        |                | 2,100,000        |                | 2,100,000      |
| New sessions/s                      | 15,000           | 20,000           | 20,000         | 115,000          |                | 115,000          |                | 115,000        |
| <b>HARDWARE</b>                     |                  |                  |                |                  |                |                  |                |                |
| Form factor                         | 1U rack mount    | 1U rack mount    |                | 1U rack mount    |                |                  |                |                |
| Copper ethernet NICs [1 GbE]        | 8x               | 8x               | 8x             | 18x              | 18x            | 10x              | 10x            | 10x            |
| Fiber ethernet NICs (SFP) [1 GbE]   | -                | -                | 4x             | -                | -              | 8x               | 8x             | 8x             |
| Fiber ethernet NICs (SFP+) [10 GbE] | 2x               | 2x               | 2x             | -                | -              | -                | -              | 2x             |
| Power supply                        | Single, internal | Single, internal | Dual, hot swap | Single, internal | Dual, hot swap | Single, internal | Dual, hot swap | Dual, hot swap |

## High-end models

|                                      | F800D SUBMODELS |     |     | F900C SUBMODELS |     |           |      | F1000B SUBMODELS |     |     |      |
|--------------------------------------|-----------------|-----|-----|-----------------|-----|-----------|------|------------------|-----|-----|------|
|                                      | CCC             | CCF | CCE | CCC             | CCE | CFE       | CFEQ | CE0              | CE2 | CFE | CFEQ |
| <b>THROUGHPUT / PERFORMANCE</b>      |                 |     |     |                 |     |           |      |                  |     |     |      |
| Firewall <sup>3</sup>                | 42.0 Gbps       |     |     | 53.2 Gbps       |     | 63.0 Gbps |      | 52 Gbps          |     |     |      |
| SD-WAN <sup>4</sup>                  | 11.5 Gbps       |     |     | 15.0 Gbps       |     | 20.0 Gbps |      | 15.8 Gbps        |     |     |      |
| IPS <sup>5</sup>                     | 12.9 Gbps       |     |     | 16.9 Gbps       |     | 19.4 Gbps |      | 16 Gbps          |     |     |      |
| NGFW <sup>6</sup>                    | 9.7 Gbps        |     |     | 13.0 Gbps       |     | 15.2 Gbps |      | 14.8 Gbps        |     |     |      |
| Threat protection <sup>7</sup>       | 9.3 Gbps        |     |     | 12.2 Gbps       |     | 14.1 Gbps |      | 13.5 Gbps        |     |     |      |
| Concurrent sessions                  | 3,000,000       |     |     | 4,000,000       |     | 4,000,000 |      | 10,000,000       |     |     |      |
| New sessions/s                       | 220,000         |     |     | 250,000         |     | 250,000   |      | 250,000          |     |     |      |
| <b>HARDWARE</b>                      |                 |     |     |                 |     |           |      |                  |     |     |      |
| Form factor                          | 1U rack mount   |     |     | 1U rack mount   |     |           |      | 2U rack mount    |     |     |      |
| Copper ethernet NICs [1 GbE]         | 24x             | 16x | 16x | 32x             | 16x | 8x        | 8x   | 16x              | 32x | 16x | 16x  |
| Fiber ethernet NICs (SFP) [1 GbE]    | -               | 8x  | -   | -               | -   | 8x        | 8x   | -                | -   | 16x | 16x  |
| Fiber ethernet NICs (SFP+) [10 GbE]  | -               | -   | 4x  | -               | 8x  | 8x        | 4x   | 4x               | 8x  | 8x  | 6x   |
| Fiber ethernet NICs (QSFP+) [40 GbE] | -               | -   | -   | -               | -   | -         | 2x   | -                | -   | -   | 2x   |
| Power supply                         | Dual hot swap   |     |     | Dual hot swap   |     |           |      | Dual hot swap    |     |     |      |

All performance values are measured under optimized conditions and are to be considered as "up to" values and may vary depending on system configuration and infrastructure:

<sup>1</sup> For model F12A, malware protection utilizes cloud-based malware protection as part of an active Advanced Threat Protection subscription.

<sup>2</sup> For model F12A, this feature is not available.

<sup>3</sup> Firewall throughput is measured with large UDP packets (MTU1500), bi-directional across multiple ports, utilizing highest available port density.

<sup>4</sup> SD-WAN performance is based on 1415 Byte UDP packets, bidirectional using BreakingPoint traffic generator.

<sup>5</sup> IPS throughput is measured using large UDP packets (MTU1500) and across multiple ports, utilizing highest available port density.

<sup>6</sup> NGFW throughput is measured with IPS, application control, and web filter enabled, based on BreakingPoint Realworld-IPS-Enterprise-Traffic-Mix, bidirectional across multiple ports, utilizing highest available port density.

<sup>7</sup> Threat protection throughput is measured with IPS, application control, web filter, antivirus, and TLS inspection enabled, based on BreakingPoint Realworld-IPS-Enterprise-Traffic-Mix, bidirectional across multiple ports.

Specifications subject to change without notice.

