



Discover the Premium experience

Autodesk's Premium plan is tailored for businesses managing 10 or more subscriptions, to help them operate more efficiently. An upgrade to Premium will provide additional administrative, security, and reporting benefits.

The benefits of Premium

STANDARD

Intended for under 10 subscriptions

Product usage reporting

See aggregate usage reports by frequency, version, and product to provide informed purchasing decisions, avoid version conflicts, and ensure teams are efficiently using the software.

2-step verification

Users sign in with both an Autodesk password and texted security code.

8x5 live support

Live support is available during local business hours for questions or help with technical issues.

Groups

Create and self-manage user groups and their product assignments from within your Autodesk Account without syncing to a user directory.

PREMIUM

Intended for 10+ subscriptions

Product usage reporting with user details

View and export more detailed usage by user to provide insight into usage trends and to identify power-users (who can then share product knowledge and best-in-class workflows with others).

Single sign-on (SSO)

SSO provides added security with a one-time sign-on for all Autodesk software products.

24x7 live support

Live support is available any time, including nights and weekends, for questions or help with technical issues.

Directory Sync

Connect your organization's directory with Autodesk's user management platform to automate group and product assignments.

Is Premium right for your organization?

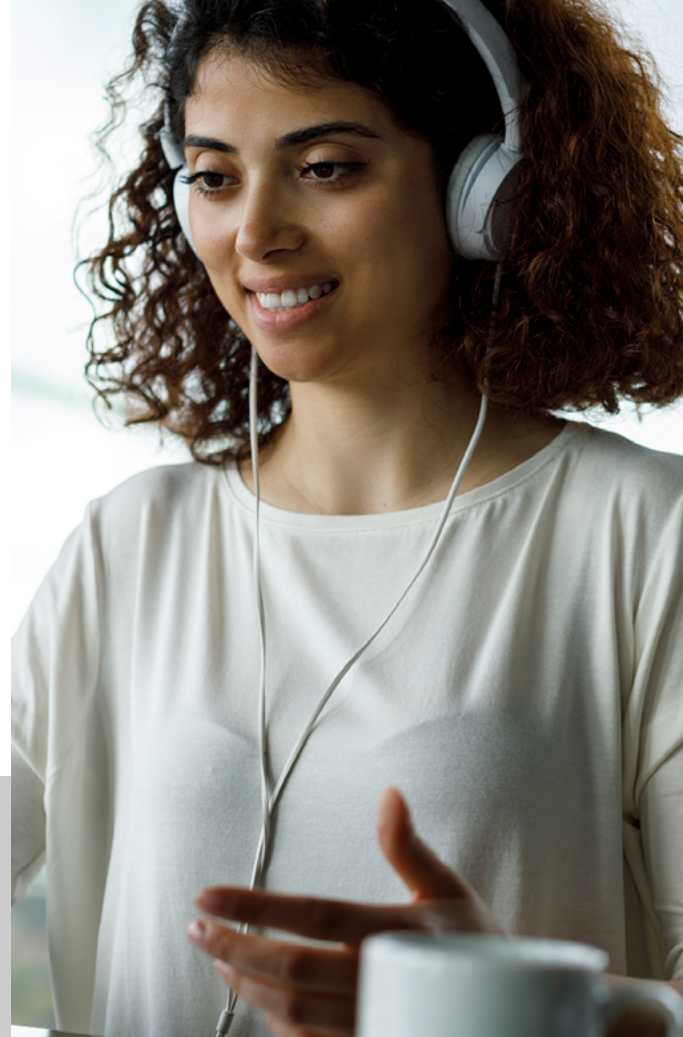
Have you ever said any of the following?

- I don't have time to manually create and add access for each user.
- I wish I could optimize my subscription based on actual use.
- Our security standards require SSO.
- My employees don't just work between 8-5; I wish I had support for critical issues all the time.

If your business manages 10 or more subscriptions and is looking for more flexibility, increased security, 24/7 live support, and more detailed usage data, then it's time to upgrade to a Premium plan.

“It exceeded our expectations. Our goals were to have global rights, to have single sign-on, and access to more products. And we got all three of those quite easily.”

Darren Pickford – Services Delivery Manager | RPS Group



Frequently asked questions

What's the minimum number of subscriptions required for each plan?

The Standard plan has no minimum requirement; all product subscriptions automatically include Standard features and services. Upgrade to the Premium plan if you have at least 10 subscriptions on Premium eligible products.

When can I upgrade my plan to Premium?

If you are on the Standard plan and want to upgrade to Premium, you can do so anytime or at your subscription renewal.

Can I downgrade later?

Premium is sold as a prepaid, annual plan. At the end of your 1-year term, you can choose to renew your Premium plan or downgrade back to Standard and lose access to the benefits of Premium.

How can I purchase a Premium plan?

Any product subscription you purchase online, through your reseller, or through your Autodesk representative will include the Standard plan. To upgrade to Premium, work directly with your Autodesk reseller or representative.

Ready to upgrade?

Contact your reseller or Autodesk representative to upgrade today.