

# HPE GreenLake for Private Cloud Business Edition with HPE Morpheus VM Essentials Software



Every organization wants to unleash the power of its data to drive digital transformation. But fragmented infrastructure complexity, manual processes across diverse environments across hybrid cloud, and infrastructure silos spanning edge to cloud are impeding data-driven innovation and agility and creating business risk.

Customers are looking for a radically simplified experience for data infrastructure at scale across the lifecycle — from streamlined device deployment to virtual machine (VM) provisioning, to a global VM and infrastructure management. They are looking for a cloud-native control plane that scales with infrastructure, so managing hundreds of systems across geographies is as simple as one.

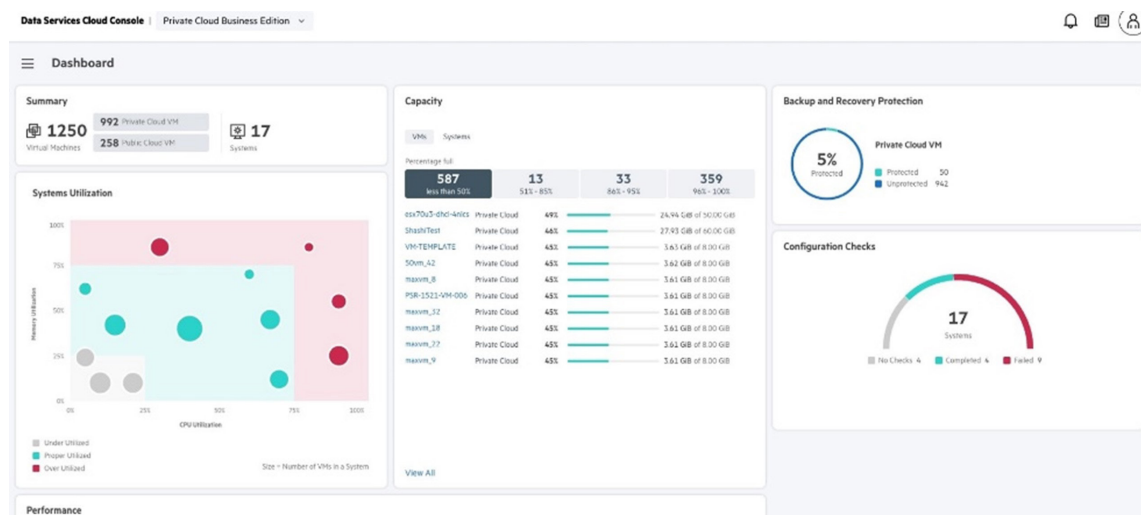


Figure 1. HPE GreenLake for Private Cloud Business Edition global dashboard

## Simplify infrastructure operations with cloud agility

Hewlett Packard Enterprise provides HPE GreenLake for Private Cloud Business Edition delivering VMs across hybrid cloud. With this offering, you can build your self-service cloud on demand when and where you need it in data centers, at the edge, and beyond. HPE GreenLake for Private Cloud Business Edition changes the way you procure and manage VMs with a cloud operational experience. HPE GreenLake for Private Cloud Business Edition helps eliminate complexity with a unified cloud service for VM-to-infrastructure management, including public cloud VMs. The solution — delivered through the Data Services Cloud Console — enables global unified management and monitoring of VMs and infrastructure deployed at any location as well as

1-click, multisite upgrades. This enables IT to reduce operating costs while helping optimize resource utilization, move to a generalist model, and shift from managing infrastructure to managing VMs and data, thereby refocusing resources and skills on higher-value strategic initiatives.

The VM-based cloud offering brings the agility of cloud operations and the ease of cloud ownership to apps and data everywhere. Build your cloud on demand where you need it, in your data center or at the edge. Shift from traditional VM and infrastructure ownership to flexibly consume hybrid cloud VMs with a choice of pay-per-use\* for predictable monthly costs or via up-front payment.

\* May be subject to minimums or reserve capacity may apply

## Key features

**Faster time to value:** Self-service cloud management and blueprints to accelerate agility and speed deployments. HPE GreenLake for Private Cloud Business Edition abstracts the control and management plane from the underlying infrastructure to the HPE GreenLake cloud. It's multicluster and multisite aware. It provides cloud-managed infrastructure, which means you have everything you need at your fingertips to globally deploy, manage, upgrade, and optimize your entire fleet of VMs and infrastructure — wherever it is in the world — from any location and on any device. You can choose to quickly deploy the solution at Equinix colocation facilities for faster time to value from a proven, global colocation provider. The cloud-native control plane scales autonomously with infrastructure, so managing hundreds of systems across geographies is as simple as managing one.

**One-stop management:** Simplify VM management across on-prem and public clouds from a single console. The solution streamlines VM to infrastructure management across hybrid cloud. Agile self-service is enabled from a single, global dashboard to give customers control. Automated provisioning of VMs and applications works from within our platform.

**Self-service, agile experience:** Flexibly consume resources, on demand. Shift from owning data infrastructure to simply accessing and utilizing it without heavy up-front costs. Easily get the HPE GreenLake for Private Cloud Business Edition resources you need, faster with a workload-optimized solution — delivered to you. You gain a simplified, self-service experience based on the VM resources needed. While some managed services are not suitable for all needs, HPE GreenLake for Private Cloud Business Edition enables self-service through automation to simplify operations and transform faster. All this while maintaining control of your data on-premises and optionally at Equinix.

**Get time back with automation:** Solves day 2 and beyond issues faster with industry-leading AI-managed, self-service resources; 86% of issues are resolved automatically.<sup>1</sup> To speed on-premises upgrades, the solution supports single-site or multisite, multisystem upgrades that save time and help eliminate complex lifecycle management across compute, storage, and hypervisor resources.

**Built for any app:** As the evolution of HPE hyperconverged solutions leveraging HPE Alletra dHCI with HPE Alletra Storage MP B10000, the solution is highly resilient with up to 100% data availability guaranteed and delivers leading performance.<sup>2</sup> The solution supports scaling compute and storage independently to meet your needs without waste and with reduced licensing costs. It's ideal for mission-critical apps that need to be always on and always fast, and it meets business-critical and general-purpose app requirements for privacy, data location, and compliance.

**Built for workloads at the edge:** An efficient all-in-one solution, powered by HPE SimpliVity, for general purpose and edge sites, delivers two-node high availability in a compact footprint with 99.999% data availability to ensure apps are available and includes built-in data services and data protection.<sup>3</sup> It's ideal for delivering secure, resilient cloud resources across distributed sites and the edge with a simplified operational model.

**Choice of hypervisors:** Provide customers with choice, flexibility, and control with a strategy leveraging existing hypervisors and HPE Morpheus VM Essentials Software.<sup>4</sup> Simplify management across existing hypervisor clusters and HPE VM hosts with a unified experience.

**Harness hybrid cloud data protection and VM mobility:** To help with business continuity and managing risk, the service goes beyond resiliency with extra VM-centric data protection, rapid restore, and VM mobility for disaster recovery. Seamless data mobility helps ensure your hybrid cloud is protected.

As HPE, we are dedicated to helping enterprises navigate the complexities of today's evolving IT landscape. By optimizing costs, modernizing infrastructure, and simplifying operations, we empower customers with virtualized infrastructure to focus on innovation and growth.

<sup>1,2,3</sup> [“HPE Storage substantiation,”](#) HPE, 2024

<sup>4</sup> Target availability in first half of calendar 2025



**Learn more at**

[HPE.com/HPE-GreenLake-Private-Cloud-Business-Edition](https://hpe.com/HPE-GreenLake-Private-Cloud-Business-Edition)

[HPE.com/virtualization](https://hpe.com/virtualization)

Visit [HPE.com](https://hpe.com)

[Chat now](#)

© Copyright 2025 Hewlett Packard Enterprise Development LP. The information contained herein is subject to change without notice. The only warranties Hewlett Packard Enterprise products and services are set forth in the express warranty statements accompanying such products and services. Nothing herein should be construed as constituting an additional warranty. Hewlett Packard Enterprise shall not be liable for technical or editorial errors or omissions contained herein.

a50011713ENW, Rev. 1

HEWLETT PACKARD ENTERPRISE

[hpe.com](https://hpe.com)

