



**Amazing happens when
your business moves at
the speed of technology.**

Modern organizations across all industries struggle to keep pace with the demands of a technology-focused, innovation-driven, digitally connected landscape.

IT teams grapple with legacy infrastructures and disparate platforms while being torn between handling day-to-day technology maintenance and driving company innovation.

Today's organizations need all the support they can get — by way of services that take the burden off IT staff, bolster growth and help organizations achieve their desired outcomes.

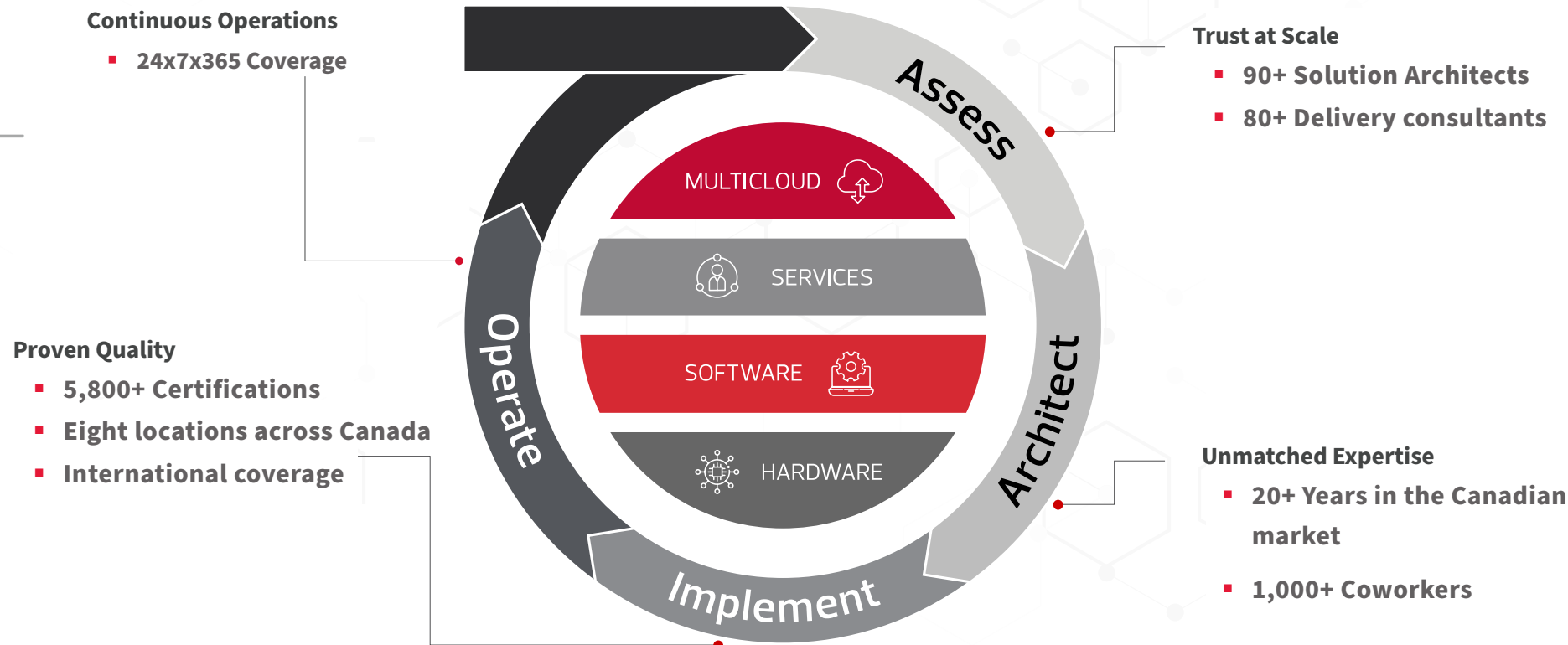




Technology Drives Organizational Outcomes

In today's competitive market, the speed of digital priorities is critical to success. Yet, technical complexities can slow progress. CDW's full-stack engineering services team focuses on digital transformation — from code and applications to cloud, data and security — to help you accelerate innovation, enhance customer experiences and optimize collaboration, all while delivering agility and cost efficiencies to your business.

FULL STACK. FULL LIFECYCLE. FULL OUTCOMES.





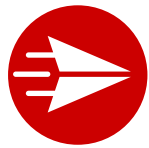
Some of our partners



And many more

Get More from Your Technology

We know IT. That's our business. When you partner with us, we take the extra load off your IT team. That way, they can focus on initiatives that turn IT into a competitive advantage while we help you maximize your IT investments and deliver real value for your customers. Our experts help you **assess, architect, implement and operate** your technology environment.



ASSESS

Our certified experts provide a suite of assessment services to help organizations understand their current level of maturity and plan steps to continue their journey towards an optimized hybrid cloud operating model. We focus on the following key areas of growth: portability, manageability, observability, resiliency and security.



ARCHITECT

We will help you build the plan to train your people, update your processes and implement technologies to accelerate your ability to handle the current and future technology needs. We take business goals and objectives and turn them into implementation plans and architectures that drive success for our customers.



IMPLEMENT

CDW Canada has a host of services to help customers train skills, change processes and implement technologies that deliver on business goals and objectives. From industry-leading professional services delivery consultants to staff augmentation services, CDW services provide what is needed to help customers be successful in their most complex projects.



OPERATE

Managed services are core to CDW Canada's ability to assist customers. More and more organizations are looking to consume "as a service" and our managed services SOC and NOC support customers with 24x7x365 coverage of their critical systems.



Infrastructure Services

CDW Canada's infrastructure services provide expertise, tools and resources to scale and future-proof your infrastructure. We help you upgrade your existing architecture and prepare for what's to come, whether you're on-premises, migrating to the cloud or already there.

Professional Infrastructure Services

As pressures mount for IT departments to deliver more services faster, infrastructures are being strained. Our experienced team of infrastructure professionals can help you discover hidden opportunities and navigate the solutions that best fit your environment.

[\[Explore Managed Infrastructure Services\]](#)

Artificial Intelligence

- **AI Hackathon**

CDW's AI Hackathon is a structured, one-day engagement preceded by a half-day workshop and targeted pre-training. It addresses specific, business-relevant use cases (defined in advance) and culminates in minimum viable product (MVP) demonstrations judged by executive stakeholders.

- **AI Use Case & Prioritization Workshop**

CDW's Use Case Ideation & Prioritization Workshop guides your team to identify, prioritize and build business cases for AI POCs that deliver real value. In just one day, you'll move from possibilities to a concrete roadmap with ROI-validated use cases ready for implementation.

- **Gen AI Workshop**

CDW recognizes the critical need for businesses to harness the power of artificial intelligence (AI) to drive growth, efficiency and transformation. Our exclusive Gen AI Workshop empowers your team with the knowledge and practical skills needed to navigate the AI landscape confidently.

- **Mastering Operational AI Transformation (MOAT)**

Our Mastering Operational AI Transformation (MOAT) is a broad-spectrum consulting engagement and programmatic approach aimed at distinguishing the valuable insights from the noise in today's information landscape. MOAT holistically looks across whole enterprises to plan and execute on emerging technologies that serve the whole business. The program equips cross-functional leadership teams with a common language, agility and actionable understanding of opportunities and threats to all aspects of business.

Data Centre

- **Application Firewall**

Deliver application firewall to allow only the authorized traffic. This is achieved via the advanced firewall manager (AFM) module.

Supported Vendors: F5

- **Cisco Meraki Rapid Deployment**

Base installation of Meraki MX device(s), with the option of adding common-use cases to the device, such as SD-WAN, site-to-site VPN and SSLVPN for user connectivity.

Supported Vendors: Cisco Meraki

- **Cisco Switch Configuration**

CDW's Cisco Switch Configuration service allows customers to quickly provision their new Cisco Catalyst hardware as part of a greenfield deployment while benefiting from CDW's professional expertise and best practices workflows.

- **Cloud Storage Deployment**

Deploy and configure the services on the cloud as per the customer's requirement.

Supported Vendors: AWS Data Sync, AWS FSx, Azure NetApp Files, Backup (DR), CVO, NetApp Cloud Sync and NetApp Cloud Manager

- **Cluster Switch Deployment/Upgrade**

Upgrade the storage to switchless to the switched cluster with cluster interconnect switches. Upgrade the switch software and hardware.

Supported Vendors: Broadcom



▪ **Data Centre Build and Migration**

For large enterprises to migrate to future-proof data centre technologies such as ACI or NSX-T, we provide professional services to design/deploy and migrate seamlessly. For small-medium enterprises, we design and deploy a robust network with traditional equipment and technologies.

Supported Vendors: Arista, Aruba, Cisco and VMware

▪ **DDoS Protection**

Deliver Distributed Denial of Service (DDoS) Protection with the ASM module.

Supported Vendors: F5

▪ **DNS Design and Implementation**

BIG-IP DNS Design and implementation.

Supported Vendors: F5

▪ **F5 as an Identity Provider (IdP)**

Deliver the BIG-IP as an identity provider either for cloud or on-premise applications.

Supported Vendors: F5

▪ **F5 as a Service Provider (SP)**

Deliver the BIG-IP as service provider to get access to on-premise applications.

Supported Vendors: F5

▪ **F5 QuickStart**

BIG-IP cluster design and implementation (HA). Cloud-based or on-premise.

▪ **HCI Deployment**

Multi-node cluster deployments, upgrades, virtual machine data migration and virtualization.

Supported Vendors: Cisco UCS, FlexPod, NetApp and Nutanix

▪ **High-Performance Computing**

The power and speed of high-performance computing (HPC) can help you process, sort and analyze large datasets in a fraction of time in comparison to traditional computing. CDW has the expertise, capabilities and resources to support you wherever you are in the HPC journey. We can provide full turn-key/white glove solutions or provide professional services to help you with specific requirements in supporting your HPC environment.

▪ **HCI Deployment**

Multi-node cluster deployments, upgrades, virtual machine data migration and virtualization.

Supported Vendors: Cisco UCS, FlexPod, NetApp and Nutanix

▪ **High-Performance Computing**

The power and speed of high-performance computing (HPC) can help you process, sort and analyze large datasets in a fraction of time in comparison to traditional computing. CDW has the expertise, capabilities and resources to support you wherever you are in the HPC journey. We can provide full turn-key/white glove solutions or provide professional services to help you with specific requirements in supporting your HPC environment.

▪ **HPE Alletra Rapid Deployment**

The HPE Alletra Rapid Deployment service ensures a seamless, efficient deployment of your HPE Alletra array by certified CDW engineers. This service minimizes implementation time, reduces risks and follows HPE's best practices to optimize performance for your specific business needs, allowing your IT team to focus on core operations.

▪ **HPE MSA Rapid Deployment**

The HPE MSA Rapid Deployment service ensures a seamless, efficient deployment of your HPE MSA array by certified CDW engineers. This service minimizes implementation time, reduces risks and follows HPE's best practices to optimize performance for your specific business needs, allowing your IT team to focus on core operations.

▪ **Kubernetes & Applications**

Deploy and configure the Kubernetes cluster nodes and install the required application. Configure application data lifecycle management service for stateful applications using Astra.

Supported Vendors: Astra, Google K8s and NetApp

▪ **LAN/WAN Network Refresh**

Replacement of end-of-life devices with the latest devices. We have the expertise to work with any LAN/WAN vendor, and we are proficient in handling heterogeneous vendor environments.

Supported Vendors: Aruba, Brocade, Cisco, Dell, Fortinet, HPe and Meraki

▪ **Load Balancer**

Deliver virtual server to load balance and optimize user session over several backend servers.

Supported Vendors: F5



▪ **NetApp FSX on AWS**

CDW's NetApp FSx on AWS service ensures seamless deployment of FSx for NetApp ONTAP, allowing your organization to scale and manage file storage in the cloud efficiently. By expertly configuring, securing and optimizing FSx for your unique environment, we pave the way for you to leverage cost-effective storage, simplified data management and enhanced application performance.

Supported Vendors: AWS and NetApp

▪ **NetApp ONTAP Rapid Deployment**

Our service includes the installation of an on-premises NetApp storage array, whether it's a new setup or a refresh of an existing system. Our team will provide remote guidance through CDW's professional services (PS) team to ensure the proper racking and cabling of the storage solution. Furthermore, CDW's PS will perform a base installation of the NetApp cluster, and provide and present capacity to hosts. CDW will also test all high availability (HA) features of the system. Mirroring and data migration services must be scoped separately.

Supported Vendors: NetApp

▪ **Network Assessments (LAN/SD-WAN/Wireless Network)**

In-depth LAN/SD-WAN/Wireless Network assessment with detailed report on pain-points, security concerns, configuration inconsistencies and recommendations.

Supported Vendors: Arista, Aruba, Cisco, Dell, Fortinet, HPe and Meraki

▪ **Nutanix NCI Cluster Rapid Deployment**

Our service includes the installation of an on-premises Nutanix NCI cluster of up to four nodes, whether it's a new setup or a refresh of an existing system. Our team will provide remote guidance through CDW's professional services to ensure the proper racking and cabling of the virtualization solution.

▪ **Nutanix NC2 on AWS**

Are you worried about rising costs in your current cloud environment? CDW's Nutanix NC2 on AWS offers a flexible, cost-effective alternative, allowing you to leverage a familiar solution trusted by infrastructure professionals for years.

▪ **Portal Deployment**

Deliver a web portal where applications are available per active directory (AD) group membership.

Supported Vendors: F5

▪ **Predictive Wireless Survey**

CDW offers a comprehensive predictive wireless survey service, designed to optimize wireless network planning and deployment efficiency. Utilizing advanced predictive modelling tools, CDW assesses the wireless environment remotely based on floor plans and building material assumptions provided by the customer.

Supported Vendors: Aruba, Cisco and Wi-Fi 6

▪ **SAN Switches Deployment**

Fabric hardware and software deployments. SAN zoning and commissioning.

Supported Vendors: Brocade and Cisco

▪ **SD-WAN Design and Deployment**

Consulting, designing and deployment of SD-WAN solutions for small to large enterprises. This includes seamless integration with the existing network and migration to the new SD-WAN network with minimum downtime.

Supported Vendors: Cisco, Fortinet, Meraki and Silver Peak

▪ **Secure Remote Desktop**

Deliver secure remote desktop access via the application portfolio management (APM) portal.

Supported Vendors: F5

▪ **Secure VDI Access**

Deliver secure VDI access via the APM Portal.

Supported Vendors: F5

▪ **Storage Assessments**

Analyze storage capacity utilization, performance, quality of service (QoS), health and generate reports with recommendations.

Supported Vendors: HPe, NetApp and Nutanix

▪ **Storage Automation (Ansible)**

Automate the complex storage tasks using Ansible Automation.

Supported Vendors: NetApp

▪ **Storage Data Migration**

Data migration from various platforms to NetApp, Nutanix, HPE, Cisco UCS and cloud.

Supported Vendors: AWS, Azure, HPe, NetApp and Nutanix

- **Storage Deployments**

Storage hardware and software cluster deployments, upgrade/downgrade, decommissioning, data protection, consolidation and virtualization.

Supported Vendors: HPE and NetApp

- **Storage Upgrade and Consolidation**

Add nodes and disk shelves to the cluster and eject the end of life (EOL) hardware.

Supported Vendors: HPE, NetApp and Nutanix

- **Virtual Desktop Solutions**

New Horizon deployments, upgrades to existing deployments and health assessments.

Supported Vendors: VMware Horizon/View

- **VMware Network Virtualization**

VMware NSX Data Centre is the network virtualization and security platform that enables the virtual cloud network, a software-defined approach to networking that extends across data centres, clouds, endpoints and more.

Supported Vendors: VMware

- **vSphere Health Assessment**

The health assessment covers the network, storage connectivity, ESXi servers and vCenter health.

Supported Vendors: VMware

- **VxRail**

Deploy new VxRail appliances, upgrade existing appliances, scale up or out of hardware.

Supported Vendors: Dell and VMware

- **WAF Protection**

Deliver WAF policy to protect applications against malicious requests.

Supported Vendors: F5

- **Wireless LAN Deployment**

Design and deployment of greenfield or brownfield Wireless LAN deployment for small to large enterprises.

Supported Vendors: Aruba, Cisco and Meraki





Data Protection

Backup Data Migration to Cloud

Moving backup data to the cloud has been the prime use case for utilizing cloud resources. More and more companies are replacing aging tape and disk storage for cloud storage. CDW can assess the customer's needs and implement a solution that best suits their requirements.

Supported Vendors: Commvault, Dell and Veeam

Backup Environment Migration to Cloud

The reduction of on-premise resources is high on most customers' priority lists. Many customers are looking at migrating the backup environment to the cloud and keeping fewer resources on-premise. CDW can assess the environment and the customers' needs to architect a solution that will utilize cloud resources to protect backup data.

Supported Vendors: Commvault, Dell and Veeam

Commvault Backup for AWS

CDW-certified consultants can implement protection for AWS workloads like EC2 and EKS, platform as a service (PaaS) databases like RDS and DocumentDB. Commvault's Live Sync can replicate from VMware and Hyper-V to AWS, from AWS to VMware and Hyper-V and Azure. CDW-certified consultants can architect and implement a solution to meet any and all needs of a customer.

Supported Vendors: AWS and Commvault

Commvault Backup for Azure

CDW-certified consultants can implement protection for Azure workloads, PaaS databases, SAP Hana on Azure and SQL utilizing Commvault. Commvault's Live Sync can replicate from VMware and Hyper-V to Azure, from Azure to VMware and Hyper-V and AWS. CDW-certified consultants can architect and implement a solution to meet any and all needs of a customer.

Supported Vendors: Azure and Commvault

Commvault Backup Software Implementation

Enhanced implementation services of Commvault backup environments using Commvault's best practices and CDW's certified implementation consultants. During Implementation, CDW will assess the requirements, architect the environment and implement the solution to meet the service-level agreement's auditory requirements and reduce data loss.

Supported Vendors: Commvault

Commvault Hyperscale Appliance

Commvault Hyperscale is Commvault's approach to a scale-out solution for backup data storage. CDW can implement these backup devices into the production data centre or in remote locations as a single storage and compute solution for any environment to meet high resiliency and performance requirements.

Supported Vendors: Commvault

Commvault Rapid Deployment

CDW's Rapid Deployment Service for Commvault offers a comprehensive solution tailored to your business needs, starting with a review of your data retention requirements and a thorough assessment of your applications, databases and infrastructure. We design a custom backup schedule and strategy, implement the approved design and verify the solution's operation through test restores.

Commvault VM Migration to Cloud

Customers need a safe method to migrate on-premise workloads to the cloud. CDW can utilize Commvault to first protect all the production workloads, then copy that data to the cloud and replicate the workloads into the Cloud platform workload. Commvault will replicate daily changes until ready for failover. When ready to cut over to the cloud, run the failover feature to shut down on-premise workloads and spin up the cloud workloads.

Supported Vendors: Commvault

Data Domain Implementation

Dell Data Domain is a highly scalable data deduplication device for backup storage and can be scaled to cloud storage using a DDVE. CDW-certified consultants can architect and implement the storage device into any backup software to meet customer requirements.

Supported Vendors: Dell

Data Protection Health Check

Securing backup environments has become a key aspect of data protection, alongside ensuring proper data backups. Compromised backup solutions and data have emerged as major challenges today. A single misconfigured setting can lead to vulnerabilities in management interfaces or expose backup data to attacks. The most effective way to tackle these challenges is by conducting a comprehensive Backup and Recovery Health Check.



▪ **Data Protection Strategy Assessment**

Modern business needs mean new requirements for your backup and disaster recovery solutions. CDW's Data Protection Strategy Assessment evaluates your current backup and disaster recovery solutions, compares your solution with top vendor solutions, and helps to identify the best solution meets your company's unique requirements.

▪ **Dell Backup for Azure**

The Dell IDPA is a single management interface to backup all types of workloads, including on-premises, Azure and AWS workloads. CDW can introduce this cost-effective appliance into the environment seamlessly to manage all their needs in the cloud to backup PaaS and IaaS workloads. CDW's certified consultants can architect and implement the solution to protect these workloads.

Supported Vendors: Dell

▪ **Dell Backup Software Implementation**

Enhanced implementation services of Dell backup environments using Dell's best practices and CDW's certified implementation consultants. During Implementation, CDW will assess the requirements, architect the environment and implement the solution to meet the service-level agreement's auditory requirements and reduce data loss.

Supported Vendors: Dell (IDPA, Avamar, Networker and PowerProtect)

▪ **Disaster Recovery Assessment Service**

Our Disaster Recovery (DR) Assessment evaluates your current recovery strategies to ensure your business is prepared for unexpected disruptions. We identify gaps, assess risks and provide actionable recommendations to improve recovery times and minimize downtime. Tailored to your specific environment, this assessment helps safeguard critical systems, ensuring business continuity with minimal impact.

▪ **DR Replication**

CDW's certified data protection consultants can implement a DR solution to meet customer needs to either a secondary location or to the cloud. Many customers have been replacing older physical DR sites with cloud DR sites to reduce costs.

Supported Vendors: Commvault, Dell and Veeam

▪ **Environment Hardware Upgrades**

Backup infrastructure hardware should be replaced when warranty terms expire to reduce maintenance costs and keep the hardware in good working condition. CDW data protection consultants can assist in decommissioning older hardware and replace with newer.

Supported Vendors: Commvault, DELL and Veeam

▪ **Environment Software Upgrades**

Backup environments should be upgraded on a regular basis with the latest security and operational enhancements. CDW's certified consultants can upgrade environments to meet customer requirements.

Supported Vendors: Commvault, Dell and Veeam

▪ **ExaGrid Implementation**

ExaGrid's tiered backup storage appliance is a highly scale-out alternative for backup storage that utilizes a landing zone for new backup data and an air-gapped long-term retention repository to protect data. ExaGrid can be used with any backup software and can be implemented by our trained CDW consultants.

Supported Vendors: ExaGrid

▪ **IDPA Implementation**

Dell IDPA is an all-in-one backup appliance delivering powerful, enterprise-grade data protection capabilities for any size environment. CDW's trained and certified consultants can implement these solutions into any environment to protect the required workloads.

Supported Vendors: DELL

▪ **Office 365 Protection**

With the Office 365 shared responsibility model, the customer is responsible for protecting their production data. CDW's certified consultants can architect and implement a solution to keep a secondary backup copy of the customer's SharePoint, Teams, OneDrive and O365 Mail data to meet the customer's auditory and retention requirements.

Supported Vendors: Commvault, DELL, Metallic and Veeam



▪ Remediation Efforts

In every environment, issues exist that might interfere with regular backup operations and can jeopardize important data protection service-level agreements and regulatory requirements. Our fully-certified consultants can assist in correcting issues within the environment.

Supported Vendors: Commvault, Dell, IBM, Veeam and Veritas

▪ Storage Level Integration (Snapshot)

Storage level snapshots can assist in reducing backup windows with the increasing sizes of backups. Backup software can manage snapshots, catalogue the backup data and copy backup data from the storage to secondary locations. CDW can implement snapshots for most of the storage vendors bringing backup times down to minutes from hours.

Supported Vendors: Commvault, Dell and Veeam

▪ Tape Library Implementation

Tape libraries are still being used in many customer environments and require replacement after warranty and maintenance periods end. CDW has vast experience using tape libraries and can implement new libraries and migrate data if required from older tape to a new tape. Our certified consultant can rack, install, upgrade and configure any backup software that the customer is utilizing today.

Supported Vendors: Dell, HP, IBM and Quantum

▪ Veeam Backup

CDW's certified consultants can implement Veeam Backup for AWS or Azure to protect workloads utilizing cloud storage. To do so, the consultant will gather information and requirements, implement the solution, test backups and restores and document the outcome of the project.

Supported Vendors: AWS, Azure and Veeam

▪ Veeam Backup and Replication Rapid Deployment

CDW's Rapid Deployment Service for Veeam Backup and Replication offers a comprehensive solution tailored to your business needs, starting with a review of your data retention requirements and a thorough assessment of your applications, databases and infrastructure. We design a custom backup schedule and strategy, implement the approved design and verify the solution's operation through test restores.

Supported Vendors: Veeam

▪ Veeam Hardened Repository - Immutability

Protecting backup storage is as important as protecting production data. A Veeam hardened repository protects Veeam backup data by creating that unchangeable and undeletable safe copy to eliminate the chances of ransomware encrypting the backup data. CDW can implement the Veeam hardened repository and add it to the backup infrastructure.

Supported Vendors: Veeam

▪ Veeam SOBR Implementation

A scale out backup repository (SOBR) consists of one or more backup repositories called a performance tier and capacity tier. CDW is seeing the uptick in implementation of Veeam SOBR to assist with growing backup data sizes and to start using object storage for longer-term data. CDW can architect and implement a SOBR to replace older configurations to meet capacity requirements on-premises and the cloud.

Supported Vendors: Veeam

▪ Veritas Backup Software Implementation

Enhanced implementation services of Veritas backup environments using Veritas's best practices and CDW's certified implementation consultants. During Implementation, CDW will assess the requirements, architect the environment and implement the solution to meet the service-level agreement's auditory requirements and reduce data loss.

Supported Vendors: Veritas (NetBackup and Backup Exec)

▪ VMware Cloud (VMC) Deployment

Installation and configuration of the following VMware applications: VMware Cloud and VMware HCX.

Supported Vendors: AWS and VMware

▪ VMware Cloud (VMC) with VCDR Deployment

Installation and configuration of VMware Cloud with VMware Cloud disaster recovery (VCDR) in the customer's environment.

Supported Vendors: AWS and VMware



Managed Infrastructure Services

Spend less time updating and maintaining systems and more time delivering business value. Get better performance and less downtime with CDW Canada's managed infrastructure services.

▪ Cisco Meraki Managed Services

At CDW Canada, we get that networking across the hybrid cloud is critical for your business to operate effectively. With Cisco Meraki Managed Services by CDW, you can rely on best-in-class IT experts to monitor, manage and update your Cisco Meraki deployments: from wireless access points to MX security appliances.

Supported Vendors: Cisco Meraki

▪ CDW Network and Internet Managed Services

CDW's Network & Internet Managed Services offers comprehensive coverage for diverse network infrastructures across Canada, with seamless management, support and monitoring for remote workers, cloud platforms, data centres and offices. This service ensures smooth deployment, connectivity and reliability for organizations while addressing key challenges in managing distributed networks all in a single agreement.

Data Protection

▪ Backup as a Service (BaaS)

CDW's Backup as a Service (BaaS) allows your business to tap into resources and tooling that will help bring awareness and a sense of comfort to the company. Your IT teams can focus on providing value in other areas and feel confident that CDW is managing your backup environment.

Supported Vendors: Commvault, Veeam, VMWare and Zerto

▪ Disaster Recovery as a Service (DRaaS)

CDW's Disaster Recover as a Service (DRaaS) allows your business to tap into resources and tooling that will help bring awareness and a sense of comfort to the company. Your IT teams can focus on providing value in other areas and feel confident that CDW is managing replication into your DR environment.

Supported Vendors: Azure, Commvault and Zerto

▪ Hosted Backup

For those organizations who currently utilize Commvault technology for their backups, CDW offers a hosted backup solution which provides a turn-key Commvault CommCell to either augment their current backup capacity or act as an offsite copy as an alternative to aging tape technology.

Supported Vendors: Commvault

▪ Managed Compute

CDW's Managed Compute: Hypervisor service allows your business to tap into resources and tooling that will help bring awareness and a sense of comfort to the company. Your IT teams can focus on providing value in other areas and feel confident that CDW is managing your hypervisor environment.

Supported Vendors: Cisco, Dell, HPE, Hypervisor, Microsoft and RedHat

▪ Managed Network Switching

Supported: Cisco, Meraki, F5

The managed network service provides the day-to-day management of networking devices for customers. CDW provides the expertise and knowledge to provide monitoring/alerting, device administration and general capacity management for systems in scope.

Supported Vendors: Aruba, Cisco, Fortinet, HPE and Meraki

▪ Managed F5

Managed F5 service allows your business to tap into resources and tooling that will help bring awareness and a sense of comfort to the business. Your IT teams can focus on providing value in other areas and feel confident that CDW is managing your F5 environment.

Supported modules: base platform plus LTM, DNS (GTM), ASM and APM



▪ **Managed SD-WAN**

Let your internal IT teams focus on business performance while CDW's experts provide the day-to-day management of your SD-WAN devices.

Supported Vendors: Cisco Meraki, Fortinet and Palo Alto

▪ **Managed Storage**

The Managed Storage service provides the day-to-day management of storage devices for customers. CDW delivers the expertise and knowledge to provide monitoring/alerting, device administration and general capacity management for storage devices.

Supported Vendors: Dell, EMC, HPE Nimble and NetApp

▪ **Monitoring as a Service**

Monitoring as a Service is a base-level monitoring for a technology (networks, servers, virtual machines, extra) that provides customer notifications. CDW operates the monitoring system infrastructure on behalf of the customer but does not investigate the underlying cause of events or alarms. CDW delivers notifications to the customer for the customer's operations teams to handle.

▪ **Server Patch Management**

In today's IT landscape, it's not unusual for system administrators to be under pressure to continuously deliver added value for the business. The reality is that systems may become vulnerable because of competing priorities. CDW can work with your administrators to provide a patching service to ensure your systems stay up to date and reduce the risk to your business.

Supported Vendors: Microsoft, Red Hat Linux and CentOS

▪ **Site Recovery Manager**

For VMware clients, CDW offers VMware Site Recovery Manager, which provides a fully integrated and automated offsite replication of the virtual infrastructure in the cloud.

Supported Vendors: VMWare





Cloud Services

The added complexities of ever-evolving public and multicloud environments make careful planning and skilled management a must. CDW helps you design and augment your cloud capabilities, build your platform to your exact specifications and manage your cloud environment efficiently, securely and transparently.

Managed Cloud Services

- Managed AWS**
 CDW simplifies cloud complexity by helping you securely adopt, integrate and manage AWS. We provide ongoing support, help you scale, keep you informed and maximize your AWS ROI to achieve business goals faster.
- Managed Azure**
 Managing dynamic cloud environments demands specialized expertise, especially for keeping critical systems online. CDW's next-gen Azure managed services, backed by 20+ years of experience, help ensure optimal operations with a trusted partner by your side.
- Managed Azure Virtual Desktop**
 We take care of everything from infrastructure management and image updates to patching and performance monitoring.

Cloud Assessments

- Cloud Technology Roadmap Prioritization (AWS/Azure)**
 The Cloud Technology Roadmap Prioritization (TRP) Workshop is a complimentary service provided by the Cloud Solutions Architect team at CDW Canada. This workshop is meticulously designed to assist organizations in aligning their technology initiatives with their overarching business vision. By doing so, it ensures strategic prioritization and accelerates the timelines for key projects, ultimately driving business success.
- Cloud Cost Optimization**
 CDW's cloud experts help you optimize your cloud costs by evaluating your organization's cloud infrastructure, usage patterns and expenditure to identify cost-saving opportunities and provide actionable recommendations, best practices and strategies to reduce unnecessary spending and maximize cost efficiency.
- LEADS Assessment (AWS)**
 CDW's Licencing Evaluation and Discovery Service (LEADS) enables businesses to assess and optimize current on-premises and cloud environments based on actual resources and utilization and third-party licencing. It has three key focus areas: identify legacy licensing savings, technical performance assessment and LEADS assessment results.

- Azure Migration Assessment**
 Conducting a cloud migration assessment is a crucial step in planning your move to the cloud. CDW's cloud experts will perform a comprehensive assessment of your on-premises servers to ensure an understanding of your current environment and help you make informed decisions for a successful migration.
- Cloud Readiness Assessment (AWS/Azure)**
 In-depth review of the technical and business factors that will impact a workload's readiness for public cloud. Provides customers with the financial and technical analysis of each workload and the recommended future state that will meet the customer's requirements.
- Database Migration Assessment (AWS/Azure)**
 Assessment of the existing data on-premises to migrate into the cloud (examples of data types will be SQL, MySQL).
- Well-Architected Framework**
 The well-architected review is a systematic approach to evaluating cloud architectures and can help you identify and fix potential issues with your environment.

Cloud Migrations

- Customer Cloud Journey**
 Canadian businesses are increasingly challenged by aging systems, renewal pressures and constrained budgets. CDW's four-phase cloud migration service is designed to help you overcome those barriers and move confidently to the cloud.
- On-Premises Virtualized Workload to AWS Native Migration**
 Migrating from on-premises hypervisors to AWS is a strategic move that offers substantial benefits, including great scalability, cost savings and access to advanced technologies. While AWS provides specialized tools and extensive capabilities to assist with your migration, a move to the AWS cloud can still be quite complex. Leveraging an AWS partner, like CDW, is helpful for migrating more efficiently and positioning your business for future growth and success in the cloud.



Cloud Modernization

- **NetApp FSX on AWS**

CDW's NetApp FSx on AWS service ensures seamless deployment of FSx for NetApp ONTAP, allowing your organization to scale and manage file storage in the cloud efficiently. By expertly configuring, securing and optimizing FSx for your unique environment, we pave the way for you to leverage cost-effective storage, simplified data management and enhanced application performance.

- **Nutanix NC2 on AWS**

Are you worried about rising costs in your current cloud environment? CDW's Nutanix NC2 on AWS offers a flexible, cost-effective alternative, allowing you to leverage a familiar solution trusted by infrastructure professionals for years.

- **Automation QuickStart (Azure)**

A simplified approach to automating a workload. Designed to focus on a pre-determined workload and leverage modern automation principles to quickly and easily set up a fully automated solution in the cloud.

- **Veeam QuickStart**

An assessment of the customer's current environment. Architect, install and configure components of the Veeam Availability Suite, including Veeam backup and recovery and Veeam One Server.

- **Cloud Disaster Recovery (DRaaS) - (AWS, Azure, Commvault)**

Deploy, adopt and integrate data protection in the public cloud securely. Scale where needed, as well as keep you informed of any changes and help you maximize the ROI on your cloud investments and achieve your business outcomes faster.

Cloud Security

- **Cloud Penetration Testing**

CDW's Cloud Penetration Testing Service is used to discover, identify and classify potential deficiencies and vulnerabilities in organizations' cloud environments; and help assess the related security posture. CDW's Cybersecurity consultants would attempt to identify and exploit vulnerabilities to simulate a malicious actor, and then provide recommendations to remediate issues.

Cloud AI

- **AI/ML Azure OpenAI Two-Day Primer**

A two-day workshop on the ins and outs of Azure Cognitive Services, Azure OpenAI Service and Azure OpenAI Studio.

- **Azure OpenAI Crash Course**

A course on Azure OpenAI services. Learn the differences between ML, AI and GenAI, see real-world applications and experience interactive prompt engineering with Azure Chat Playground.

- **Azure AI Launchpad**

CDW Canada's Azure AI Launchpad is a fast-track engagement that helps mid-sized organizations unlock the power of AI; securely, affordably and with measurable business impact. In just four to six weeks, we deliver a working AI prototype and a secure Azure AI landing zone, powered by Microsoft's Azure AI Foundry.

Cloud Virtual Desktop Infrastructure (VDI)

- **Azure Virtual Desktop**

A secure, Microsoft-native virtual desktop service that modernizes legacy VDI with simplified management, predictable costs, and a Windows 11 experience delivered from Azure.

Data and Analytics

- **Business Process Automation: Power Apps, Power Automate Flow and Azure Logic Apps**

Assess your security and compliance posture within your Microsoft 365 environment to align with Microsoft's recommended best practices. We provide a report of the current state of your tenant with a prioritized list of actionable recommendations to help you identify and fix potential security issues in your environment.

- **CDW Microsoft Fabric Services**

CDW helps you accelerate your data potential with Microsoft Fabric. Our services include the identification of high-impact use cases and a thorough assessment of your existing data ecosystem to pinpoint potential gaps and opportunities. We also evaluate architectural readiness and licencing frameworks to facilitate cost-effective solutions.

- **CDW Microsoft Data and Analytics Customer Journey**

Accelerate your data potential with Microsoft Power Bi and Fabric. Embark on a seamless, end-to-end journey with CDW Canada as you adopt or upgrade your data systems. Our multiphase process is designed for Canadian customers and guides you every step of the way from detailed assessments to tailored architecture, smooth implementation and ongoing management. We seamlessly connect each stage with a targeted approach and robust security workflows, including data residency compliance, ensuring your migration is both streamlined and fully compliant.



Modern Workspace Services

At CDW, we can help our clients leverage technology to empower their employees, serve their customers and create exceptional experiences. Our modern workspace solutions go from endpoint to workspace to productivity and collaboration.

Managed Modern Workspace Services

- **Endpoint Risk Management**
The Endpoint Management service for desktops, laptops and mobile devices provides daily management of the operating system, applications and connectivity through standard ITIL processes.
Supported Vendors: Microsoft Intune, Jamf and Tanium
- **Managed Backup for M365**
CDW's Managed Microsoft 365 Backup Service protects M365 workloads like Exchange, SharePoint, OneDrive and Teams. Using Veeam's technology, this service offers automated backups, long-term retention, rapid recovery and regulatory compliance.
- **CDW Service Desk**
CDW Service Desk offers a scalable, single point of contact for all your IT support needs, delivered by experienced and certified professionals.
- **Managed HP Workforce Experience Platform (WXP)**
At CDW, we're committed to supporting you at every stage of your HP Workforce Experience Platform (WXP) journey. From initial consultation to seamless onboarding, device integration and ongoing technical support, our team of experts ensures your transition to HP WXP is smooth and impactful.

Productivity

- **Tenant Migration**
Mergers and acquisitions (M&A) involving Microsoft 365 require intricate planning, skilled technological acumen, great migration tools and proven experience. We have all of those plus a unique set of software tools found nowhere else.
- **M365 Assessment**
The M365 Assessment provides a comprehensive evaluation of your organization's advanced Microsoft 365 (M365) services and security features.
- **Exchange On-Prem Assessment**
CDW's assessment will review and analyze your local Exchange server environment, providing a report with findings and actionable best practice recommendations.

- **Teams Deployment**
Migrate files from your network file server to SharePoint Online and OneDrive for Business to access them securely from any device with an internet connection, without needing a VPN.

Endpoint Management

- **Windows 11 Proof of Concept**
Windows 11 offers new features to enhance security, mobility, and productivity. A Proof of Concept (PoC) helps evaluate your environment's readiness and deploy Windows 11 with minimal business impact.
- **Copilot+ PC Proof of Concept**
The Copilot+ PC Proof of Concept (PoC) demonstrates how AI can be safely introduced in Windows with commercial data protection and shows how easily Copilot+ PCs can integrate with your existing Windows 11 Pro deployment and management.
- **Intune Assessment**
The Intune and Autopilot Assessment evaluates your endpoint management strategy with Microsoft Intune and Windows Autopilot. It tackles challenges like inconsistent device management, security vulnerabilities and inefficient provisioning by reviewing configurations, deployment strategies and BYOD policies to align with industry best practices.
- **Intune Suite Pilot**
Our Pilot for Microsoft Intune Suite tackles efficient device management by leveraging a comprehensive suite of tools to streamline operations, enhance security and boost productivity. This service delivers improved endpoint management, better security compliance and increased operational efficiency.
- **Intune Implementation**
CDW's Microsoft Intune Implementation service delivers a tailored solution for deploying Microsoft Intune. Designed to enhance device and application security, improve productivity and reduce IT costs, this service leverages CDW's expert guidance to ensure a smooth implementation.



- **Apple Readiness Assessment**

During the engagement, we will cover high-level topics such as procurement, connectivity, device posture, productivity and technology lifecycle. A quick questionnaire will be filled out by the client to show the current state and desired outcomes.

- **Apple Health Check**

During the Apple Health Check engagement, we will cover high-level topics such as procurement, connectivity, device posture, productivity and technology lifecycle.

- **Apple Device Optimization**

CDW will conduct a thorough evaluation and enhancement of the customer's current mobile device management (MDM) environment specifically for their Apple devices. This tune-up will be performed in accordance with the recommendations provided in the Apple health check, which is a requirement for this engagement.

- **Apple Mac Deployment Consultation**

CDW's Mac Deployment Consultation is a complimentary service designed to help organizations seamlessly integrate Mac devices into their environment. In just 60 minutes, our Apple-certified experts review your current setup, identify roadblocks and provide actionable recommendations on deployment, security and management.

- **Apple Mobile Device Management (MDM) Fast Track Implementation**

CDW will work with your team to implement the preferred mobile device management (MDM) system, such as Jamf Pro, Jamf School or Intune, for managing MacBooks, iOS and iPadOS devices. The focus is on completing Automated Device Enrollment, app deployment and configuration setup following Apple best practices, ensuring devices are supervised and integrated with your Entra environment per Microsoft and Apple guidelines.

- **Jamf Pro Implementation**

As part of this engagement, CDW will guide your organization through the setup and configuration of Jamf Pro and ensure successful device enrollment. This service is designed to introduce modern device management practices by establishing streamlined, best practice baselines for key mobile device management (MDM) components.

- **Jamf Apple Device Management**

An IT management solution for organizations that use Apple devices. This solution delivers the functionality required in today's modern work environme

- **Installation, Setup and AMT Activation for Intel vPro's EMA**

CDW's team of experts can help you deploy Intel's Endpoint Management Assistant (EMA) tool and leverage Active Management Technology (AMT), providing you with a streamlined and efficient solution that enhances the overall user experience.

Lifecycle Services

- **Design Thinking Strategy Workshop**

Our design thinking sessions are a strategic opportunity for executive teams to reimagine how technology can elevate and drive sustainable business value.

These sessions go beyond traditional planning – they are collaborative, insight-driven engagements that align leadership around a shared vision. By applying design thinking principles, we focus on understanding customer needs, framing the right challenges and co-creating practical, future-ready solutions.

- **Endpoint Lifecycle Services**

CDW's endpoint experts can help you optimize each stage of your device lifecycle. From the moment you create a procurement strategy to the end of the life of your devices, CDW is ideally positioned to take your endpoint journey to the next level.

- **Smart Hands**

CDW Smart Hands Services minimize downtime by rapidly deploying and managing hardware and software, utilizing local experts to support your IT staff. This allows you to concentrate on running your business efficiently, confident that your critical infrastructure is well-managed.

Collaboration

- **Microsoft Teams Phone**

AI investments in Teams Phone enhance productivity with better clarity, fewer interruptions and a smoother calling experience. Copilot in Microsoft Teams Phone adds intelligent features, helping you stay focused and making calls more effective and actionable.

GenAI

- **Copilot Technical Readiness**

The Copilot Technical Readiness is a one-day targeted workshop designed to rapidly assist technology and security wardens with readying the customer environment either as a precursor or as part of an initial deployment of M365 Copilot.

- **M365 Copilot Kickstarter**

The M365 Copilot Kickstarter is a five-phase engagement designed to help customers understand the value of AI reinvention, identify top functional scenarios, build a business case and develop a strategic implementation roadmap for AI transformation powered by Microsoft 365 Copilot.

- **Copilot End-User Skilling**

This workshop serves as an introduction to understanding Copilot's capabilities, including its integration with Microsoft Graph and adherence to security and compliance standards.

- **Copilot+ Power Services**

As AI adoption accelerates across Canadian workplaces, CDW's AccelerateAI Services are designed to help organizations harness the full potential of Microsoft 365 Copilot and Power Platform – while addressing the real-world challenges of governance, education and scale.





Security Services

CDW Canada's Security Services provide independent evaluations of your security posture and help you fortify your weaknesses. Our certified experts design comprehensive strategies and solutions for protection and response.

Professional Security Services

You can rely on our team of experts to implement and review your professional security services. We also have authorized training centres to help your internal team make the most of your security technologies.

[\[Explore Managed Security Services\]](#)

Endpoint (AV, EDR, XDR)

- **Endpoint Health Check**

Review current endpoint technology design and implementation and provide guidance on improvements that can be made.

Supported Vendors: CrowdStrike, Cylance, Microsoft and Palo Alto

- **Endpoint Migration/Implementation**

New deployment: deployment is from the ground up, no existing endpoint technology is being used. Migration: customer has deemed endpoint technology ineffective or costly to maintain effectively, CDW to remove and install better-suited technology for the customer.

Supported Vendors: CrowdStrike, Cylance, Microsoft and Palo Alto

Identity and Access Management

- **Cisco User Protection Suite Services**

CDW provides deployment for the Cisco User Protection Suite. Our Cisco-certified experts guarantee seamless integration, optimal configuration and accelerated time-to-value for your Cisco products.

- **IAM/SSO/Migration/Implementation**

Customers looking to implement identity management with no current solution in place. Integrating lightweight directory access protocol (LDAP)/active directory (AD) and integrating single sign-on (SSO) into corporate applications.

Customers looking to replace their identity management with an IAM solution currently in place. Porting an already existing LDAP/AD and SSO configuration to better technology and improving the architecture.

Supported Vendors: Centrify, Microsoft and Okta

- **IAM/SSO Health Check**

Review current SSO/IAM implementation and provide a report to show possible areas of improvement.

Supported Vendors: Centrify, Microsoft and Okta





Network Security

■ Cisco Security Assessments

Cisco's security assessments involve an expert member of CDW's solutions team connecting with you for an interview-based gap analysis. Following this discussion, you will be provided with a findings report that includes high-level gaps, risks and vulnerabilities as well as next steps for your business.

Supported Vendors: Fortinet and Palo Alto Networks

■ Cisco Security Suites Services

CDW provides deployment for your Cisco security suites: Breach Protection and Cloud Protection. Our Cisco-certified experts guarantee seamless integration, optimal configuration and accelerated time-to-value for your Cisco products.

■ Next-Generation Firewall (NGFW) Rapid Deployment Services

Rapid deployment for implementing a greenfield NGFW solution or rapid deployment for like-for-like migration between vendor firewall platforms.

Supported Vendors: Fortinet and Palo Alto Networks

■ Next-Generation Firewall (NGFW) Health Check

In-depth review of NGFW firewall throughput, architecture, design and availability to ensure stable operation.

Supported Vendors: Cisco, Fortinet, Palo Alto Networks and SonicWall (partner supported)

■ Next-Generation Firewall (NGFW) Implementation Services

Design and implementation of a greenfield NGFW firewall solution or a like-for-like migration between vendor firewall platforms

Supported Vendors: Cisco, Fortinet and Palo Alto Networks

■ SD-WAN Implementation

Discovery, design and implementation of a software-defined area network (SD-WAN) solution, starting by gathering customer requirements, identifying current infrastructure and building out an SD-WAN solution. Followed by a staged migration of production services.

Supported Vendors: Cisco, Fortinet and Palo Alto Networks

■ SASE Rapid Deployment Service

Rapid deployment for implementation of a greenfield secure access services edge (SASE) solution.

Supported Vendors: Cisco, Fortinet and Palo Alto Networks

■ Fortinet Migration

CDW's Fortinet FortiGate Migration service allows you to migrate from your existing NGFW solution to a Fortinet NGFW solution (either FGT 30-90 or FGT 100-900).

■ FortiGate Rapid Deployment Services

Rapid deployment for implementing a greenfield NGFW firewall solution or rapid deployment for like-for-like migration between vendor firewall platforms.

Supported Vendors: Fortinet

■ Palo Alto Networks NGFW Refresh Service

Rapid deployment for implementing a greenfield NGFW firewall solution or rapid deployment for like-for-like migration between vendor firewall platforms. This service is a value-focused alternative to vendor-provided quickstart services.

Supported Vendors: Palo Alto Networks

■ PAN-OS Upgrade Service

Downtime caused by upgrades is costly to your business. Our team has the expertise and experience to assist you in planning and patching your critical Palo Alto Networks infrastructure to avoid downtime and confirm your upgrades take place as seamlessly as possible.

Supported Vendors: Palo Alto Networks

■ SASE Implementation

Discovery, design and implementation of a secure access services edge (SASE) solution, starting by gathering customer requirements, identifying current infrastructure and building out a SASE framework. Followed by a staged migration of production services.

Supported Vendors: Palo Alto Networks

SIEM & Analytics

- **SIEM Health Check**

Review of an existing platform to ensure that it is configured for optimal performance and contains the right log sources and content to support appropriate security monitoring.

Supported Vendors: LogRhythm and Splunk

- **SIEM Migration/Implementation**

The design and implementation of a SIEM solution from the ground up, including software installation and configuration, log source integration, as well as the implementation of alerts/use cases, reports and dashboards, based on the customer's requirements.

In the case of migrations, we work closely with the customer to understand what needs to be moved over from the existing solution and what can be deprecated.

Supported Vendors: LogRhythm and Splunk

- **SIEM Upgrade**

System review and operational health check of an existing platform, followed by planning and executing a platform upgrade.

Depending on how dated the platform is, multiple upgrades may be required, as well as a review of the memory/compute/storage requirements for the latest software versions.

Supported Vendors: LogRhythm and Splunk





Microsoft Security

- **Entra ID Rapid Deployment**

Microsoft Entra is a suite of cloud-based identity solutions that provide a host of identity and access management capabilities. Azure AD, a core Microsoft Entra solution, provides identity as a service features and capabilities, including cloud unified identity management, single sign-on, conditional access, identity protection and identity lifecycle management. This rapid deployment, optimized for small to medium-sized businesses, enables customers to quickly realize value from their investment in Azure AD.

- **Advanced Entra ID Deployment**

This service expands upon the Rapid Deployment service offering to include the configuration of advanced conditional access policies, application provisioning, app proxy deployment and remote on-premise application provisioning.

- **Microsoft 365 Defender XDR Rapid Deployment**

Microsoft 365 Defender is an XDR solution that natively coordinates detection, prevention, investigation and response across endpoints, identities, emails and applications. This rapid deployment, optimized for small to medium-sized businesses, enables customers to realize value from their investment in Microsoft 365 security.

- **Advanced M365 Defender Deployment**

Like the quickstart service, this service will provide basic setup and configuration services for Defender for Endpoint, Defender for Identity and Defender for O365. It will also include configuring advanced features such as custom detection rules, custom alert policies, web content filtering, phishing simulations and SIEM integration.

- **Microsoft Purview Data Loss Rapid Deployment**

Microsoft Purview is an advanced data governance, risk and compliance platform that allows organizations to govern, protect and manage their data. With Microsoft Purview's data loss prevention capabilities, organizations can define sensitive information patterns and detect those patterns within the information to protect against unintentional or accidental sharing of sensitive information. This rapid deployment, optimized for small to medium-sized businesses, enables customers to quickly realize value from their investment in Microsoft Purview Data Loss Prevention.

- **Data Discovery and Classification Deployment**

Microsoft Purview Information Protection is a set of capabilities that can be leveraged to discover, classify and apply protection to sensitive. This service will include the configuration of sensitivity labels, custom sensitive information types, sensitivity label policies and the deployment of on-premise scanners.

- **Advanced Data Loss Prevention Deployment**

This service will expand on the quickstart service offering to include the configuration of custom sensitive information types, advanced DLP policies, custom DLP policy conditions and the deployment of on-premise scanners.

- **Sentinel Rapid Deployment**

Microsoft Sentinel is an advanced security analytics, threat intelligence, threat hunting and automation platform that allows organizations to correlate threat signals from multiple sources to increase attack detection, increase threat visibility and accelerate incident response. This rapid deployment, optimized for small to medium-sized businesses, enables customers to quickly realize value from their investment in Microsoft Sentinel.

Managed Security Services

Many Canadian organizations are not confident in their ability to detect and respond to a cybersecurity breach. A lack of in-house expertise and an insufficient number of skilled personnel are two of the top reasons respondents cited as to why organizations cannot effectively manage their security posture. CDW's managed security services allow you to leverage our highly specialized skills, technology and expertise, directly matched to your business need, all for a predictable monthly cost.

- **Managed Detection and Response (MDR)**

Our MDR service enables advanced threat detection through automated correlation of events across network, cloud and endpoint solutions, delivering faster qualification, response and containment of threats.

This service provides 24/7/365 threat monitoring, investigation and remediation, change and configuration management and monthly service reporting. Simplifying threat detection, correlation and response into one complete solution.

Supported Vendors: Microsoft Defender, Microsoft Sentinel, PAN Cortex, CrowdStrike Falcon and Cisco Splunk

- **Managed NGFW (Next-Generation Firewall)**

Growth in cloud-based services and infrastructure means organizations are finding it harder to manage technology complexity. CDW will help you adopt and integrate NGFW securely, provide ongoing support, or we can manage the environment for you. CDW can help you scale where needed, as well as keep you informed of any changes and help you maximize the ROI on your NGFW investments and achieve your business outcomes faster.

Supported Vendors: Cisco, Fortinet and Palo Alto

- **Managed Palo Alto Network Services**

Having Palo Alto Network solutions continuously monitored for service availability and performance is easier with CDW's managed services. Our services are managed by certified experts to deliver in-depth analysis and response.

Supported Vendors: Palo Alto

- **Managed SASE**

Managing SASE in-house requires significant investment in specialized expertise, infrastructure and ongoing maintenance. Our service reduces operational burden, provides expert support and ensures continuous access to the latest security innovations. Our Managed SASE service provides a comprehensive, cloud-delivered security solution that integrates all elements into a single, unified platform.

Supported Vendors: Fortinet and Palo Alto (Prisma Access)

- **Managed Secure Service Edge**

Our Managed Secure Service Edge service based on zero trust offers seamless, secure access from any device to any location. CDW analysts will simplify operations through centralized policy creation and aggregated reporting, which improves threat detection and remediation.

Supported Vendors: Cisco



- **Managed SD-WAN (Prisma SD-WAN)**

The Prisma SD-WAN solution is a cloud-first solution that eliminates the costs of expensive multiprotocol label switching (MPLS) network solutions, improves end-user experience and provides scalability to modernize network performance and security.

Supported Vendors: Palo Alto Networks

- **Managed SIEM**

This service helps you improve your organization's overall security posture by quickly identifying cyberthreats across your network and cloud environments, providing your team with the right response strategy to defend against these threats.

Supported Vendors: Splunk

- **Managed SIEM as a Service**

Improve overall security posture by quickly identifying cyber threats across the network and cloud environments, providing customers with the correct response strategy to defend against these threats. SIEM as a service provides customers with an enterprise-wide view of security across their environment by leveraging industry-leading tools. Security threats correlated into a single pane of glass view into the security ecosystem.

Supported Vendors: Log Rhythm

- **Managed Compromised Credentials Monitoring**

This managed service focuses on monitoring the deep and dark web for indicators of user credentials that might have been stolen or leaked, extending your level of observability into areas that are typically hidden, giving you the peace of mind that your credentials are being actively monitored, personal and sensitive information is secured, and you can respond promptly in case a compromised credential is identified.





Risk Advisory Services

CDW's senior consultants can help you detect your organization's vulnerabilities, create a plan to minimize cyber risk and guide your company on how to comply with government privacy legislation.

Governance Risk and Compliance

AI Governance Framework Implementation

Empower your organization to harness artificial intelligence (AI) responsibly and confidently. Our AI Governance Framework Implementation service is designed to help you move from fragmented AI adoption to disciplined, defensible governance aligned with internationally recognized standards. Our experts will work with you to define clear guidelines for ethical AI use, risk management and compliance, to ensure your organization can innovate securely and maintain stakeholder trust.

Business Impact Assessment

A business impact assessment (BIA) is intended to analyze the impact on the business if key processes and functions are disrupted. The assessment will focus on identifying critical processes within each line of business, assessing the impact of disruption to those processes and identifying resource requirements for each line of business.

The purpose of this engagement is to assist the customer organization in prioritizing the recovery of business services by establishing recovery objectives for each line of business and its associated processes.

Gap Assessment

Gap assessments provide clients with a comparison and analysis of the technical, physical and administrative controls that make up their security or privacy program against a specific industry standard. Cyber Risk is capable of performing gap assessments against a variety of industry security and privacy standards. Below are some examples of the most common standards used to perform gap assessments.

Security Frameworks: CIS Top 20 (Formerly SANS TOP 20), ISO 27001, ISO 27017, ISO 27018 and NIST CSF

Holistic Security Assessment

A holistic security assessment combines a threat risk assessment with penetration testing to provide a holistic understanding of an organization's security posture. Unlike these standalone services, the holistic security assessment includes an integrated report, leveraging the insights from both assessments to provide additional context.

Internal Audit

Internal audits are conducted to prepare clients for external certification audits. Internal audits facilitate the maintenance of certifications against standards such as ISO 27001, ISO 27017, ISO 27018 and NIST CSF. The intent of the engagement is to perform a third-party internal audit of the client's security program to identify any non-conformance against the standard and provide recommendations for remediation.

Security Frameworks: CIS Controls, ISO 27001, ISO 27017, ISO 27018 and NIST CSF

PCI DSS Initial Assessment

An initial PCI compliance assessment is intended to help organizations understand their PCI DSS-related compliance requirements and establish a remediation roadmap for compliance.

Security Frameworks: PCI DSS

Privacy Impact Assessment

Privacy impact assessments (PIA) are performed to ensure privacy risks are addressed in a client's information handling practices. The objective of this assessment is to identify, assess and prioritize deficiencies in current privacy practices against the client's privacy obligations to determine compliance with required and addressable regulatory requirements and associated risks with gaps in compliance.

Security Frameworks: PIPEDA, HIPAA and GDPR



▪ Risk Assessment

Risk assessments are performed to assist clients in understanding security threats, vulnerabilities and associated risks that may affect confidentiality, integrity, and availability of client data, supporting infrastructure/systems and critical applications. Risk assessments include a gap assessment against industry security standards to identify vulnerabilities in the client's environment. The risk assessment focuses on people, processes and technologies that interact with the client's sensitive information.

Security Frameworks: CIS Controls, ISO 27001, ISO 27017, ISO 27018 and NIST CSF

▪ Security Incident Response Planning

The security incident response development service assists in enhancing your ability to manage real-world incidents effectively. CDW collaborates with you to create a tailored security incident response plan, detailing steps for identification, prioritization, containment, eradication, recovery and post-incident lessons learned, along with a comprehensive ransomware runbook.

▪ Security Incident Response Tabletop Exercise

The security incident response development service assists in enhancing your ability to manage real-world incidents effectively. CDW collaborates with you to create a tailored security incident response plan, detailing steps for identification, prioritization, containment, eradication, recovery and post-incident lessons learned, along with a comprehensive ransomware runbook.

▪ Small Business Security Assessment

The Small Business Security Assessment will use the CIS Controls for Implementation Group 1 (IG1) to pinpoint the primary risks within your organization. Furthermore, CDW's consultants will leverage their vast experience to highlight any additional issues discovered during the assessment.

▪ Third-party Certification Readiness

It provides guidance on the adoption of the ISO framework, identifies gaps in coverage, determines compliance and implements missing controls. This can be a helpful first step towards adoption and eventually ISO 27001 certification.

Security Frameworks: CIS Controls, ISO 27001, ISO 27017, ISO 27018 and NIST CSF

▪ Threat Risk Assessment

Threat risk assessments (TRA) are performed to provide additional threat analysis context that a standard-based risk assessment does not. In addition to what is covered in a risk assessment, a TRA will also provide additional context related to various threat vectors that might affect the target organization.

Security Frameworks: CIS Controls, ISO 27001, ISO 27017, ISO 27018 and NIST CSF

▪ Security/Privacy Program Certification Preparation

Security/Privacy Program Certification Preparation aids clients in certifying their program against an industry standard. Certification preparation includes a gap and risk assessment to determine additional controls that need to be implemented and identify risks to the organization; program implementation; an internal audit to ensure controls are aligned with the standard; and external audit management and support. Below are some examples of the most common standards used

Security Frameworks: CIS Controls, ISO 27001, ISO 27017, ISO 27018 and NIST CSF

▪ Security/Privacy Program Implementation

Security/Privacy program implementation includes the customization of technical, administrative and physical controls to protect a client's sensitive information and privacy. The services include implementation of policies, procedures, and forms; establishment of a governance committee; information security awareness training; risk management and program metrics. Program implementation often uses an industry security standard as a baseline for implementation; below are some examples of the most common standards used.

Security Frameworks: CIS Controls, ISO 27001, ISO 27017, ISO 27018 and NIST CSF

▪ Security/Privacy Program Maintenance Retainer

The Security/Privacy Program Maintenance Retainer service is geared toward clients that have achieved certification against an industry standard and require ongoing support for the maintenance of certification. Activities included in the program maintenance retainer include, but are not limited to: annual risk assessment, annual internal audit, external audit management, governance committee meetings and ad hoc security/privacy consultation.

▪ Security Health Check

CDW's security health check will assess your organization's security program to assist you in understanding your security posture and identify where any major vulnerabilities exist in your environment that malicious actors could exploit. This cost-effective solution will help you establish a plan to address the five most critical risks to your environment, providing tailored recommendations that are relevant to your business and preparing you for a path of continuous security maturity development while you grow your business.

▪ Virtual CISO

The virtual chief information security officer (vCISO) service is an on-demand program that meets the unique needs of a client to support their security governance, risk and compliance functions. This program facilitates sharing the knowledge and experience of outsourced corporate security, compliance and internal audit department, while not incurring the full financial burden. The CDW Cyber Risk group acts as a trusted advisor to build and maintain the client's information security and risk posture.



Penetration Testing

Penetration testing isn't a checkbox; it's how you uncover real world weaknesses across networks, systems, web and mobile applications and other critical assets before adversaries exploit them.

Get professional grade assessments tailored to your environment and scale. Our ethical hackers simulate real attacks, expose the issues that matter and deliver clear remediation guidance all backed by an intuitive customer portal with detailed reporting that keeps your team informed end to end.

- **Core Penetration Test**

Protect your business before attackers find the gaps. Get professional-level security assessments without the enterprise-level costs. CDW empowers organizations of any size to uncover and close security gaps across your entire network, inside and out. Our ethical hackers simulate real-world attacks to expose weaknesses, deliver clear remediation guidance and help you strengthen your overall security posture all through an intuitive customer portal with detailed reporting that keeps you informed every step of the way.

- **Penetration Testing as a Service (PTaaS)**

Annual penetration tests are no longer sufficient. In today's fast-paced digital landscape, waiting a year between tests leaves your environment vulnerable. Attackers don't wait, and neither should you.

With CDW Penetration Testing as a Service (PTaaS), you get cutting-edge security testing on a bi-weekly, monthly or quarterly basis, ensuring real-time findings. Experience prioritized, actionable guidance through our user-friendly portal, not just scanner outputs. This means faster issue resolution and smoother audits, keeping your business secure and compliant.

- **AI Penetration Testing**

When you deploy AI systems like chatbots and large language models, you face unique security challenges such as adversarial attacks, data leakage, model manipulation and compliance risks. CDW's AI Penetration Testing Service provides a specialized cybersecurity assessment designed to evaluate and strengthen the security posture of these advanced systems. Our value proposition is to help you proactively identify vulnerabilities, mitigate risks and ensure regulatory compliance, leveraging deep expertise in both traditional and AI-specific security domains.

- **API Penetration Testing**

A penetration test focused on identifying vulnerabilities in API endpoints and protocols that could be exploited to negatively impact the confidentiality, integrity and availability of associated data.

- **Cloud Penetration Testing**

CDW's Cloud Penetration Testing Service is used to discover, identify and classify potential deficiencies and vulnerabilities in organizations' cloud environments; and help assess the related security posture. CDW's Cybersecurity consultants would attempt to identify and exploit vulnerabilities to simulate a malicious actor, and then provide recommendations to remediate issues.

- **Email Social Engineering**

Email phishing, a type of social engineering, is a common tactic utilized by threat actors when targeting an organization to gain sensitive information or network access. Email social engineering campaigns assess an organization's employee security awareness of these types of attacks by measuring link click rate, malicious attachment execution or the submission of user credentials on a compromised login portal.

- **Full Knowledge Application Testing**

Full knowledge testing of a software application to discover, identify and classify any potential deficiencies in the application source code, infrastructure and integrations with external systems. The testing includes analysis of source code in the attempts to exploit any discovered vulnerabilities with the goal of assessing its security posture.

- **Mobile Application Penetration Testing**

A penetration test that simulates an attack against a mobile application to identify client-side vulnerabilities including, but not limited to, insecure data storage, build misconfigurations and insufficient reverse engineering security controls.

- **Network Penetration Test (Internal or External)**

An external penetration test encompasses a scan of an organization's external-facing infrastructure to identify vulnerabilities, manually verify issues and exploit them to demonstrate what could be accomplished by a threat actor.

An internal penetration test demonstrates what an external attacker could accomplish after they have breached an organization's perimeter. Internal network penetration testing includes scanning, validation and exploitation of discovered vulnerabilities, as well as manually probing the network for additional attack vectors not typically identified with automated scanners.

- **Network Vulnerability Assessment (Internal or External)**

A vulnerability assessment utilizes automated tools and manual techniques to identify and validate vulnerabilities within internal or external network infrastructure.

- **OSINT Assessment**

Open-source intelligence (OSINT) is a form of intelligence collection that involves finding, selecting, and acquiring information from publicly available sources and analyzing it to produce actionable intelligence. Intelligence gathering is performed to determine entry points into an organization, be it physical or electronic, in order to highlight what information the organization makes public and how it can be used by a determined attacker.



- **Phone Social Engineering**

Phone-based social engineering, or vishing, is a tactic used by threat actors to attempt to gain sensitive information or persuade a user to perform an action that could lead to a security breach via text messaging or phone calls. Phone social engineering engagements assess employee security awareness against voice or text-based attacks which could put the organization at risk.

- **Physical Social Engineering**

On-site social engineering is used to assess the physical and environmental security controls of a site as well as security protocols, such as confirming the identities of staff and visitors, preventing unauthorized access, etc. Sometimes, physical social engineering is also paired with penetration testing services such as dropping malicious USB keys and attacking targets if they are plugged into a device on the target network.

- **Red Team Assessment**

An assessment recommended for organizations with a mature security practice; red team engagements focus on testing an organization's detection and response capabilities to real-world attack scenarios. These longer-running assessments emulate a dedicated threat actor attempting to gain a foothold within an organization by means of exploiting technical vulnerabilities or using various types of social engineering in order to achieve a pre-determined goal while remaining undetected on the network.

- **Scenario-Based Penetration Testing**

A penetration test focused on a specific scenario and objective (i.e., emulating a threat actor that has compromised an internal workstation). Typically time-based, this penetration test aims to identify vulnerabilities and deficiencies that would be exploited by real-world threat actors in a given scenario and is not meant to be a comprehensive assessment of the entire network infrastructure.

- **Web Application Penetration Testing**

Web application penetration testing is performed to identify and exploit vulnerabilities in the web application and its components using manual and automated techniques.

Vulnerability Management

CDW's Managed Service provides continual visibility and meaningful security insight into client environments and the risk associated with vulnerabilities. This empowers the customer to manage their attack surface by identifying vulnerabilities as well as prioritizing and validating their remediation.

CDW's Professional Service helps clients evaluate their current vulnerability management program and tools, identify opportunities for improvement, develop strong processes and policies to seamlessly manage their program.

- **Tanium Cloud Rapid Deployment**

CDW's Tanium rapid deployment solution, tailored for small to medium-sized businesses, will help with deploying and configuring the cloud-based solution that aligns with your organization's security requirements.

- **Tenable VM Rapid Deployment**

CDW's skilled consultants will help you get started with the Tenable Vulnerability Management (Tenable.VM) platform by helping you to install and configure the platform according to vendor best practices to meet your organization's needs.



Digital Transformation Services

IT service management and digital workflow platforms are rapidly becoming a cornerstone of modern IT. Organizations are leveraging these solutions to optimize operations, improve efficiency and deliver seamless experiences across their business.

ServiceNow Assessment & Advisory

- **Maturity Assessment and Roadmap**

This assessment helps identify process design, governance and performance management gaps as preparation for the implementation of ServiceNow.

- **SmartScan**

With SmartScan, CDW will review the customers ServiceNow instance health against global benchmarks in addition to establishing focus areas and ownership, identifying key initiatives as themes and path for platform success, and providing a recommendations report with summary of findings.

ServiceNow Project Services

- **IT Service Management (ITSM)**

The ITSM module automates IT service delivery, consolidating tools, and legacy systems to provide a unified platform for managing IT services.

- **IT Operations Management (ITOM)**

ITOM ensures business agility by providing visibility, controlling IT operations, automating routine tasks and ensuring continuous service delivery.

- **IT Asset Management (ITAM)**

Provides comprehensive tracking and management of organizational assets, ensuring optimal utilization and minimizing redundancies.

- **Strategic Portfolio Management (SPM)**

Strategic Portfolio Management (SPM) is a solution that helps organizations align strategy with day-to-day work, enabling them to drive business outcomes by managing strategic and operational work from one place, prioritizing initiatives and building roadmaps to guide investments.

CDW Smart Services -ServiceNow-as-a-Service (SNaas)

- **Subscribed Services Platform - SmartITSM**

A CDW-owned and managed instance of ServiceNow which is domain separated for customers, branded to them and with basic administration capabilities such as user and configuration item management, knowledge management etc. With pre-built workflows based on OOTB features and functions customers can be up and running in as little as two weeks.

- **SmartTeam**

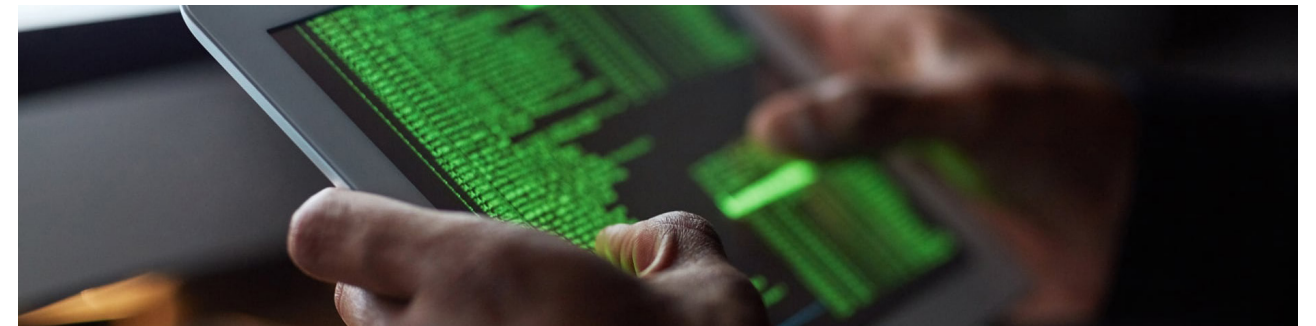
Helps customers establish a robust continuous improvement program. Customers can purchase a block of hours for scheduled and guided access to specialized resources and apply these to any manner of task in their ServiceNow instance.

- **SmartCSA**

CDW's Customer Success Advisor (CSA) helps you get the most out of your ServiceNow investment and oversees the delivery of services.

- **SmartAdmin**

A scoped managed service designed to meet the needs of customers who already have or will soon have their own ServiceNow instance and want to offload the day-to-day administration and housekeeping to a partner with deep and wide ServiceNow expertise.



Media & Entertainment

CDW is the leading Canadian software solution provider for the media and entertainment (M&E) industry. We serve thousands of clients, ranging from freelancers and start-ups to some of the largest studios in the industry. Our M&E experts work hand in hand with our infrastructure, cloud and security teams to provide you with the best-in-class offerings that will keep your projects on time, secure and on budget.

- **Media and Entertainment IT Solutions**

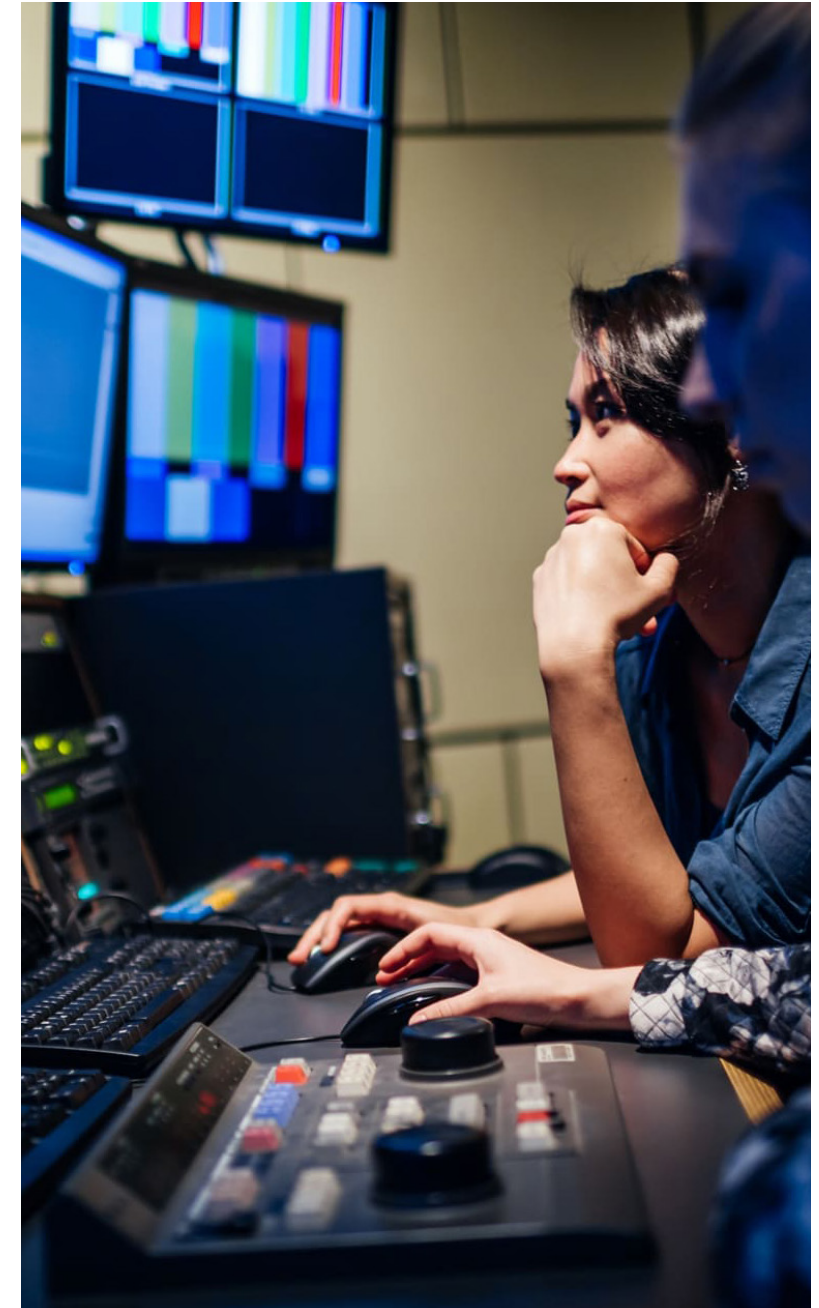
These services include StudioCloud, a community cloud for the digital media industry, offering on-demand computing to studios. The predictable, per-use cost model of StudioCloud allows studios to save money, time and assets by matching the availability of IT resources with the project demands and timetables.

Supported Vendors: Autodesk, Dell, EMC and Intel

- **StudioCloud**

We've levelled the playing field and created StudioCloud Powered by Intel, a completely secure, fully-managed, infinitely scalable solution customized to you. Select the number of nodes and the term length you need based on the project at hand. Best of all, we offer an MPAA-audited environment for studios of any size. Plus, our facilities offer a fully-managed service with 24/7/365 monitoring and support from StudioCloud engineers backed by our own network and security operations centre.

Supported Vendors: Autodesk and Intel





Strategic IT Staffing Services

CDW offers a wide mix of IT staffing services. Today we help our clients find skilled talent across the country using the same team that we use to staff our internal projects. As the landscape to find IT talent becomes ever more competitive, CDW gives you access to a deep network of proven technical consultants. We're here to support your business by supplementing full-time staff or providing specialized technical skills for your long-term or project-based needs.

