



Smarter
technology
for all

Lenovo

Take your business farther with **smarter** technology solutions

Lenovo Solutions for Small Business

 **Windows 11**

Lenovo recommends
Windows 11 Pro for Business.



The right technology makes all the difference

For today's small businesses, there's no shortage of big challenges — from uncertain market conditions and changing competitive landscapes to the constant need to attract and retain top talent.

And no matter what business you're in, having the right technology solutions in place is critical to achieving your goals and capitalizing on new opportunities.

More than half of small and mid-sized businesses:



But knowing what to choose, how to implement, and when to introduce new technology is challenging. You need a trusted partner to help navigate these decisions and deliver the value of your technology investments.

You need technology that just works — technology that enables you to focus on what you do best, get more done, and grow your business.

In the following pages, you'll find technology options curated from the industry's broadest portfolio of solutions — hardware, software, and services — customized to support growth for your business today and tomorrow.

Prepare your workforce for maximum efficiency, no matter where they're working

Small business happens everywhere. Depending on the type of work you're doing, you can have employees onsite in an office, hybrid workers moving between home and office, or employees who are entirely remote. Or you may have any combination thereof.

What matters is ensuring everyone has the right tools and support to work the way they want.



Versatile efficiency for hybrid workers

For a workforce that spends time in the office and time working remotely, you need versatile, portable devices that seamlessly connect from anywhere.

Efficiency redefined

Power through the most demanding work with all-day battery life and rapid charge technology.

Engineered for durability

The tough aluminum chassis is designed to withstand the rigors of hybrid work, and MIL-SPEC testing ensures the ThinkPad X1 Yoga is resistant to vibration, dust, humidity, and more.

Focused on the task at hand

- The **Lenovo ThinkPad X1 ANC headphones** are designed to deliver clear voice communication and maintain productivity on the go.
- Pair the **Lenovo Go wireless multi-device mouse** with up to three devices and effortlessly cycle between them with the push of a button.



The **Lenovo ThinkPad® X1 Yoga** with Windows 11 Pro features a 2-in-1 design with a 360° hinge switching between laptop, tablet, and tent modes, no matter where your “desk” may be.



Processor — Up to Intel vPro®, an Intel® Evo™ Design with 13th Gen Intel® Core™ i7



Memory — Up to 64GB LPDDR5



Graphics — Intel® Iris® Xe graphics



Storage — Up to 2TB Gen 4 performance PCIe NVMe SSD



Lenovo recommends Windows 11 Pro for Business.

Mobile efficiency made for today's workforce

For a workforce that's constantly on the move — meeting clients, traveling for business, or creating content — devices need to meet mobile demands.

Productivity features are built right in. The **ThinkBook® 13x** thin and light laptop with Windows 11 includes efficiency tools like AI Meeting Manager, a speech recognition conferencing tool fueling improved collaboration.



Processor — 12th Generation Intel® Core™ i5-1235U processor (E-cores up to 3.30 GHz; P-cores up to 4.40 GHz)



Graphics — Integrated Intel® Iris® Xe graphics



Memory — 8GB LPDDR5-4800MHz (soldered)



Storage — 256GB SSD M.2 2242 PCIe Gen4 TLC

Small outside, big inside

The ThinkBook 13x features a 16:10 display with extremely narrow bezels — the screen-to-body ratio is above 91% — that dominates the frame when the top cover is opened. Plus, the keyboard stretches nearly edge to edge, providing bigger keys and the feel of typing on a larger laptop.

A better security experience

The standard infrared (IR) camera lets users log in with just their face. Step away, and a presence sensor can log them out. Glance by Mirametrix® provides alerts if someone behind the user looks at your screen.



Lenovo recommends Windows 11 Pro for Business.

Efficiency on the move

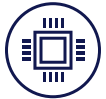
- The **Lenovo Essential compact wireless mouse** features an ambidextrous design that makes it easy to use in any workplace setting. And a single AA battery lasts up to 12 months (depending on usage).
- The **Lenovo Powered USB-C Travel Hub** provides one-stop travel docking with one cable and six connectivity options in a minimalistic design.
- The **Lenovo ThinkPhone by Motorola** brings PC and mobile experiences together like never before, creating seamless integration between ThinkPhone and ThinkPad devices. Share files, images, and even apps instantly.



Empower the power users everywhere

Compute-intensive workloads like graphic design, 3D modeling, and video editing demand more horsepower, but putting that horsepower to work effectively in hybrid work situations requires solutions that address the whole user experience.

The **ThinkPad® P1** mobile workstation blends form and function with an elegant carbon fiber weave and lightweight design, starting at just 1.8kg/3.99 lb. Optimized airflow and thermal saturation keep the P1 running fast and efficiently under heavy processing.



Processor — Intel vPro® Enterprise with up to Intel® Core™ i9 H Series processors (up to 14 cores, up to 5.0GHz)



Memory — Up to 64GB DDR5



Graphics — Up to NVIDIA RTX™ A5500 16GB VRAM



Storage — Up to 8TB M.2 PCIe Gen4 NVMe Performance SSD



Lenovo recommends Windows 11 Pro for Business.



Power never looked so good

The ThinkPad P1 features a 16" display with a narrow bezel and 16:10 aspect ratio for increased screen real estate. Built-in X-rite color calibration and Dolby Vision™ HDR ensure that images are vibrant and colors are true to life.

Enterprise capabilities for small business

Equipped with Intel vPro® Enterprise for Windows OS, the ThinkPad P1 delivers the power and security that today's small businesses need.

Making the experience seamless

- The **Lenovo ThinkPad Thunderbolt™ 4 workstation dock** delivers category-leading premium docking performance with 30Hz display support and 230W of peak power delivery.
- Sculpted using the latest ergonomic science, the **Lenovo Go wireless split keyboard** features strain-reducing vertical tenting and a negative tilt that ensures users' posture is correctly aligned at all times so they can maintain focus.

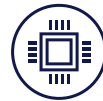




Business-grade reliability for the office

A more stationary workforce demands reliability and performance to get the work done as efficiently — and comfortably — as possible.

Designed to give you more freedom and flexibility in the office, the **ThinkPad® T14** has a sleek and lightweight body that makes it easy to carry, and a larger screen with a 16:10 aspect ratio delivering the feel of a 16" laptop.



Processor — Intel vPro® Enterprise with up to 13th Generation Intel® Core™ i7 vPro® U and P Series processors



Memory —
Up to 32GB LPDDR5x



Graphics —
Integrated Intel® Iris® Xe



Storage —
Up to 2TB PCIe Gen 4



Enhanced user experience

The ThinkPad T14 includes digital wellness features like posture alerts and Eyesafe® display options to reduce fatigue.

Everywhere connectivity

Along with an expansive array of ports, the ThinkPad T14 also features Gigabit internet speeds with Intel® Wi-Fi 6E and LTE CAT 4, CAT 16, and CAT 20 connectivity options.



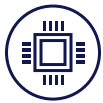
Essential elements for a productive office

- The **Lenovo Essential FHD webcam** is powered by a full HD 1080p 2-megapixel CMOS camera for clear collaboration. Full stereo dual mics are perfect for conferencing or long-distance video calls.
- The **Lenovo Professional wireless keyboard and mouse combo** is a full-size keyboard and mouse combination in a modern wireless solution. The slim three-zone keyboard with number pad has responsive quiet keys and a premium typing experience.

Small form factor, big benefits for your office

Versatile desktop solutions can fill a wide range of needs for small businesses, from back-office operations to customer kiosks and powering digital signage.

The **ThinkCentre® Neo 50s** small form factor (SFF) packs a lot of power in a space-saving business PC. A breeze to set up anywhere, the ThinkCentre Neo features multiple front and back USB ports for peripherals and a range of video connection options — from VGA to DisplayPort to HDMI.



Processor — 13th Generation Intel® Core™ i5-13400 processor (E-core Max 3.30GHz, P-core Max 4.60GHz with Turbo Boost, 10 cores, 16 threads, 20MB cache)



Memory — 8GB DDR4 3200MHz



Graphics — Integrated Intel® UHD graphics 730



Storage — 256GB SSD M.2 2280 PCIe Gen4 TLC Opal



Lenovo recommends Windows 11 Pro for Business.



Cool under pressure

With our Intelligent Cooling Engine (ICE) 6.0, system performance is optimized based on your workload. This enables superb energy efficiency with over 40kWh per unit per year in power savings.

Built to grow with your business

Easy to upgrade and expand, the ThinkCentre Neo 50s desktop can be customized to meet your computing needs today and tomorrow. It's compact but still has space, including PCIe slots, for you to easily add extra graphics or storage.

Contribute to a more sustainable world

In addition to offering energy-efficient technology solutions, Lenovo also provides a way to offset the carbon footprint of your technology purchases through Lenovo CO₂ Offset Services. The offsets support Climate Action projects verified by independent third-party organizations including the United Nations, CDM, Gold Standard®, and Climate Action Reserve.

Learn more at www.lenovo.com/CO2-Offset-Services.

Efficiency-enhancing peripherals

Whether it's in the office or the home office, maintaining peak efficiency requires an environment suited to each employee's working style.



Lenovo recommends
Windows 11 Pro for Business.

On-the-go work made easy

The **ThinkVision® M14** portable monitor provides multi-screen multi-tasking anywhere. Innovative USB-C ports on each side of the monitor, along with its ambidextrous design, allow both left- and right-handed users to work easily.

- Screen size — 14.0"
- Display resolution — 1920 x 1080
- Brightness — 300 cd/m²
- Aspect ratio — 16:9
- Contrast ratio — 700:1

Expand the potential of in-office productivity

With a 5MP camera, two built-in 5W speakers, VoIP functionality, and two noise canceling microphones, the **ThinkVision® T27hv-30** monitor makes collaboration seamless. The large screen size and QHD resolution provide plenty of real estate for work documents, and there's a DP-out port for easy daisy-chaining.

- Screen size — 27.0"
- Display resolution — 2560 x 1440
- Brightness — 300 cd/m²
- Aspect ratio — 16:9
- Contrast ratio — 1000:1
- Backlight — WLED

Impress with a tablet purpose-built for professionals

Whether you're looking to improve small business efficiencies, deliver slicker client experiences, or take work on the go, the **Lenovo Tab M10** is a perfect fit. It's slim, stylish, and durable with blazing-fast Wi-Fi and enterprise-grade audio.

- Processor — MediaTek® P22T (4 x 2.3GHz + 4 x 1.8GHz)
- Operating system — Android™ 10
- Display — 10.1" HD (1280 x 800) IPS, touchscreen, 400 cd/m²
- Memory — Up to 4GB LPDDR4X (soldered)



Productivity boosters for your business

Keeping your team at peak efficiency takes more than industry-leading hardware. The right applications, services, and support take the burden off internal support resources and let you focus on productive tasks.



 Windows 11

Lenovo recommends
Windows 11 Pro for Business.

Microsoft 365

No two businesses are the same. And the tools your employees need to succeed are unique to your goals and challenges. That's why Microsoft 365 through Lenovo offers a wide array of tools, apps, and benefits to support your business from anywhere.

We also offer an array of managed services for M365 users that can streamline every aspect of their experience.



Lenovo Support for M365 — Expert M365 assistance from IT admins to end users. With two tiers available, Professional and Advanced Support, pay for exactly the support you need and none of what you don't.



Lenovo Backup for M365 — Get comprehensive, automated data backup and managed recovery, and rest easy knowing our experts can always retrieve lost data so your business keeps running.



Lenovo Migration for M365 — Transform your small business for a digital hybrid work experience. Lenovo's Migration Services for M365 can easily and expertly move your data from legacy platforms to M365 tenants.

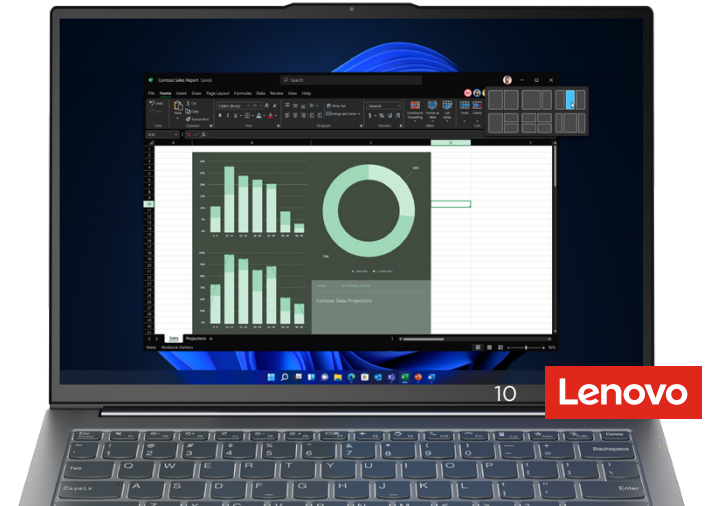
Check out our [productivity brochure](#) to learn more.

Set up every end user for success, right from the start

Hit the ground running faster. Lenovo's exclusive software add-ons for business-critical applications like Dropbox and DocuSign can help save you time, money, and the hassle of multiple vendors.

Optimize PC performance with Lenovo Smart Performance Services

Behind the scenes, Lenovo Smart Performance conducts automatic PC performance monitoring and repairs, resolving common issues. Turn on Smart Performance for quicker PC startups, improved performance and stability, and lightning-fast application launches.



Peace of mind around the clock with Lenovo Services

From managing day-to-day issues with end-user devices to ensuring they're all patched and updated against the latest cyberthreats, keeping your technology safe and secure can feel like a full-time job.

Let Lenovo take the burden off you and your team so your business keeps moving forward.

Deliver an exceptional user experience

Lenovo Premier Support provides users with 24/7/365 direct access to Lenovo technology experts if issues arise. Get a single point of contact for end-to-end case management and priority service delivery and repair parts. And you can reach them any way you want — through a direct Premier Support phone number, live chat, or an e-ticket.

Take that support to the next level with **Lenovo Premier Support Plus**, which incorporates AI-powered proactive and predictive services to help identify and resolve issues before they become problems.



Lenovo recommends
Windows 11 Pro for Business.

End-to-end protection for your small business

Lenovo ThinkShield delivers built-in adaptable security solutions — such as remote management, self-healing BIOS, secure wipe, device usage and health, and firmware security — to defend against software and hardware attacks by ensuring firmware integrity and providing real-time alerts for any attack attempts.

In addition to the built-in features that expand on Windows 11 Pro security elements, Lenovo ThinkShield brings best-of-breed solutions together to ensure end-to-end security for your employees no matter where they're working.



ThinkShield Threat Isolation powered by BUFFERZONE includes patented containment technology that isolates threats before they can harm your organization, making a safe environment for email, web, and file management.



ThinkShield Data Defense powered by Cignet protects against ransomware attacks and ensures data availability and integrity.



ThinkShield Hardware Defense powered by Sepio protects against rogue or compromised devices, hardware implants, unauthorized device connections, malicious peripherals, or manipulated firmware on devices.



Absolute Endpoint Resilience software provides device fleet visibility, control, and management to help ensure your defense stays secure and runs smoothly.

[Learn more >](#)

A smarter approach to simplifying your technology

As-a-service solutions are an increasingly popular way for small businesses to acquire and manage the critical tools they use to conduct business every day.

Lenovo TruScale Device as a Service (TruScale DaaS) gives you access to the latest devices and Lenovo's entire portfolio without upfront capital investment by leveraging a pay-as-you-go model.

- Every aspect of the technology lifecycle is covered, from provisioning to deployment, support, management, and secure, environmental disposal at end of life.
- Scale seamlessly as your needs change.
- Provide faster refreshes for your team.
- Free up your IT resources for more strategic initiatives.



Plus, Lenovo TruScale DaaS can deliver up to a **35% potential reduction** in device-related IT costs* and a **50% faster** time to productivity.**

Data center solutions engineered for small business

When it comes to meeting your data center needs — whether on-premises, in the cloud, or hybrid — Lenovo has the solutions and services to support your needs with enterprise-grade performance.

Spend less time focused on your infrastructure with cost-efficient, flexible server and storage solutions designed to meet the ever-changing landscape of your growing organization. Lenovo can help design and implement your IT framework for the future so you can be more competitive today and tomorrow.



Growth support — Increase business agility and quickly adapt to market changes by leveraging a reliable, open infrastructure. Lenovo solutions, comprised of industry-leading servers and storage, integrated software, and support services, evolve with your business needs and provide reliable uptime.



Easy IT — Maximize your business productivity by automating your infrastructure. Optimize your IT with infrastructure solutions that self-heal and manage without dedicated IT resource requirements.



Protection — Proactively anticipate, prepare for, and adapt to adverse events to keep your business operating effectively. Realize fewer disruptions from security breaks, failures, and data losses with proven Lenovo infrastructure solutions that provide real-time insights and tamper protection options.

Lenovo's ThinkSystem servers have consistently provided top reliability among all x86 servers for nine consecutive years.



Lenovo recommends
Windows 11 Pro for Business.



Get clarity on your data center

Lenovo XClarity™ Administrator is a resource management solution designed to reduce complexity and enhance the availability of up to 1,000 Lenovo devices and infrastructure solutions. This solution provides hands-off infrastructure management that automates discovery, inventory, tracking, updates, monitoring, and provisioning to maximize your business's productivity.

Ready for a partner who shares your vision for success?

A smarter technology partner helps small businesses grow when times are good — and stay resilient when they're not. As a trusted partner, we'll work with your small business on creating digital solutions that increase efficiency, productivity, and security, helping you grow your bottom line while delivering an outstanding employee experience.

Contact your Lenovo small business expert today and see what we can achieve together.

Do business like a Pro

Lenovo understands small business. That's why we offer **Lenovo Pro** — a free program for our small business customers featuring exclusive offers and resources to stay ahead, as well as 1:1 access to dedicated business advisors.

Join Lenovo Pro for instant access to the business-critical IT tools you need to succeed — whether you're a startup or a mature business.

[Learn more.](#)



Lenovo recommends
Windows 11 Pro for Business.



Source

1 Software Advice, "Trend Report: These Are the 5 Most Important Tech Trends for SMBs in 2023," January 2023

* Lenovo TruScale DaaS ROI Tool. This is a sample representation of Lenovo customer data assuming a 3-year replacement cycle with a modern management approach at an average DaaS monthly price, device repair rate of 2%, and IT resource annual salary of \$70,000 USD. The above does not constitute a guarantee of savings. Actual customer savings may vary. All purchases of DaaS are subject to conclusion of a formal contract.

** Based on reduced steps of deployment with Lenovo UEM, per the UEM customer-facing deck.

© Lenovo 2023. All rights reserved. v1.00 September 2023.

**Smarter
technology
for all**

Lenovo