

Google Meet hardware

Series One



Connect remote students and educators with Google Meet classroom kits.

Deliver **captivating** and **immersive** learning experiences for hybrid and remote classrooms. Series One meeting room kits from Lenovo, coupled with versatile rolling carts and mounting hardware, help teachers engage learners—so no student feels left behind.

Flexible

Automatic framing technology helps educators remain front-and-center for students joining classes virtually.

Immersive

The best of Google intelligence and high-quality components deliver optimized audio and video that helps students and teachers feel like they're in the same room.

Effortless

With rolling carts designed for Series One, setup is easy, cost-effective and keeps equipment more mobile.



Google Meet

Lenovo

Series One

Best-in-class for the classroom



Reduce distractions

TrueVoice™

Groundbreaking audio isolation technology can process up to 44 channels, eliminating distracting sounds and amplifying human voices. So attention stays where it should.



Put focus where it belongs

Participant Framing

A true 4K camera with a large image sensor provides pan, tilt and zoom effects digitally so teachers are framed clearly – and automatically – using powerful Google AI.



Create consistent experiences

Meet Compute System

With Google Edge TPUs built in, the compute system is made to handle AV workloads along with running the latest in Google AI as efficiently and reliably as possible.



Control with a touch

Touch Controller

A low profile screen and single cable design allows the touch controller to always be in reach. Or go hands-free with Hey Google voice controls.



Hear and be heard

Mic Pods

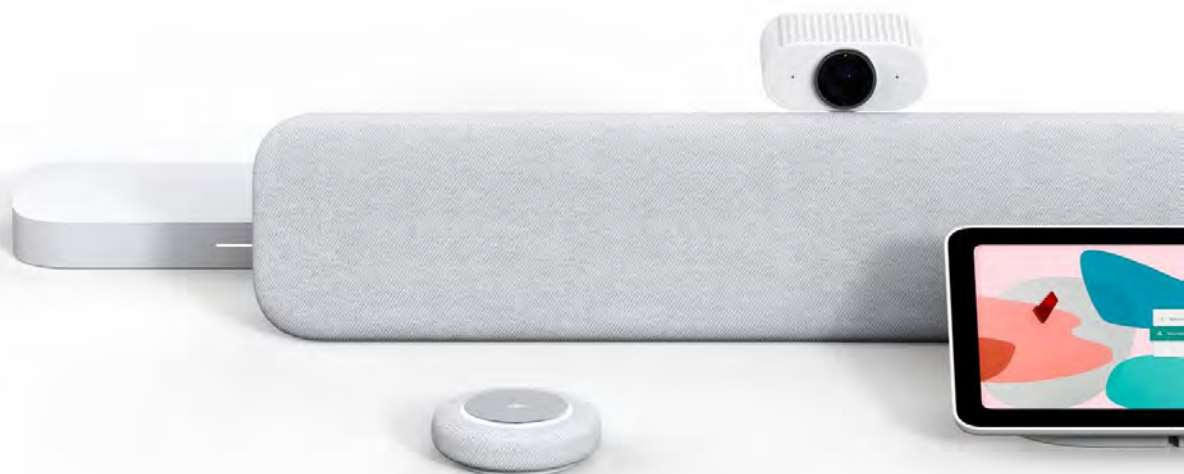
Expanding kits for larger rooms can be done with just an ethernet cable and the tappable Mic Pod, which expands microphone reach and allows for mute/unmute control.



Make setup simple

Less clutter and complexity

Power over Ethernet connects Series One components using color-coded cables with RJ45 connectors that make installation easy and cost-effective.



Google Meet

Lenovo

Use cases for education

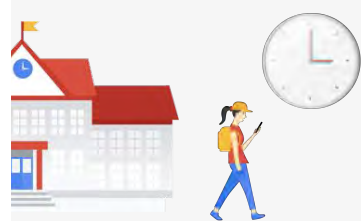
Remote classrooms



With the safety of students and faculty top of mind, remote classes aren't just essential now, they're the future of education.

With the right equipment, educators can create consistent, high-quality learning environments where online students feel engaged and can participate with fewer distractions. The pitfalls of distance learning can be avoided with the right tools for the job.

Hybrid classrooms



With the "next normal" on the horizon, planning for a hybrid environment should be on every school's agenda.

When the need for distance and a lack of space collide, the hybrid model can be the way of the future. Many schools were already transitioning to hybrid learning prior to the pandemic. This model can consistently serve more students and keep everyone safe—without sacrificing learning.

Guest speakers



When it comes to engaging students, the pandemic has forced schools and institutions to reimagine what's possible.

Video meeting hardware enables educators to forgo boring slideshows or videos and bring guest speakers right into the virtual classroom from anywhere in the world. Students can now interact directly with subject matter experts and get their questions answered by those with first-hand knowledge.

Inclusivity



Making sure everyone gets the best education possible means being more accommodating to those with unique needs.

With the right video solutions, students with physical or learning challenges that might make in-classroom education impossible can remain engaged. Special needs educators can reach more students than ever before in ways that are both convenient and cost-effective.

Better learning experiences for every classroom

Made for mobility



Small Room Kit

Best for remote classrooms

- Smart Camera
- Smart Audio Bar
- Meet Compute System
- Remote Control for added mobility



Medium Room Kit

Best for hybrid classrooms

- Smart Camera
- Smart Audio Bar
- Meet Compute System
- Touch Controller
- Mic Pod



Large Room Kit

Best for in-person classrooms

- Smart Camera XL
- Smart Audio Bar
- Meet Compute System
- Add-on Audio Bar
- Touch Controller
- Mic Pod (x2)

Built for built-in

Google Meet

Lenovo

Series One

Specifications

Series One Meet Compute System

135 mm x 284 mm x 29 mm



CPU: Intel i7-8550U
Memory: 4GB RAM
Storage: 128GB SSD
Wall mount and table stand

Connections:

WiFi (802.11AC) 2.4 GHz / 5 GHz
Bluetooth 4.2, Ethernet (PoE)
(2) HDMI 1.4 output with CEC
(1) HDMI 1.4 input video port

(5) RJ-45 Ethernet ports
(3) Type-A and (1) Type-C USB ports
(1) Headphone jack w/ mic support (3.5 mm)

Smart Cameras



Smart camera

84 mm x 107 mm x 42 mm

Image: 12 MP 1/2.3" CMOS Sensor, up to 1080p @ 30 fps; f/2.8 aperture

Optics: Ultra-wide angle glass optics; 120° horizontal field of view

Connection: Ethernet (PoE)

Smart camera XL

84 mm x 122 mm x 52 mm

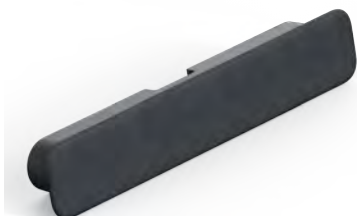
Image: 20.30 MP 1" CMOS Sensor, up to 1080p @ 30 fps; f/2.9 aperture

Optics: Wide angle glass optics; 95° horizontal field of view

Connection: Ethernet (PoE)

Smart Audio Bar

95 mm x 705 mm x 133 mm



Speaker:

20W RMS power
80Hz - 24kHz frequency response

Microphone: 8 element linear beamforming array with 100Hz - 24kHz pickup

Audio Performance: AEC, ANC, and TrueVoice™ multi-channel noise cancellation

Connections:

(1) Ethernet (PoE)
(2) RJ45 (daisy chain output data and power)
(1) USB-C with USB 2.0 UAC
(1) Stereo analog RCA output (for assistive listening devices)

Range:

Optimal pickup range of up to 4m

Google Meet

Lenovo

Specifications

Add-on Audio Bar

95 mm x 705 mm x 133 mm



Speaker:

20W RMS power
80Hz - 24kHz frequency response

Range:

Optimal pickup range of
up to 4m

Microphone:

8 element linear beamforming array
100Hz - 24kHz pickup

Mic Pod

95 mm x 95 mm x 30 mm



Microphone: 8 element, circular beamforming array; 100Hz - 24kHz pickup

Connections:

(1) Daisy Chain input port for data and power (up to 4 mic pods)
(1) Daisy Chain output port for data and power (up to 4 mic pods)

Range:

Optimal pickup range of up to 2m

Touch Controller

164 mm x 245 mm x 91 mm



10.1" anti-smudge touchscreen

Color sensor
Orientation sensor

Resolution: 1280 x 800 X 3(RGB) LCD with Optically Bonded multi-touch screen

Connection: 1x 10Gb PoE connector

Remote Control

130 mm x 45 mm x 14 mm



2.4 RF remote

10 keys (Navi Key & End Key & Upper Keys); QWERTY key: 38 keys

Battery: Rechargeable lithium ion with USB powered docking station