

# Content Creation Laptops

The Content Creation series is crafted to be the perfect tool to enable you to be your best. With cutting-edge AI software, we offer a fully line-up of laptops that caters to the different task of creators. The Content Creation series provides high graphic performance and efficient processors to build your creations.



CreatorPro X18  
HX A14V



Creator Z17  
HX Studio A14V



Creator  
CreatorPro 16 AI Studio A1V



Creator  
CreatorPro M16 HX C14V



Creator M14 A13V



Creator A16 AI+



### Even More Strict Panel Examination & Calibration

For the display panels labeled as True Pixel, they need to be lit up with full brightness for 48 hours before calibration. By doing so the color and brightness of the display panels will get more stable, promising even more accurate color reproduction with lower Delta-E after calibration 48 HR of full brightness for stable color & brightness before calibration

### Calibration Report

From 2023, every True Pixel and Calman Verified certified laptop will be bundled with the exclusive calibration report, which users can find it in the True Color app. It will show the Delta-E value under each color segment and users can know more about their display with it

### Software Integration

The calibrated profiles will be inputted into the hidden storage partition of laptops. Once you power on the laptops, the built-in True Color app will automatically apply the profiles to the displays and you will be favored with the most precise color out-of-box. Besides providing accurate color, the exclusive True Color app also allows you switching between different color spaces or re-calibrate the display with popular calibrators, bringing greater convenience



2560X1600



Per-unit Factory Calibration



Color Accuracy

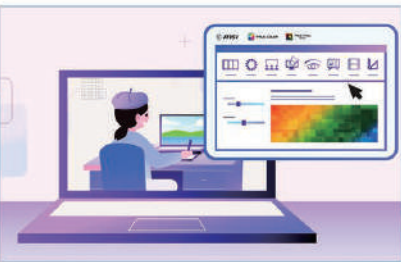
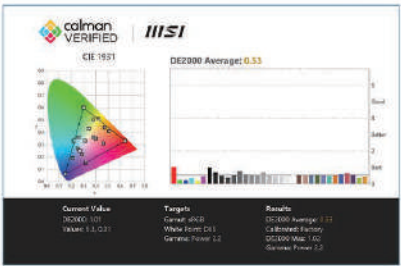
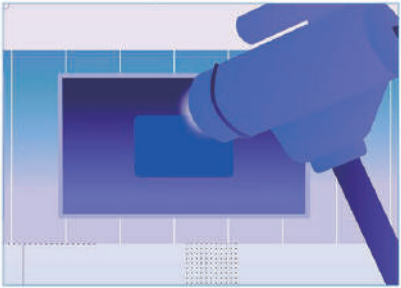


Verified by industry leading color calibration solution provider.

## Spectacular Visual Experience

Visualization matters, especially for content creations. The exclusive True Pixel display delivers true-to-life images. Highlighting five significant features – QHD+ resolution, Delta E <2, True Color Technology and Verified by CalMan– tools necessary for creative work, design, photo and video editing.

\* Display accuracy and Delta-E value may change over time as displays age due to normal wear and tear. Periodical color calibration is recommended for optimal color accuracy.

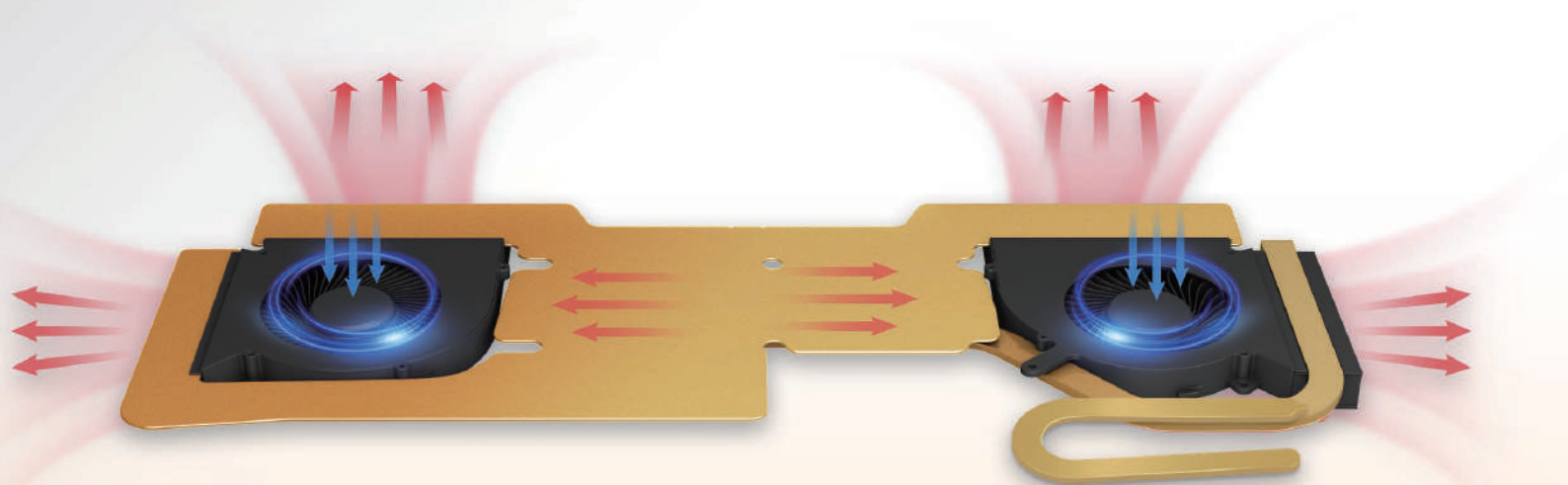




## Vapor Chamber Cooler

With the exclusive Cooler Boost Technology, the brand-new Vapor Chamber Cooler design is a vital part of CreatorPro 18 HX AI. The larger heat capacity reduces the noise and temperature, keeping performance stable while using high-demanding software.

The enlarged heat capacity reduces noise and temperature significantly, and maintains performance stability while using high-demand software.



### Dissipate Heat More Efficiently

The Vapor Chamber Cooler has a larger dissipating surface area, allowing heat to spread multi-directionally and in a more even, faster, and efficient way.

### Temperature Will Vary More Steadily

Since the vapor chamber has a larger heat capacity to store excess heat, the temperature will vary more steadily. Which helps to avoid throttling and keep performance stable.

### Less Noise

With temperature ranging more steadily, the fans will not need to circulate as much or create as much noise.

### CPU and GPU Share One Cooling System

The CPU and GPU share the same cooling system, enabling either processor to take advantage of the entire cooling system for more efficient usage.



# Ultimate Compatibility

MSI CreatorPro are ISV certified systems. Officially recognized and certified by major ISVs in engineering, 3D modeling, design, and more. MSI workstations are guaranteed to offer an unmatched professional experience with applications in Adobe, AutoDesk, Dassault, etc. There is no comparison out there.



MSI recommends Windows 11 Pro for business.

# Laptop Reliability Matters

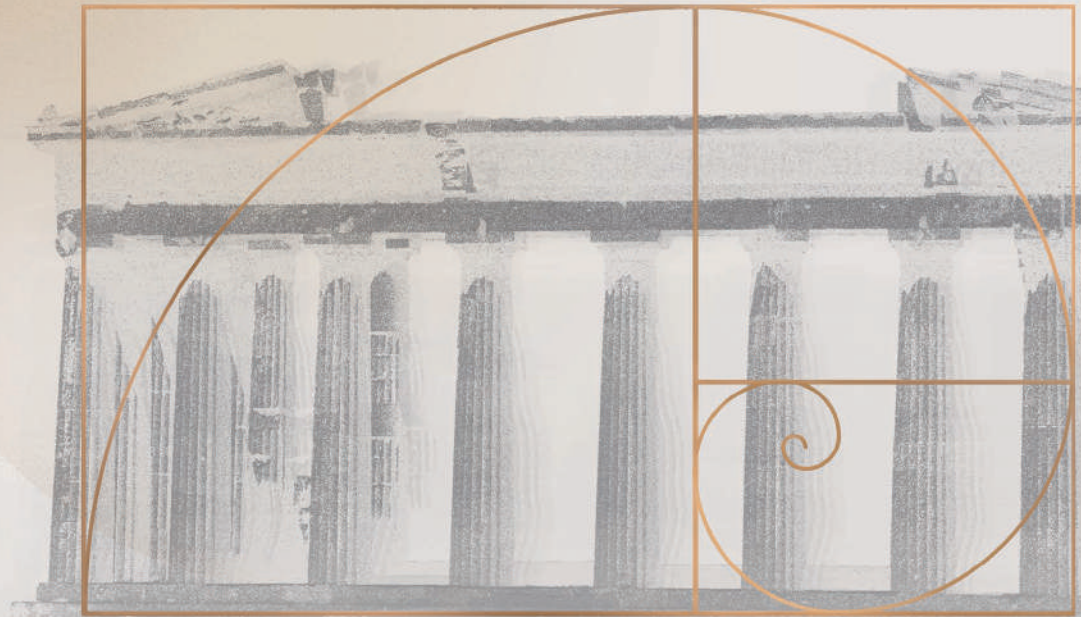
Product material, reliability, and durability all matter to MSI. To provide the best in class laptops for all kinds of professionals, MSI laptops go through rigorous and extensive testing. Laptops are tailored with professionals in mind and for those that have an exploratory drive. MSI laptops are highly reliable and support you as you continue to pursue your passions.



Multiple Tests Passed







## Tech meets Aesthetic

### Golden Ratio – The foundation of Aesthetic

The finest creations are often based upon precise calculation and design. Some of the most representative works come from the Renaissance, the era that's known for mathematic and geometrical beauty formed by the "Golden Ratio". Golden Ratio comes from Fibonacci sequence, which is formed by Pythagoras, one of the famous Ancient Greek Mathematician.

Each number in the Fibonacci sequence is the sum of the previous two numbers. And the ratio of any two adjacent numbers is close to 1.618, this perfect formula is considered the law of beauty and applied in our modern architecture and art creations.

## Aesthetics in Design

Based on its people-centric design philosophy, the Content Creation Series Laptops combines rounded and fluid form with sleek edges, not only merging both postmodernism designs on its appearance of the product, the 16:10 display also echoes the Golden Ratio 1.618 - the perfect ratio considered as the law of beauty.







Creator A16 AI+  
Infinite Creativity with AI

MSI recommends Windows 11 Pro for business.

Model Name	Creator A16 AI+ A3XV / A3HV
Processor	Up to AMD Ryzen™ AI 9 HX 370 Processor
Operating System	Windows 11 Home / Windows 11 Pro (MSI recommends Windows 11 Pro for business.)
Memory	LPDDR5x onboard, up to 32GB, dual channel
Display	16" QHD+ (2560x1600), 16:10, 240Hz Refresh Rate, 100% DCI-P3(Typical), VESA DisplayHDR™ True Black 600, OLED panel 16" QHD+ (2560x1600), 16:10, 240Hz Refresh Rate, 100% DCI-P3(Typical), IPS-Level panel
Graphics	NVIDIA® GeForce RTX™ 4070 Laptop GPU 8GB GDDR6 (A3XVGG/A3HVGG) NVIDIA® GeForce RTX™ 4060 Laptop GPU 8GB GDDR6 (A3XVFG/A3HVFG)
Storage Slot	2 x NVMe M.2 SSD by PCIe Gen4 x4
Keyboard	Per-Key RGB keyboard with Copilot Key
Audio	2 x 2W Speakers and 4 x 2W Woofers designed by Dynaudio system 1 x Audio combo jack DTS Audio Processing Hi-Res Audio ready
I/O Port	1 x USB4® Type-C / DisplayPort™ / Power Delivery 3.0 (Thunderbolt™ 4 Compatible) 2 x USB 3.2 Gen2 Type-A 1 x HDMI™ 2.1 (8K@60Hz / 4K@120Hz)
Communication	Gigabit Ethernet (up to 2.5GbE) / Wi-Fi 7, Bluetooth v5.4
Webcam	IR FHD type (30fps@1080p) with HDR & 3D Noise Reduction+ (3DNR+)
Security	Firmware Trusted Platform Module (fTPM) 2.0 / Microsoft Pluton Security Technology / IR Webcam / Webcam Shutter / Fingerprint Reader / Kensington Lock
Battery	4-Cell, Li-Polymer, 99.9Whr
Power Adapter	240W
Dimension	355.8 (W) x 259.7 (D) x 19.95 (H) mm
Weight	2.1 Kg
Exclusive Features	1. Lightweight yet sturdy with Magnesium Aluminum Alloy chassis. 2. Exclusive Cooler Boost 5 cooling with 2 fans and 5 heat pipes. 3. 16:10 OLED QHD+ panel with DisplayHDR™ True Black 600 and 240Hz refresh rate and color accuracy bring an extraordinary visual experience. (*Optional) 4. Wi-Fi 7 for redefined gaming experience with higher bandwidth and lower latency. 5. 2 × 2W Speakers + 4 x 2W Woofers designed by Dynaudio system. 6. MSI AI Engine analyze your behavior and the applications used, and automatically adjust various system settings that best fit your need.

\*Product specification, functions and appearance may vary by models and differ from country to country. All specifications are subject to change without notice.  
\*On some devices, Copilot+ PC experiences require free updates available starting later this year and continuing into 2025. Timing varies by device and region.  
See aka.ms/copilotpluspcs





# CreatorPro 18 HX AI

Mobile Workstation for Professional

MSI recommends Windows 11 Pro for business.

Model Name	CreatorPro 18 HX AI A2XW
Processor	Up to Intel® Core™ Ultra 9 processor 275HX
Operating System	Windows 11 Home / Windows 11 Pro (MSI recommends Windows 11 Pro for business.)
Memory	DDR5, 2 Slots, up to 96GB
Display	18" UHD+ (3840x2400), 16:10, MiniLED, 120Hz Refresh Rate, 100% DCI-P3 (Typ.), VESA DisplayHDR™ 1000 Certified, IPS-Level panel
Graphics	Next Gen professional NVIDIA RTX™ Graphics
Storage Slot	1 x NVMe M.2 SSD by PCIe Gen5 x4 1 x NVMe M.2 SSD by PCIe Gen4 x4
Keyboard	Single Backlit Keyboard (White) with Copilot Key
Audio	6 Speaker designed by Dynaudio system (4 x 2W Speakers + 2 x 2W Woofers) 1 x Audio combo jack Hi-Res Audio ready
I/O Port	2 x Thunderbolt™ 5 (DisplayPort™/ Power Delivery 3.1) 3 x USB 3.2 Gen2 Type-A 1 x HDMI™ 2.1 (8K@ 60Hz / 4K@ 120Hz) 1 x Gigabit Ethernet 1 x SD Express Memory Card Reader 1 x Kensington lock
Communication	Gigabit Ethernet (up to 2.5GbE) / Intel® Killer™ Wi-Fi 7 BE1750, Bluetooth v5.4
Webcam	IR FHD type (30fps@1080p) with HDR & 3D Noise Reduction+ (3DNR+)
Security	Discrete Trusted Platform Module(dTPM) 2.0 / Fingerprint Reader / IR Webcam Webcam Shutter / Kensington Lock
Battery	4-Cell, Li-Polymer, 99.9Whr
Power Adapter	400W
Dimension	404 (W) x 307.5 (D) x 24~32.05 (H) mm
Weight	3.6 Kg
Color	Lunar Gray
Exclusive Features	1. Maximize the CPU and GPU power with MSI OverBoost Technology for the next level performance. 2. Exclusive Vapor Chamber Cooler with 2 fans, Vapor Chamber, 3D Cooling feet, and dedicated PCIe Gen5 SSD cooling design. 3. The 99.9Whr large battery capacity provides longer runtime. 4. MiniLED 4K 120Hz panel with DisplayHDR™ 1000 and 100% DCI-P3 brings an extraordinary visual experience. 5. True Pixel display delivers true-to-life images, which includes Delta E<2, True Color Technology and verified by CalMan. 6. 4 × 2W Speakers + 2 x 2W Woofers provide surround sound designed by world-class Dynaudio system.

\*Product specification, functions and appearance may vary by models and differ from country to country. All specifications are subject to change without notice.





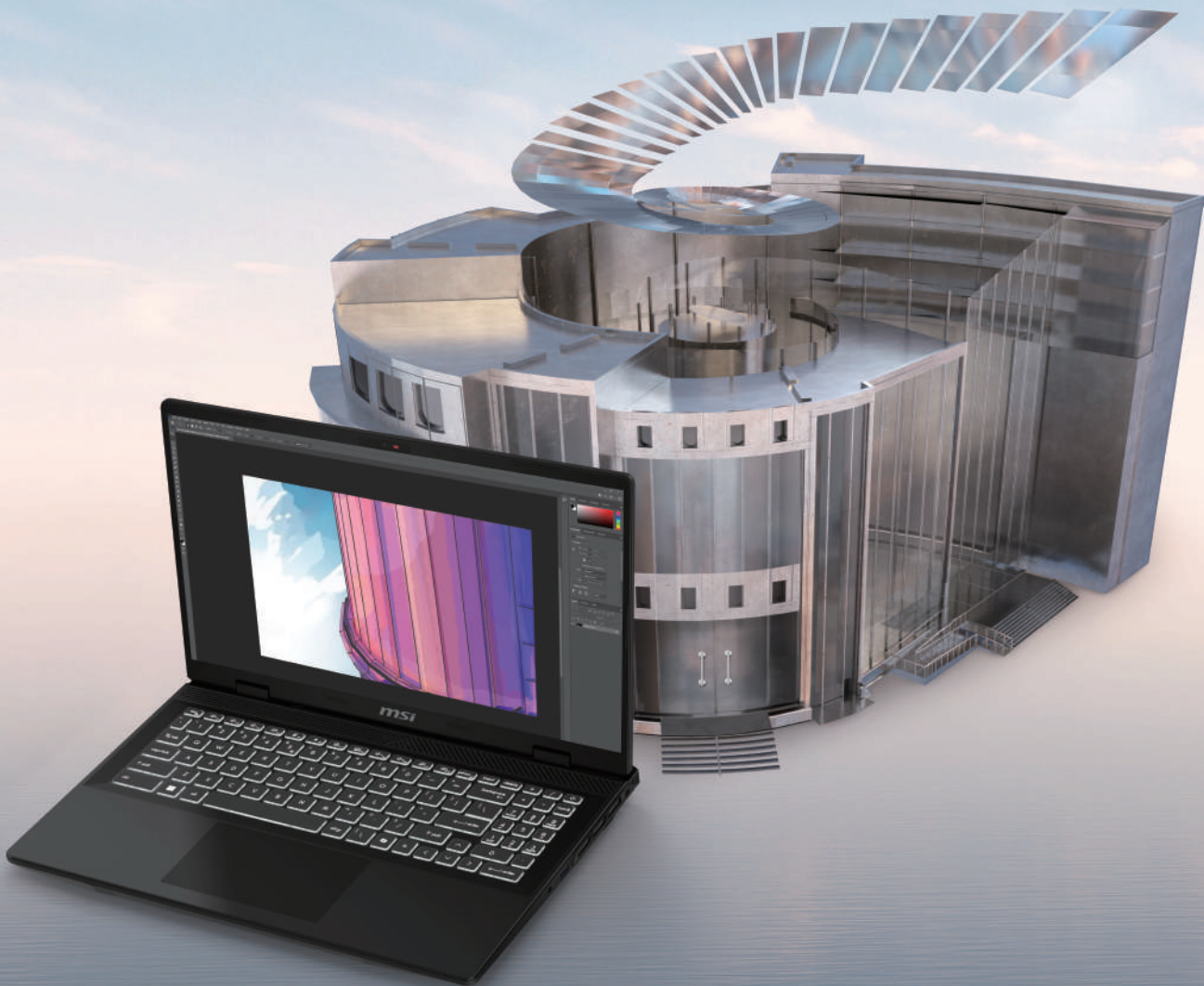
CreatorPro 16 AI  
Mobile Workstation for Professional

MSI recommends Windows 11 Pro for business.

Model Name	CreatorPro 16 AI A2HW
Processor	Up to Intel® Core™ Ultra 9 processor 285H
Operating System	Windows 11 Home / Windows 11 Pro (MSI recommends Windows 11 Pro for business.)
Memory	DDR5, 2 slots, up to 96GB
Display	16" UHD+ (3840x2400), 16:10, MiniLED, 120Hz Refresh Rate, 100% DCI-P3 (Typ.), VESA DisplayHDR™ 1000 Certified, IPS-Level panel 16" QHD+ (2560x1600), 16:10, 240Hz Refresh Rate, 100% DCI-P3(Typical), VESA DisplayHDR™ True Black 600, OLED panel 16" QHD+ (2560 x 1600), 16:10, 240Hz Refresh Rate, 100% DCI-P3 (Typ.), IPS-level panel
Graphics	Next Gen professional NVIDIA RTX™ Graphics
Storage Slot	2 x NVMe M.2 SSD by PCIe Gen4 x4
Keyboard	Single Backlit Keyboard (White) with Copilot Key
Audio	4 Speakers designed by Dynaudio system (2 x 2W Speakers + 2 x 2W Woofers) 1 x Audio combo jack Hi-Res Audio ready
I/O Port	1 x Thunderbolt™ 4 (DisplayPort™/ Power Delivery 3.0) 2 x USB 3.2 Gen2 Type-A 1 x HDMI™ 2.1 (8K@60Hz / 4K@120Hz) 1 x Gigabit Ethernet 1 x Kensington lock
Communication	Gigabit Ethernet (up to 2.5GbE) / Intel® Killer™ Wi-Fi 7 BE1750, Bluetooth v5.4
Webcam	IR FHD type (30fps@1080p) with HDR & 3D Noise Reduction+ (3DNR+)
Security	Discrete Trusted Platform Module(dTPM) 2.0 / Fingerprint Reader / IR Webcam / Webcam Shutter / Kensington Lock
Battery	4-Cell, Li-Polymer, 99.9Whr
Power Adapter	240W
Dimension	355.8 (W) x 259.7 (D) x 19.95 (H) mm
Weight	2.1Kg
Color	Lunar Gray
Exclusive Features	1. 2.1kg lightweight yet sturdy design with Magnesium Aluminum Alloy chassis. 2. Exclusive Cooler Boost 5 cooling with dedicated 2 fans and up to 7 copper heat pipes. 3. The 99.9Whr large battery capacity provides longer runtime. 4. MiniLED 4K 120Hz panel with DisplayHDR™ 1000 and 100% DCI-P3 brings an extraordinary visual experience. (*Optional) 5. True Pixel display delivers true-to-life images, which includes Delta E<2, True Color Technology and verified by CalMan. 6. NVIDIA® Studio Laptop is purpose-built with vivid color displays and blazing-fast memory and storage to boost your workflows.

\*Product specification, functions and appearance may vary by models and differ from country to country. All specifications are subject to change without notice.





# CreatorPro M16 HX AI

Mobile Workstation for Professional

MSI recommends Windows 11 Pro for business.

Model Name	CreatorPro M16 HX AI c2xw
Processor	Intel® Core™ Ultra 7 processor 255HX
Operating System	Windows 11 Home / Windows 11 Pro (MSI recommends Windows 11 Pro for business.)
Memory	DDR5, 2 slots, up to 96GB
Display	16" QHD+(2560 x 1600), 16:10, 240Hz Refresh Rate, 100% DCI-P3 (Typ.), IPS-level panel
Graphics	Next Gen professional NVIDIA RTX™ Graphics
Storage Slot	1 x NVMe M.2 SSD by PCIe Gen5 x4 1 x NVMe M.2 SSD by PCIe Gen4 x4
Keyboard	Single Backlit Keyboard (White) with Copilot Key
Audio	2 x 2W Stereo Speakers 1 x Audio combo jack Hi-Res Audio Ready
I/O Port	1 x Thunderbolt™ 4 (DisplayPort™/ Power Delivery 3.0) 3 x USB 3.2 Gen1 Type-A 1 x HDMI™ 2.1 (8K@60Hz / 4K@120Hz) 1 x Gigabit Ethernet 1 x Kensington lock
Communication	Gigabit Ethernet / Intel® Wi-Fi 6E AX211, Bluetooth v5.3
Webcam	HD type (30fps@720p) with 3D Noise Reduction (3DNR)
Security	Firmware Trusted Platform Module(fTPM) 2.0 / Webcam Shutter / Kensington Lock
Battery	4-Cell, Li-Polymer, 90Whr
Power Adapter	240W
Dimension	359 (W) × 266.4(D) × 21.8~27.9 (H) mm
Weight	2.5 Kg
Color	Lunar Gray
Exclusive Features	1. Unlock full power GPU for the next level performance. 2. Exclusive Cooler Boost 5 cooling with dedicated 2 fans 6 copper heat pipes. 3. Meet the MIL-STD 810H military standard for reliability and durability. 4. QHD+ 240Hz panel and 100% DCI-P3 brings an extraordinary visual experience. 5. True Pixel display delivers true-to-life images, which includes Delta E<2, True Color Technology and verified by CalMan. 6. 3D Noise Reduction Camera (3DNR) restrains signal noise and increase image quality under poor lighting conditions.

\*Product specification, functions and appearance may vary by models and differ from country to country. All specifications are subject to change without notice.



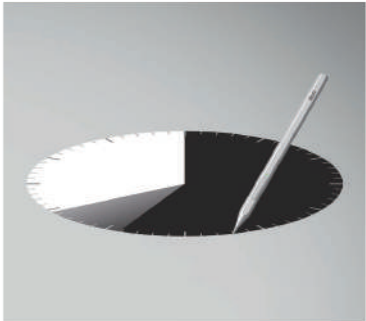


# MSI Pen 2

Turn your ideas into reality

MSI recommends Windows 11 Pro for business.

MSI Pen 2	
Compatibility	Summit 16 AI Evo A2HM / SummitPro 16 AI Evo A2HV / Summit A16 AI+ A3HM Summit 13 AI Evo A2HM / Summit 13 AI+ Evo A2VM
Protocol	MPP2.6
Buttons	3
Chassis Color	Black
Pressure Level	4096
Connectivity	Active Capacity
Report Rate	266 Hz
Haptic Feedback	•
Zero Tip Gap Technology	•
Remote control	•
Battery indicator	•
Tilt	•
Battery Life	Up to 32 hours *Rechargeable battery by USB-C Charging with LED Battery Notifications
Dimension	151.82 x 9.2 mm
Material	Metal
Weight	14.52g



Quick Charge



Microsoft MPP2.6 with Haptic Feedback



Graphite Tips





# USB-C Docking Station Gen 2

Versatile.Exquisite.Productive

To face challenging business environments, you need a flexible and mobile work-style. The MSI USB-C Docking Station Gen 2 takes the most versatile, do-it-all laptops into the next level.

MSI recommends Windows 11 Pro for business.

MSI USB-C Docking Station Gen 2		
Upstream (Connect to Computer)	Requirement	USB 3.2 Gen 2 Type-C w/DP x 1
	Support	PD charge 100W *Only for laptop with PD charge-in function
Downstream Port		USB 2.0 Type-A x 1 USB 3.2 Gen 2 Type-A x 2 (5V/1.5A x 1) USB 3.2 Gen 2 Type-C x 1 (Data only, 5V/1.5A) (Up to 10Gbps, share upstream USB bandwidth)
Video out		DisplayPort 1.4* x 1 HDMI™ x 1 USB 3.2 Gen 2 Type-C* x 1 (support Alt Mode, 5V/3A) *Only for laptop with video output via USB-C. May vary by input signal. (Up to 10Gbps, share upstream USB bandwidth)
Audio		3.5mm Audio Jack Combo (Headphone + MIC)
Ethernet		Gigabit Lan
Adapter		150W (20V/7.5A)
Dimension		165(L) X 80(W) X 30(H) mm
Weight		600g (included base)
OS		Windows 11 / Windows 10

