

Business & Productivity Laptops

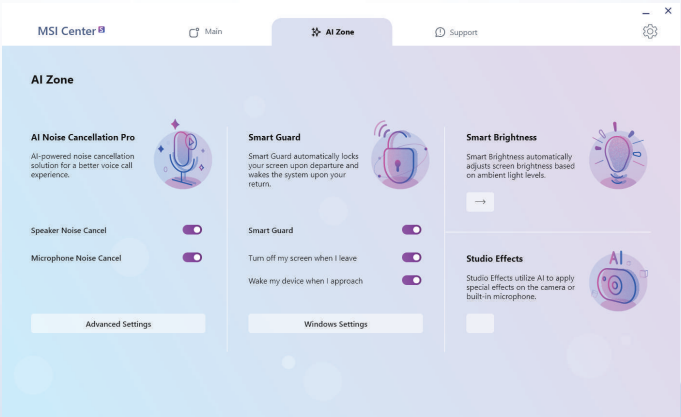
Productivity Starts Here

From upgraded performance to privacy updates, MSI Business and Productivity laptops provide ultimate experience for diverse business and daily scenarios. Devoted to increase working efficiency of professionals from different fields, MSI offers a versatile product line to fulfill expectations of a reliable business partner.



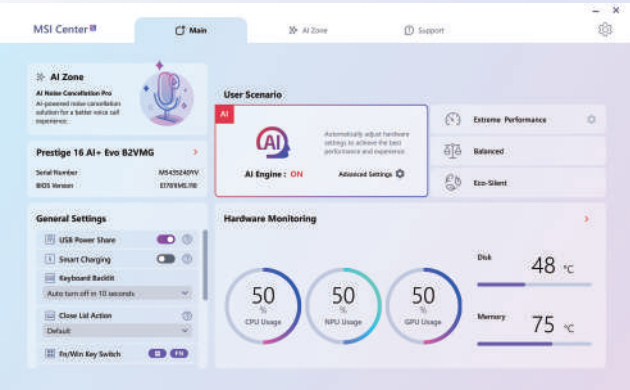


The MSI Center S provides a new interface which is simpler and more effortless. Taking optimization to the next level with easily adjustable system modes and resources for a wide range of scenarios and needs.



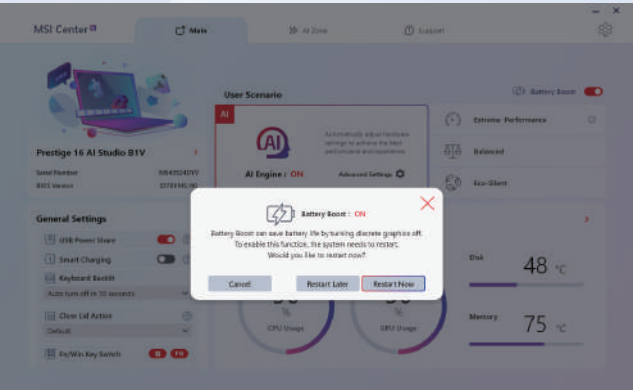
AI Integration Made Easy

Easily access AI capabilities with a dedicated section designed for convenience and efficiency.



Intuitive UI Design

Explore a more straightforward and accessible interface, ensuring every action is effortless.



All-in-One Functionality

Enjoy smooth operations on a single page, with all features readily available.

AI Noise Cancellation Pro

AI-powered noise cancellation solution for a better voice call experience.



Smart Guard

Smart Guard automatically locks your screen upon departure and wakes the system upon your return.



Smart Brightness

Smart Brightness automatically adjusts screen brightness based on ambient light levels.



Studio Effects

Studio Effects utilize AI to apply special effects on the camera or built-in microphone.





Stunning Display



100% DCI-P3



UHD+

3840 x 2400

16:10

Golden Ratio display

Dynamic Colors. Brighter Idea.

Visualize your creatives through a vibrant OLED panel. Producing the pure blacks and brightest whites, its high contrast colors brings both video and image to life. The 16:10 aspect ratio gives you the power for a more spacious workspace and a comfortable visual experience especially during long term use. *This specification may vary by model.

Charge and Go

The latest 140W PD 3.1 fast charging, the maximum charging voltage is update from 20V to 28V that keep your mobile devices stay productivity and powered even when you're busy on work and don't have much time to charge, offers a highly portable and efficient fast charging solution than normal daily laptop.

*This specification may vary by model.





Crystal Clear Conference Experience

With the 5MP, 3D Noise Reduction+ webcam, AI Noise Cancellation Pro and Spatial Array Microphone(3-Mics), you can always enjoy an immersive and clear video conference.



For Excellent Meeting Quality

Denotes approximately 5 million pixels, the 5MP Camera brings higher resolution allowing for sharper and more detailed visuals. The IR making it ideal for tasks like facial recognition and detailed scene analysis.



Capture 360 Sound Degree Without Boundaries

The new Spatial Array Microphone (3-Mics) solution effortlessly switches between immersive 3D audio and pinpointed directional focus.



3D Noise Reduction+



AI Noise Cancellation

The Best Working Scenarios

With 3D Noise Reduction+ (3DNR+) and AI Noise Cancellation Pro technology, MSI ensures a crystal-clear video call experience, delivering superior audio and visual quality.



The PC Can Sense Your Presence

The Smart Guard detects user presence, enabling swift screen activation and deactivation.



Webcam Shutter

Your Privacy Matters

Disable the laptop's camera through Webcam Shutter, providing a private and secure experience.





TPM 2.0 Enterprise-Grade Security

Trusted Platform Module (TPM) technology is designed to provide hardware-based, security-related functions. You can store data & password by encryption keys for advanced security.



Windows Hello

Sign-in using Windows Hello by showing your face or using your fingerprint for an easy and secure access.

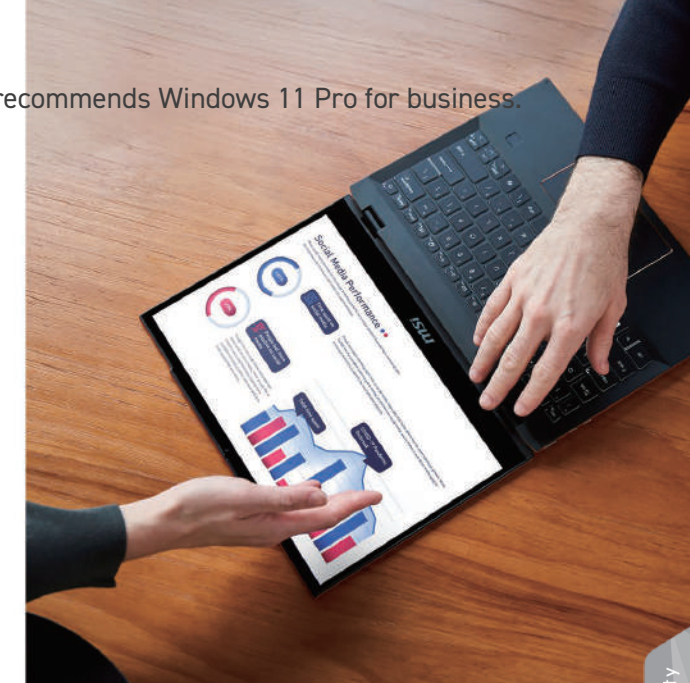


TOUCH SCREEN

Intuitive Touchscreen Experience

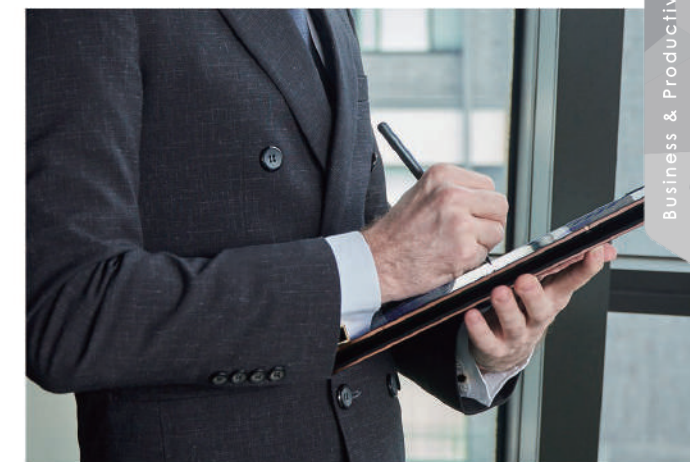
Enjoy a seamless, interactive experience with the responsive touchscreen, designed for intuitive navigation and effortless control. Whether you're swiping through presentations, sketching ideas, or using it as a tablet, the touchscreen makes everything more accessible and versatile.

MSI recommends Windows 11 Pro for business.



Enhanced Creativity with MSI Pen 2

Compatible with the MSI Pen 2, featuring the latest Microsoft MPP 2.6 technology. Enjoy realistic haptic feedback for a realistic writing experience. The MSI Pen 2 lets you precisely capture the finest lines and shading, making it perfect for digital art, note-taking, and more



Light, Elegant and Portable

The Prestige 13 AI Evo is the perfect on-the-go, lightweight laptop ensuring maximum portability and productivity. Crafted in a magnesium-aluminum alloy chassis via Thixomolding with ATT (Advanced Thixomolding Technology). This advanced manufacturing technique optimizes the mold injection process to achieve a seamless metal body, redefining strength and durability.



MSI recommends Windows 11 Pro for business.



Built for Sustainability

The Commercial 14 H blends business-centric design with environmental responsibility - an embodiment of MSI's dedication to sustainability. By utilizing green material, PCR (Post-Consumer Recycled) plastic, ensures not only the products' durability but also commits to a greener world.



Military Grade Laptop Durability Test

Laptops are portable devices that have the chance to operate in various tough environments. MSI has performed extensive tests from the US military-grade standard MIL-STD-810H to provide users with laptops that possess both durability and sturdiness.



Support & Warranty

MSI cares about every customer and provides post-sales support. Our team of software and hardware experts will analyze and help troubleshoot for you. Most of our Business and Productivity laptops include a 3-year depot warranty with the option to enhance the support with on-site services.



24/7 Dedicated enterprise Customer Support Team



3-year depot warranty (select models)



Optional onsite services and accidental damage



Summit 16 / A16 / 13 SummitPro 16

Determined to Succeed

MSI recommends Windows 11 Pro for business.

Model Name	Summit 16 AI Evo A2HM	SummitPro 16 AI A2HV
Processor	Intel® Core™ Ultra 7 processor 255H	Up to Intel® Core™ Ultra 9 processor 285H
Operating System	Windows 11 Home / Windows 11 Pro (MSI recommends Windows 11 Pro for business.)	
Memory	LPDDR5 onboard, up to 32GB, dual channel	
Display	16" QHD+ (2560x1600), 16:10, Touchscreen, 165Hz Refresh Rate, 100% DCI-P3(Typical), IPS-Level panel, Support MSI Pen 2	
Graphics	Intel® Arc™ graphics	NVIDIA® GeForce RTX™ 4050 Laptop GPU 6GB GDDR6
Storage Slot	1 x NVMe M.2 SSD by PCIe Gen4 x4	
Keyboard	Single Backlit Keyboard (White) with Copilot Key	
Sensor	Ambient Light Sensor / Gyroscope / Accelerometer / Magnetometer / Proximity Sensor	
Audio	2 x 2W Stereo Speakers / 1 x Audio combo jack / DTS Audio Processing Spatial Array Microphone (3 Mic) / Hi-Res Audio Ready"	
I/O Port	2 x Thunderbolt™ 4 (DisplayPort™/ Power Delivery 3.0) 2 x USB 3.2 Gen2 Type-A 1 x HDMI™ 2.1 (8K@ 60Hz / 4K@ 120Hz) 1 x microSD Card Reader	1 x Thunderbolt™ 4 (DisplayPort™/ Power Delivery 3.1) 1 x USB 3.2 Gen2 Type-C / DisplayPort™ / Power Delivery 3.0 1 x USB 3.2 Gen2 Type-A 1 x HDMI™ 2.1 (8K@ 60Hz / 4K@ 120Hz) 1 x microSD Card Reader
Communication	Intel® Killer™ Wi-Fi 7 BE1750, Bluetooth v5.4	
Webcam	IR FHD type (30fps@1080p) with HDR & 3D Noise Reduction+ (3DNR+)	
Security	Discrete Trusted Platform Module(dTPM) 2.0 / Fingerprint Reader / IR Webcam / Webcam Shutter	
Battery	4-Cell, Li-Polymer, 82Whr	
Power Adapter	100W Type-C PD	140W Type-C PD
Dimension / Weight	358(W) x 258.55(D) x 16.9~17.35(H) mm / 2.1 Kg	
Exclusive Features	1. MSI Pen 2 with MPP2.6 support offering 4096 level pressure sensitivity and MSI exclusive graphite pen tip. 2. Wi-Fi 7 redefines internet experience with higher bandwidth and lower latency. 3. Trusted Platform Module (TPM) 2.0 technology provides hardware-based, security-related functions. 4. 3D Noise Reduction+ Camera (3DNR+) restrains signal noise and increase image quality under poor lighting conditions. 5. Spatial Array Microphone (3 Mic) solution effortlessly switches between immersive 3D audio and pinpointed directional focus. 6. Sign-in with your face or fingerprint through Windows Hello, and easily authenticate to online services from FIDO 2.	

*Product specification, functions and appearance may vary by models and differ from country to country. All specifications are subject to change without notice.

MSI recommends Windows 11 Pro for business.

Model Name	Summit A16 AI+ A3HM
Processor	AMD Ryzen™ AI 9 365 Processor
Operating System	Windows 11 Home / Windows 11 Pro (MSI recommends Windows 11 Pro for business.)
Memory	LPDDR5x onboard, up to 32GB, dual channel
Display	16" QHD+ (2560x1600), 16:10, Touchscreen, 165Hz Refresh Rate, 100% DCI-P3(Typical), IPS-Level panel, Support MSI Pen 2
Graphics	AMD Radeon™ 880M
Storage Slot	1 x NVMe M.2 SSD by PCIe Gen4 x4
Keyboard	Single Backlit Keyboard (White) with Copilot Key
Sensor	Ambient Light Sensor / Gyroscope / Accelerometer / Magnetometer / Proximity Sensor
Audio	2 x 2W Stereo Speakers 1 x Audio combo jack DTS Audio Processing Spatial Array Microphone (3 Mic) Hi-Res Audio Ready
I/O Port	2 x USB4® Type-C / DisplayPort™ / Power Delivery 3.1 (Thunderbolt™ 4 Compatible) 1 x USB 3.2 Gen2 Type-A 1 x microSD card reader 1 x HDMI™ 2.1 (8K@ 60Hz / 4K@ 120Hz)
Communication	Wi-Fi 7, Bluetooth v5.4
Webcam	IR FHD type (30fps@1080p) with HDR & 3D Noise Reduction+ (3DNR+)
Security	Discrete Trusted Platform Module(dTPM) 2.0 / Fingerprint Reader / IR Webcam / Webcam Shutter
Battery	4-Cell, Li-Polymer, 82Whr
Power Adapter	100W Type-C PD
Dimension / Weight	358(W) x 258.55(D) x 16.9~17.35(H) mm / 2.1 Kg
Exclusive Features	1. MSI Pen 2 with MPP2.6 support offering 4096 level pressure sensitivity and MSI exclusive graphite pen tip. 2. Wi-Fi 7 redefines internet experience with higher bandwidth and lower latency. 3. Trusted Platform Module (TPM) 2.0 technology provides hardware-based, security-related functions. 4. 3D Noise Reduction+ Camera (3DNR+) restrains signal noise and increase image quality under poor lighting conditions. 5. Spatial Array Microphone (3 Mic) solution effortlessly switches between immersive 3D audio and pinpointed directional focus. 6. Sign-in with your face or fingerprint through Windows Hello, and easily authenticate to online services from FIDO 2.

*Product specification, functions and appearance may vary by models and differ from country to country. All specifications are subject to change without notice.
*On some devices, Copilot+ PC experiences require free updates available starting later this year and continuing into 2025. Timing varies by device and region.
See aka.ms/copilotpluspcs.

Model Name	Summit 13 AI Evo A2HM	Summit 13 AI+ Evo A2VM
Processor	Up to Intel® Core™ Ultra 7 processor 255H	Intel® Core™ Ultra 7 processor 258V
Operating System	Windows 11 Home / Windows 11 Pro (MSI recommends Windows 11 Pro for business.)	
Memory	LPDDR5 onboard, up to 32GB, dual channel	LPDDR5x-8533 Memory on Package, 32GB, dual channel
Display	13.3" FHD+ (1920x1200), 16:10, Touchscreen, 100% sRGB(Typical), IPS-Level panel, Support MSI Pen 2	
Graphics	Intel® Arc™ graphics	Intel® Arc™ GPU 140V
Storage Slot	1 x NVMe M.2 SSD by PCIe Gen4 x4	
Keyboard	Single Backlit Keyboard (White) with Copilot Key	
Sensor	Ambient Light Sensor / Gyroscope / Accelerometer / Magnetometer / Proximity Sensor	
Audio	2 x 2W Stereo Speakers 1 x Audio combo jack DTS Audio Processing Spatial Array Microphone (3 Mic) Hi-Res Audio Ready	
I/O Port	2 x Thunderbolt™ 4 (DisplayPort™/ Power Delivery 3.0) 1 x USB 3.2 Gen1 Type-A 1 x HDMI™ 2.1 (4K@60Hz)	1 x Thunderbolt™ 4 (DisplayPort™/ Power Delivery 3.0) 1 x USB 3.2 Gen1 Type-A 1 x HDMI™ 2.1 (4K@60Hz)
Communication	Intel® Killer™ Wi-Fi 7 BE1750, Bluetooth v5.4	
Webcam	IR FHD type (30fps@1080p) with HDR & 3D Noise Reduction+ (3DNR+)	
Security	Discrete Trusted Platform Module(dTPM) 2.0 / Fingerprint Reader / IR Webcam / Webcam Shutter	
Battery	4-Cell, Li-Polymer, 70Whr	
Power Adapter	65W Type-C PD	
Dimension / Weight	300.2(W) x 222.25(D) x 15.9~16.2 (H) mm / 1.39 Kg	300.2(W) x 222.25(D) x 15.9~16.2(H) mm / 1.35 Kg
Exclusive Features	1. MSI Pen 2 with MPP2.6 support offering 4096 level pressure sensitivity and MSI exclusive graphite pen tip. 2. Wi-Fi 7 redefines internet experience with higher bandwidth and lower latency. 3. Trusted Platform Module (TPM) 2.0 technology provides hardware-based, security-related functions. 4. 3D Noise Reduction+ Camera (3DNR+) restrains signal noise and increase image quality under poor lighting conditions. 5. Spatial Array Microphone (3 Mic) solution effortlessly switches between immersive 3D audio and pinpointed directional focus. 6. Sign-in with your face or fingerprint through Windows Hello, and easily authenticate to online services from FIDO 2.	

*Product specification, functions and appearance may vary by models and differ from country to country. All specifications are subject to change without notice.
*On some devices, Copilot+ PC experiences require free updates available starting later this year and continuing into 2025. Timing varies by device and region.
See aka.ms/copilotpluspcs.



Prestige 16 / A16 / 14 / 13
PrestigePro 16 / 14
THE ESSENCE OF ELITE

MSI recommends Windows 11 Pro for business.

Model Name	Prestige 16 AI Evo B2HM	Prestige 16 AI+ Evo B2VMG	PrestigePro 16 AI B2HV
Processor	Intel® Core™ Ultra 7 processor 255H	Up to Intel® Core™ Ultra 9 processor 288V	Intel® Core™ Ultra 7 processor 255H
Operating System	Windows 11 Home / Windows 11 Pro (MSI recommends Windows 11 Pro for business.)		
Memory	LPDDR5 onboard, up to 32GB, dual channel	LPDDR5x-8533 Memory on Package, 32GB, dual channel	LPDDR5 onboard, up to 32GB, dual channel
Display	16" UHD+ (3840 x 2400), 16:10, 100% DCI-P3 (Typical), VESA DisplayHDR™ True Black 600, OLED panel	16" QHD+ (2560 x 1600), 16:10, 100% DCI-P3(Typical), 400nits(Typical), IPS-Level panel 16" UHD+ (3840 x 2400), 16:10, 100% DCI-P3(Typical), OLED panel	16" UHD+ (3840 x 2400), 16:10, 100% DCI-P3 (Typical), VESA DisplayHDR™ True Black 600, OLED panel
Graphics	Intel® Arc™ graphics	Intel® Arc™ GPU 140V	NVIDIA® GeForce RTX™ 4050 Laptop GPU 6GB GDDR6
Storage Slot	2 x NVMe M.2 SSD by PCIe Gen4		1 x NVMe M.2 SSD by PCIe Gen4
Keyboard	Single Backlit Keyboard (White) with Copilot Key		
Sensor	Ambient Light Sensor / Proximity Sensor		
Audio	2 x 2W Stereo Speakers / 1 x Audio combo jack / DTS Audio Processing Spatial Array Microphone (3 Mic) / Hi-Res Audio Ready		2 x 2W Stereo Speakers / 1 x Audio combo jack / DTS Audio Processing Spatial Array Microphone (3 Mic)
I/O Port	2 x Thunderbolt™ 4 (DisplayPort™/ Power Delivery 3.0) 1 x USB 3.2 Gen2 Type-A 1 x SD Card Reader 1 x HDMI™ 2.1 (8K @ 60Hz / 4K @ 120Hz) 1 x Gigabit Ethernet 1 x Kensington Lock		1 x Thunderbolt™ 4 (DisplayPort™/ Power Delivery 3.1) 1 x USB 3.2 Gen2 Type-C / DisplayPort™ / Power Delivery 3.0 1 x USB 3.2 Gen2 Type-A 1 x SD Card Reader, 1 x HDMI™ 2.1 (8K @ 60Hz / 4K @ 120Hz), 1 x Gigabit Ethernet, 1 x Kensington Lock
Communication	Gigabit Ethernet / Intel® Killer™ Wi-Fi 7 BE1750, Bluetooth v5.4	Gigabit Ethernet / Intel® Killer™ Wi-Fi 7 BE1750, Bluetooth v5.4	Gigabit Ethernet / Intel® Killer™ Wi-Fi 7 BE1750, Bluetooth v5.4
Webcam	IR FHD type (30fps@1080p) with HDR & 3D Noise Reduction+ (3DNR+)	IR 5MP type(30fps@1920p) with HDR & 3D Noise Reduction+ (3DNR+)	IR FHD type (30fps@1080p) with HDR & 3D Noise Reduction+ (3DNR+)
Security	Discrete Trusted Platform Module(dTPM) 2.0 / Fingerprint Reader / IR Webcam / Webcam Shutter / Kensington Lock	Discrete Trusted Platform Module(dTPM) 2.0 / Microsoft Pluton Security Technology / Fingerprint Reader / IR Webcam / Webcam Shutter / Kensington Lock	Discrete Trusted Platform Module(dTPM) 2.0/ Fingerprint Reader / IR Webcam / Webcam Shutter/ Kensington Lock
Battery / Adapter	4-Cell, Li-Polymer, 99.9Whr / 100W USB Type-C PD	4-Cell, Li-Polymer, 99.9Whr / 100W Type-C PD	4-Cell, Li-Polymer, 99.9Whr / 140W USB Type-C PD
Dimension/Weight	358.4 (W) x 254.4(D) x 16.85~18.95(H) mm / 1.5 Kg	358.4 (W) x 254.4(D) x 16.85~18.95(H) mm /1.5 Kg	358.4 (W) x 254.4(D) x 16.85~18.95(H) mm / 1.6 Kg
Color	Stellar Gray	Stellar Gray	Stellar Gray
Exclusive Features	1. Lightweight yet sturdy design with Magnesium Aluminum Alloy chassis. 2. OLED display delivers vivid color for more realistic visual experience. 3. Trusted Platform Module (TPM) 2.0 technology provides hardware-based, security-related functions. 4. 3D Noise Reduction+ Camera (3DNR+) restrains signal noise and increase image quality under poor lighting conditions. 5. Spatial Array Microphone (3 Mic) solution effortlessly switches between immersive 3D audio and pinpointed directional focus. 6. Sign-in with your face or fingerprint through Windows Hello, and easily authenticate to online services from FIDO 2.		

*Product specification, functions and appearance may vary by models and differ from country to country. All specifications are subject to change without notice.
*On some devices, Copilot+ PC experiences require free updates available starting later this year and continuing into 2025. Timing varies by device and region.
See aka.ms/copilotpluspcs.

Model Name	Prestige A16 AI+ A3HM	Prestige 14 AI Evo C2HM	PrestigePro 14 AI Evo C2HV
Processor	Up to AMD Ryzen™ AI 9 365 Processor	Intel® Core™ Ultra 7 processor 255H	Intel® Core™ Ultra 7 processor 255H
Operating System	Windows 11 Home / Windows 11 Pro (MSI recommends Windows 11 Pro for business.)		
Memory	LPDDR5x onboard, up to 32GB, dual channel	DDR5, 2 slots, up to 64GB	DDR5, 2 slots, up to 64GB
Display	16" UHD+ (3840 x 2400), 16:10, 100% DCI-P3 (Typical), VESA DisplayHDR™ True Black 600, OLED panel 16" QHD+ (2560 x 1600), 16:10, 165Hz Refresh Rate, 100% DCI-P3(Typical), IPS-Level panel	14" 2.8K (2880 x 1800), 16:10, 100% DCI-P3 (Typical), IPS-Level panel	14" 2.8K (2880 x 1800), 16:10, 100% DCI-P3 (Typical), IPS-Level panel
Graphics	AMD Radeon™ 880M	Intel® Arc™ graphics	NVIDIA® GeForce RTX™ 4050 Laptop GPU 6GB GDDR6
Storage Slot	1 x NVMe M.2 SSD by PCIe Gen4 x4	2 x NVMe M.2 SSD by PCIe Gen4	1 x NVMe M.2 SSD by PCIe Gen4
Keyboard	Single Backlit Keyboard (White) with Copilot Key		
Sensor	Ambient Light Sensor / Proximity Sensor		
Audio	2 x 2W Stereo Speakers 1 x Audio combo jack DTS Audio Processing Spatial Array Microphone (3 Mic) Hi-Res Audio Ready		
I/O Port	2 x USB4® Type-C / DisplayPort™ / Power Delivery 3.1 (Thunderbolt™ 4 Compatible) 1 x USB 3.2 Gen2 Type-A 1 x microSD card reader 1 x HDMI™ 2.1 (8K@ 60Hz / 4K@ 120Hz)	2 x Thunderbolt™ 4 (DisplayPort™/ Power Delivery 3.0) 1 x USB 3.2 Gen2 Type-A 1 x HDMI™ 2.1 (8K @ 60Hz / 4K @ 120Hz) 1 x Gigabit Ethernet 1 x Kensington Lock	1 x Thunderbolt™ 4 (DisplayPort™/ Power Delivery 3.1) 1 x USB 3.2 Gen2 Type-C / DisplayPort™ / Power Delivery 3.0 1 x USB3.2 Gen2 Type-A 1 x HDMI™ 2.1 (8K @ 60Hz / 4K @ 120Hz) 1 x Gigabit Ethernet 1 x Kensington Lock
Communication	Wi-Fi 7, Bluetooth v5.4	Gigabit Ethernet / Intel® Killer™ Wi-Fi 7 BE1750, Bluetooth v5.4	
Webcam	IR FHD type (30fps@1080p) with HDR & 3D Noise Reduction+ (3DNR+)		
Security	Discrete Trusted Platform Module(dTPM) 2.0 / Microsoft Pluton Security Technology / Fingerprint Reader / IR Webcam / Webcam Shutter	Discrete Trusted Platform Module(dTPM) 2.0/ Fingerprint Reader / IR Webcam / Webcam Shutter/ Kensington Lock	
Battery / Adapter	4-Cell, Li-Polymer, 82Whr / 100W USB Type-C PD	4-Cell, Li-Polymer, 90Whr / 100W USB Type-C PD	4-Cell, Li-Polymer 90Whr / 140W USB Type-C PD
Dimension/Weight	358(W) x 258.55(D) x 16.9~17.35(H) mm / 1.9 Kg	313.4 (W) x 246.5(D) x 18.95(H) mm / 1.7 Kg	313.4 (W) x 246.5(D) x 18.95(H) mm 1.7 Kg
Color	Urban Silver	Stellar Gray	Stellar Gray
Exclusive Features	1. OLED Display delivers vivid color to have more realistic visual experience. 2. Wi-Fi 7 redefines internet experience with higher bandwidth and lower latency. 3. Trusted Platform Module (TPM) 2.0 technology provides hardware-based, security-related functions. 4. 3D Noise Reduction+ Camera (3DNR+) restrains signal noise and increase image quality under poor lighting conditions. 5. Spatial Array Microphone (3 Mic) solution effortlessly switches between immersive 3D audio and pinpointed directional focus.		

*Product specification, functions and appearance may vary by models and differ from country to country. All specifications are subject to change without notice.
*On some devices, Copilot+ PC experiences require free updates available starting later this year and continuing into 2025. Timing varies by device and region.
See aka.ms/copilotpluspcs.

MSI recommends Windows 11 Pro for business.

Model Name	Prestige 14 AI+ Evo C2VMG	Prestige 13 AI Evo A2HM	Prestige 13 AI+ Evo A2VMG
Processor	Intel® Core™ Ultra 7 processor 258V	Intel® Core™ Ultra 7 processor 255H	Up to Intel® Core™ Ultra 9 processor 288V
Operating System	Windows 11 Home / Windows 11 Pro (MSI recommends Windows 11 Pro for business.)		
Memory	LPDDR5x-8533 Memory on Package, 32GB, dual channel	LPDDR5 onboard, up to 32GB, dual channel	LPDDR5x-8533 Memory on Package, 32GB, dual channel
Display	14" 2.8K (2880 x 1800), 16:10, 120 Hz Refresh Rate, 100% DCI-P3 (Typical), OLED panel 14" FHD+ (1920 x 1200), 16:10, 144 Hz Refresh Rate, 100% SRGB(Typ.), IPS-Level panel	13.3" 2.8K (2880 x 1800), 16:10, 100% DCI-P3 (Typical), VESA DisplayHDR™ True Black 500, OLED panel	13.3" 2.8K (2880 x 1800), 16:10, 100% DCI-P3 (Typical), OLED panel
Graphics	Intel® Arc™ GPU 140V	Intel® Arc™ graphics	Intel® Arc™ GPU 140V
Storage Slot	2 x NVMe M.2 SSD by PCIe Gen4	1 x NVMe M.2 SSD by PCIe Gen4	1 x NVMe M.2 SSD by PCIe Gen4 x4
Keyboard	Single Backlit Keyboard (White) with Copilot Key		
Sensor	Ambient Light Sensor / Proximity Sensor		
Audio	2 x 2W Stereo Speakers 1 x Audio combo jack DTS Audio Processing Spatial Array Microphone (3 Mic) Hi-Res Audio Ready		
I/O Port	2 x Thunderbolt™ 4 (DisplayPort™/ Power Delivery 3.0) 1 x USB 3.2 Gen2 Type-A 1 x HDMI™ 2.1 (8K @ 60Hz / 4K @ 120Hz) 1 x Gigabit Ethernet 1 x Kensington Lock	2 x Thunderbolt™ 4 (DisplayPort™/ Power Delivery 3.0) 1 x USB 3.2 Gen1 Type-A 1 x HDMI™ 2.1 (8K@60Hz / 4K@120Hz) 1 x microSD Card Reader 1 x Kensington Lock	
Communication	Gigabit Ethernet / Intel® Killer™ Wi-Fi 7 BE1750, Bluetooth v5.4	Intel® Killer™ Wi-Fi 7 BE1750, Bluetooth v5.4	Intel® Killer™ Wi-Fi 7 BE1750, Bluetooth v5.4
Webcam	IR 5MP type(30fps@1920p) with HDR & 3D Noise Reduction+ (3DNR+)	IR FHD type (30fps@1080p) with HDR & 3D Noise Reduction+ (3DNR+)	IR 5MP type(30fps@1920p) with HDR & 3D Noise Reduction+ (3DNR+)
Security	Discrete Trusted Platform Module(dTPM) 2.0 Microsoft Pluton Security Technology Fingerprint Reader / IR Webcam Webcam Shutter / Kensington Lock	Discrete Trusted Platform Module(dTPM) 2.0 / Fingerprint Reader / IR Webcam / Webcam Shutter / Kensington Lock	Discrete Trusted Platform Module(dTPM) 2.0 Microsoft Pluton Security Technology Fingerprint Reader / IR Webcam Webcam Shutter / Kensington Lock
Battery / Adapter	4-Cell, Li-Polymer, 90Whr / 100W USB Type-C PD	4-Cell, Li-Polymer 75Whr / 65W USB Type-C PD	4-Cell, Li-Polymer, 75 Whr/ 65W Type-C PD
Dimension/Weight	313.4 (W) x 246.5(D) x 18.95(H) mm / 1.7 Kg	299(W) x 210(D) x 16.9(H) mm 990 g	299(W) x 210(D) x 16.9(H) mm 990 g
Color	Stellar Gray	Stellar Gray	Stellar Gray
Exclusive Features	1. Lightweight yet sturdy design with Magnesium Aluminum Alloy chassis. (Prestige 13 AI/AI+ Evo) 2. Wi-Fi 7 redefines internet experience with higher bandwidth and lower latency. 3. Trusted Platform Module (TPM) 2.0 technology provides hardware-based, security-related functions. 4. 3D Noise Reduction+ Camera (3DNR+) restrains signal noise and increase image quality under poor lighting conditions. 5. Spatial Array Microphone (3 Mic) solution effortlessly switches between immersive 3D audio and pinpointed directional focus. 6. Sign-in with your face or fingerprint through Windows Hello, and easily authenticate to online services from FIDO		

*Product specification, functions and appearance may vary by models and differ from country to country. All specifications are subject to change without notice.
*On some devices, Copilot+ PC experiences require free updates available starting later this year and continuing into 2025. Timing varies by device and region.
See aka.ms/copilotpluspcs.



Venture / VenturePro series
Drive Your Vision Forward

MSI recommends Windows 11 Pro for business.

Model Name	Venture 17 AI A1M VenturePro 17 AI A1V	Venture 16 AI A1M VenturePro 16 AI A1V	Venture 15 AI A1M VenturePro 15 AI A1V	Venture 14 AI A1M
Processor	Up to Intel® Core™ Ultra 7 Processor 155H	Up to Intel® Core™ Ultra 7 Processor 155H	Up to Intel® Core™ Ultra 7 Processor 155H	Up to Intel® Core™ Ultra 7 Processor 155H
Operating System	Windows 11 Home / Windows 11 Pro (MSI recommends Windows 11 Pro for business.)			
Memory	DDR5, 2 slots, up to 96GB			
Display	17.3" FHD (1920x1080), 144Hz Refresh Rate, IPS-Level panel	16" 2K (2048 x 1280), 16:10, 120Hz Refresh Rate, 100% DCI-P3 (Typical), OLED panel	15.6" FHD (1920x1080), 144Hz Refresh Rate, IPS-Level panel	14" 2.8K (2880 x 1800), 16:10, 120Hz Refresh Rate, 100% DCI-P3 (Typical), OLED panel
Graphics	NVIDIA® GeForce RTX™ 4060 Laptop GPU 8GB GDDR6 (A1VFG) NVIDIA® GeForce RTX™ 4050 Laptop GPU 6GB GDDR6 (A1VEG) NVIDIA® GeForce RTX™ 3050 Laptop GPU 6GB GDDR6 96-bit (A1UDXG) Intel® Arc™ graphics (A1MG)	NVIDIA® GeForce RTX™ 4060 Laptop GPU 8GB GDDR6 (A1VFG) NVIDIA® GeForce RTX™ 4050 Laptop GPU 6GB GDDR6 (A1VEG) Intel® Arc™ graphics (A1MG)	NVIDIA® GeForce RTX™ 4060 Laptop GPU 8GB GDDR6 (A1VFG) NVIDIA® GeForce RTX™ 4050 Laptop GPU 6GB GDDR6 (A1VEG) NVIDIA® GeForce RTX™ 3050 Laptop GPU 6GB GDDR6 96-bit (A1UDXG) Intel® Arc™ graphics (A1MG)	Intel® Arc™ graphics
Storage Slot	1 x NVMe M.2 SSD by PCIe Gen4 x4			
Keyboard	Single Backlit Keyboard (White) with Copilot Key			
Audio	2 x 2W Stereo Speakers / 1 x Audio combo jack / DTS Audio Processing Spatial Array Microphone (3 Mic) / Hi-Res Audio Ready			
I/O Port	1 x USB 3.2 Gen1 Type-C / DisplayPort™ / Power Delivery 3.0 (A1V) 1 x USB 3.2 Gen2 Type-C / DisplayPort™ / Power Delivery 3.0 (A1M) 2 x USB 3.2 Gen1 Type-A 1 x HDMI™ 2.1 (4K@60Hz) 1 x Gigabit Ethernet 1 x Kensington Lock			1 x USB 3.2 Gen2 Type-C / DisplayPort™ / Power Delivery 3.0 2 x USB 3.2 Gen1 Type-A 1 x HDMI™ 2.1 (4K@60Hz) 1 x Gigabit Ethernet 1 x Kensington Lock
Communication	Gigabit Ethernet / Intel® Wi-Fi 6E AX211, Bluetooth v5.3			
Webcam	HD type (30fps@720p)			
Security	Firmware Trusted Platform Module(fTPM) 2.0 / Webcam Shutter / Kensington Lock			
Battery	4-Cell, Li-Polymer, 55.2Whr			
Power Adapter	120W(A1V) / 90W(A1M)			90W
Dimension / Weight	399.3(W) x 258(D) x 21.2~23.2(H) mm / 2.4 Kg	359.3(W) x 245.25(D) x 22.15~23.15(H) mm / 1.9 Kg	359.3(W) x 245.25(D) x 22.15~23.15(H) mm / 1.9 Kg	315.6(W) x 235.5(D) x 19.3~21.6(H) mm / 1.7 Kg
Color	Solid Gray			
Exclusive Features	1. Through MSI AI Noise Cancellation Pro, it can filter 360 degree noise for enhanced conference call experience. 2. Enhance your privacy with webcam shutter, offering direct and reliable privacy control. 3. Spatial Array Microphone (3 Mic) solution effortlessly switches between immersive 3D audio and pinpointed directional focus. 4. Build with PCR(Post-Consumer Recycled Resin) to have more eco-friendly producing process. 5. Meet the MIL-STD 810H military standard for reliability and durability. 6. MSI Center S helps control and customize your MSI laptop and full suite of useful features.			

*Product specification, functions and appearance may vary by models and differ from country to country. All specifications are subject to change without notice.

MSI recommends Windows 11 Pro for business.

Model Name	Venture A17 AI+ A3HM VenturePro A17 AI+ A3HW		Venture A16 AI+ A3HM VenturePro A16 AI+ A3HW	
Processor	Up to AMD Ryzen™ AI 7 350 Processor			
Operating System	Windows 11 Home / Windows 11 Pro (MSI recommends Windows 11 Pro for business.)			
Memory	DDR5, 2 slots, up to 96GB			
Display	17.3" FHD (1920x1080), 144Hz Refresh Rate, IPS-Level panel		16" 2K (2048 x 1280), 16:10, 120Hz Refresh Rate, 100% DCI-P3 (Typical), OLED panel	
Graphics	NVIDIA® GeForce RTX™ 50 Series Laptop GPU (A3HW) AMD Radeon™ 860M (A3HM)			
Storage Slot	1 x NVMe M.2 SSD by PCIe Gen4 x4			
Keyboard	Single Backlit Keyboard (White) with Copilot Key			
Audio	2 x 2W Stereo Speakers / 1 x Audio combo jack / DTS Audio Processing Spatial Array Microphone (3 Mic) / Hi-Res Audio Ready			
I/O Port	1 x USB 3.2 Gen1 Type-C / DisplayPort™ / Power Delivery 3.0 (A3HW) 1 x USB 3.2 Gen2 Type-C / DisplayPort™ / Power Delivery 3.0 (A3HM) 2 x USB 3.2 Gen1 Type-A 1 x HDMI™ 2.1 (4K@60Hz) 1 x Gigabit Ethernet 1 x Kensington Lock			
Communication	Gigabit Ethernet / AMD® Wi-Fi 6E, Bluetooth v5.3			
Webcam	IR HD type (30fps@720p)			
Security	Firmware Trusted Platform Module(FTPM) 2.0 / Microsoft Pluton Security Technology / Webcam Shutter Kensington Lock / Secured-core PCs			
Battery	4-Cell, Li-Polymer, 75Whr			
Power Adapter	120W(A3HW) / 90W(A3HM)			
Dimension / Weight	399.3(W) x 258(D) x 21.2~23.2(H) mm / 2.4 Kg		359.3(W) x 245.25(D) x 22.15~23.15(H) mm / 1.9 Kg	
Color	Solid Gray			
Exclusive Features	1. Through MSI AI Noise Cancellation Pro, it can filter 360 degree noise for enhanced conference call experience. 2. Enhance your privacy with webcam shutter, offering direct and reliable privacy control. 3. Spatial Array Microphone (3 Mic) solution effortlessly switches between immersive 3D audio and pinpointed directional focus. 4. Build with PCR(Post-Consumer Recycled Resin) to have more eco-friendly producing process. 5. Meet the MIL-STD 810H military standard for reliability and durability. 6. MSI Center S helps control and customize your MSI laptop and full suite of useful features.			

*Product specification, functions and appearance may vary by models and differ from country to country. All specifications are subject to change without notice.
*On some devices, Copilot+ PC experiences require free updates available starting later this year and continuing into 2025. Timing varies by device and region.
See aka.ms/copilotpluspcs.

Model Name	Venture A15 AI+ A3HM VenturePro A15 AI+ A3HW	Venture A14 AI+ A3HM VenturePro A14 AI+ A3HW
Processor	Up to AMD Ryzen™ AI 7 350 Processor	
Operating System	Windows 11 Home / Windows 11 Pro (MSI recommends Windows 11 Pro for business.)	
Memory	DDR5, 2 slots, up to 96GB	
Display	15.6" FHD (1920x1080), 144Hz Refresh Rate, IPS-Level panel	14" 2.8K (2880 x 1800), 16:10, 120Hz Refresh Rate, 100% DCI-P3 (Typical), OLED panel
Graphics	NVIDIA® GeForce RTX™ 50 Series Laptop GPU (A3HW) AMD Radeon™ 860M (A3HM)	
Storage Slot	1 x NVMe M.2 SSD by PCIe Gen4 x4	
Keyboard	Single Backlit Keyboard (White) with Copilot Key	
Audio	2 x 2W Stereo Speakers / 1 x Audio combo jack / DTS Audio Processing Spatial Array Microphone (3 Mic) / Hi-Res Audio Ready	
I/O Port	1 x USB 3.2 Gen1 Type-C / DisplayPort™ / Power Delivery 3.0 (A3HW) 1 x USB 3.2 Gen2 Type-C / DisplayPort™ / Power Delivery 3.0 (A3HM) 2 x USB 3.2 Gen1 Type-A 1 x HDMI™ 2.1 (4K@60Hz) 1 x Gigabit Ethernet 1 x Kensington Lock	
Communication	Gigabit Ethernet / AMD® Wi-Fi 6E, Bluetooth v5.3	
Webcam	IR HD type (30fps@720p)	
Security	Firmware Trusted Platform Module(FTPM) 2.0 / Microsoft Pluton Security Technology / Webcam Shutter Kensington Lock / Secured-core PCs	
Battery	4-Cell, Li-Polymer, 75Whr	
Power Adapter	120W(A3HW) / 90W(A3HM)	
Dimension / Weight	359.3(W) x 245.25(D) x 22.15~23.15(H) mm / 1.9 Kg	315.6(W) x 235.5(D) x 19.3~21.6(H) mm / 1.7 Kg
Color	Solid Gray	
Exclusive Features	1. Through MSI AI Noise Cancellation Pro, it can filter 360 degree noise for enhanced conference call experience. 2. Enhance your privacy with webcam shutter, offering direct and reliable privacy control. 3. Spatial Array Microphone (3 Mic) solution effortlessly switches between immersive 3D audio and pinpointed directional focus. 4. Build with PCR(Post-Consumer Recycled Resin) to have more eco-friendly producing process. 5. Meet the MIL-STD 810H military standard for reliability and durability. 6. MSI Center S helps control and customize your MSI laptop and full suite of useful features.	

*Product specification, functions and appearance may vary by models and differ from country to country. All specifications are subject to change without notice.
*On some devices, Copilot+ PC experiences require free updates available starting later this year and continuing into 2025. Timing varies by device and region.
See aka.ms/copilotpluspcs.



Modern 15 H/14 H
Live in everyday passion

MSI recommends Windows 11 Pro for business.

Model Name	Modern 15 H AI C2HM	Modern 15 H C2RM	Modern 14 H D2RM
Processor	Up to Intel® Core™ Ultra 7 processor 255H	Up to Intel® Core™ 9 processor 270H	Up to Intel® Core™ 9 processor 270H
Operating System	Windows 11 Home / Windows 11 Pro (MSI recommends Windows 11 Pro for business.)		
Memory	DDR5, 2 slots, up to 96GB	DDR4-3200, 2 slots, up to 64GB	
Display	15.6" FHD(1920x1080), IPS-Level panel		14" FHD+(1920x1200), 16:10, IPS-Level panel
Graphics	Intel® Arc™ graphics	Intel® Graphics	Intel® Graphics
Storage Slot	1 x NVMe M.2 SSD by PCIe Gen4 x4		
Keyboard	Single Backlit Keyboard (White) with Copilot Key		
Audio	2 x 2W Stereo Speakers 1 x Audio combo jack Hi-Res Audio Ready		2 x 2W Stereo Speakers 1 x Audio combo jack Spatial Array Microphone (3 Mic) Hi-Res Audio Ready
I/O Port	1 x USB 3.2 Gen2 Type-C / DisplayPort™ / Power Delivery 3.0 3 x USB 3.2 Gen1 Type-A 1 x HDMI™ 2.1 (4K@60Hz) 1 x microSD Card Reader	1 x USB 3.2 Gen2 Type-C / DisplayPort™ / Power Delivery 3.0 3 x USB 3.2 Gen2 Type-A 1 x HDMI™ 2.1 (4K@60Hz) 1 x microSD Card Reader	1 x Thunderbolt™ 4 (DisplayPort™/ Power Delivery 3.0) 3 x USB 3.2 Gen1 Type-A 1 x HDMI™ 2.1 (4K@60Hz) 1 x Gigabit Ethernet 1 x Kensington Lock
Communication	Intel® Wi-Fi 6E AX211, Bluetooth v5.3		Gigabit Ethernet Intel® Wi-Fi 6E AX211, Bluetooth v5.3
Webcam	HD type (30fps@720p) with 3D Noise Reduction (3DNR)		HD type (30fps@720p) with 3D Noise Reduction (3DNR)
Security	Firmware Trusted Platform Module(fTPM) 2.0 Webcam Shutter		Firmware Trusted Platform Module(fTPM) 2.0 / Kensington Lock Webcam Shutter
Battery	3-Cell, Li-Polymer, 39.3/53.8Whr		3-Cell, Li-Polymer, 39.3/53.8Whr
Power Adapter	90W		
Dimension / Weight	359 (W) x 241 (D) x 19.6 (H) mm / 1.9 Kg		313.7(W) x 236(D) x 18.6(H) mm 1.6 Kg
Color	Classic Black		
Exclusive Features	1. MSI AI Engine sense your behavior and automatically adjust the system settings that best fit your need. 2. 3D Noise Reduction Camera (3DNR) restrains signal noise and increase image quality under poor lighting conditions. 3. Enhance your privacy with webcam shutter, offering direct and reliable privacy control. 4. Through MSI AI Noise Cancellation Pro, it can filter 360 degree noise for enhanced conference call experience. (Modern 14 H) 5. 180° lay-flat and Flip-n-Share make it easy to share your ideas with others. 6. MSI Center S helps control and customize your MSI laptop and full suite of useful features.		

*Product specification, functions and appearance may vary by models and differ from country to country. All specifications are subject to change without notice.



Modern 15 / 14 / 13
Live in everyday passion

MSI recommends Windows 11 Pro for business.

Model Name	Modern 15 F1M	Modern 14 F1M	Modern 13 F1M
Processor	Up to Intel® Core™ 7 processor 150U		
Operating System	Windows 11 Home / Windows 11 Pro (MSI recommends Windows 11 Pro for business.)		
Memory	DDR4-3200, 2 Slots, up to 64GB		
Display	15.6" FHD(1920x1080), IPS-Level panel	14" FHD(1920x1080), IPS-Level panel	13.3" FHD(1920x1080), IPS-Level panel
Graphics	Intel® Graphics		
Storage Slot	1 x NVMe M.2 SSD by PCIe Gen4 x4		
Keyboard	Single Backlit Keyboard (White) with Copilot Key		
Audio	2 x 2W Stereo Speakers 1 x Audio combo jack Hi-Res Audio Ready		
I/O Port	1 x USB 3.2 Gen2 Type-C / DisplayPort™ / Power Delivery 3.0 3 x USB 3.2 Gen1 Type-A 1 x HDMI™ (4K@30Hz) 1 x microSD Card Reader 1 x RJ45 1 x Kensington Lock 1 x DC-in		1 x USB 3.2 Gen2 Type-C / DisplayPort™ / Power Delivery 3.0 2 x USB 3.2 Gen1 Type-A 1 x HDMI™ (4K@30Hz) 1 x microSD Card Reader 1 x RJ45 1 x Kensington Lock 1 x DC-in
Communication	Gigabit Ethernet / Intel® Wi-Fi 6E AX211, Bluetooth v5.3		
Webcam	HD type (30fps@720p)		
Security	Webcam Shutter / Firmware Trusted Platform Module(fTPM) 2.0 / Kensington Lock		
Battery	3-Cell, Li-Polymer, 46.8 Whr		
Adapter	65W		
Dimension/Weight	358.9 (W) x 235.9 (D) x 19.9 (H) mm 1.7 Kg	323.9 (W) x 217.2 (D) x 19.9 (H) mm 1.5 Kg	308.4 (W) x 210.5 (D) x 19.9 (H) mm 1.33 Kg
Color	Platinum Gray / Urban Silver		
Exclusive Features	1. Wi-Fi 6E with 6GHz band delivers stunning speed even when sharing the network with numerous users. 2. Exclusive MSI AI Engine sense the user scenarios and adjust to the best performance mode. 3. To pursue the best of the best, the product meets the MIL-STD 810H military standard for reliability and durability. 4. Experience multi-touch gestures and intuitive response with enlarged precision touchpad. 5. Matrix Display 1+2 supports up to 2 external monitors. 6. 180° lay-flat and Flip-n-Share make it easy to share your ideas with others.		

*Product specification, functions and appearance may vary by models and differ from country to country. All specifications are subject to change without notice.



reddot winner 2024



Commercial 15 / 14 / 13

Be Green · Be Productive

MSI recommends Windows 11 Pro for business.

Model Name	Commercial 15 B1M	Commercial 14 B1M	Commercial 13 B1M	Commercial 14 H A2RM
Processor	Up to Intel® Core™ 7 processor 150U			Up to Intel® Core™ 7 processor 240H
Operating System	Windows 11 Home / Windows 11 Pro (MSI recommends Windows 11 Pro for business.)			
Memory	DDR4-3200, 2 slots, up to 64GB			
Display	15.6" FHD(1920x1080), IPS-Level panel	14" FHD(1920x1080), IPS-Level panel	13.3" FHD(1920x1080), IPS-Level panel	14" FHD+(1920x1200), 16:10, IPS-Level panel
Graphics	Intel® Graphics			Intel® Graphics
Storage Slot	1 x NVMe M.2 SSD by PCIe Gen4 x4			
Keyboard	Single Backlit Keyboard (White) with Copilot Key			
Audio	2 x 2W Stereo Speakers 1 x Audio combo jack DTS Audio Processing Hi-Res Audio Ready			2 x 2W Stereo Speakers 1 x Audio combo jack DTS Audio Processing Spatial Array Microphone (3 Mic) Hi-Res Audio Ready
I/O Port	1 x USB 3.2 Gen2 Type-C / DisplayPort™ / Power Delivery 3.0 3 x USB 3.2 Gen1 Type-A 1 x HDMI™ (4K@30Hz) 1 x microSD Card Reader 1 x Kensington Lock			1 x Thunderbolt™ 4 (DisplayPort™/ Power Delivery 3.0) 3 x USB 3.2 Gen1 Type-A 1 x HDMI™ 2.1 (4K@60Hz) 1 x SD Card Reader(Optional) 1 x Gigabit Ethernet(Optional) 1 x Smart Card Reader(Optional)
Communication	Gigabit Ethernet / Intel® Wi-Fi 6E AX211, Bluetooth v5.3			Gigabit Ethernet(Optional) / Intel® Wi-Fi 6E AX211, Bluetooth v5.3
Webcam	HD type (30fps@720p)			HD type (30fps@720p) with 3D Noise Reduction (3DNR)
Security	Firmware Trusted Platform Module(fTPM) 2.0 / Webcam Shutter / Kensington Lock			Smart Card Reader(Optional) / Kensington Lock / Discrete Trusted Platform Module(dTPM) 2.0 / Fingerprint Reader(Optional) / Webcam Shutter / NFC(Optional)
Battery	3-Cell, Li-Polymer, 46.8Whr			3-Cell, Li-Polymer, 53.8Whr
Power Adapter	65W			90W
Dimension / Weight	358.9 (W) x 235.9 (D) x 19.9 (H) mm / 1.7 Kg	323.9 (W) x 217.2 (D) x 19.9 (H) mm / 1.5 Kg	308.4 (W) x 210.5 (D) x 19.95 (H) mm / 1.34 Kg	313.7 (W) x 236 (D) x 18.6 (H) mm / 1.6 Kg
Color	Classic Black			Solid Gray
Exclusive Features	1. MSI Center S helps control and customize your MSI laptop and full suite of useful features. 2. 180° lay-flat and Flip-n-Share make it easy to share your ideas with others. 3. Meet the MIL-STD 810H military standard for reliability and durability. 4. Support USB-C PD Charging to charge with power bank or PD charger. 5. Enhance your privacy with webcam shutter, offering direct and reliable privacy control. 6. High security applications with Smart Card Reader & NFC (Optional for Commercial 14 H).			

*Product specification, functions and appearance may vary by models and differ from country to country. All specifications are subject to change without notice.