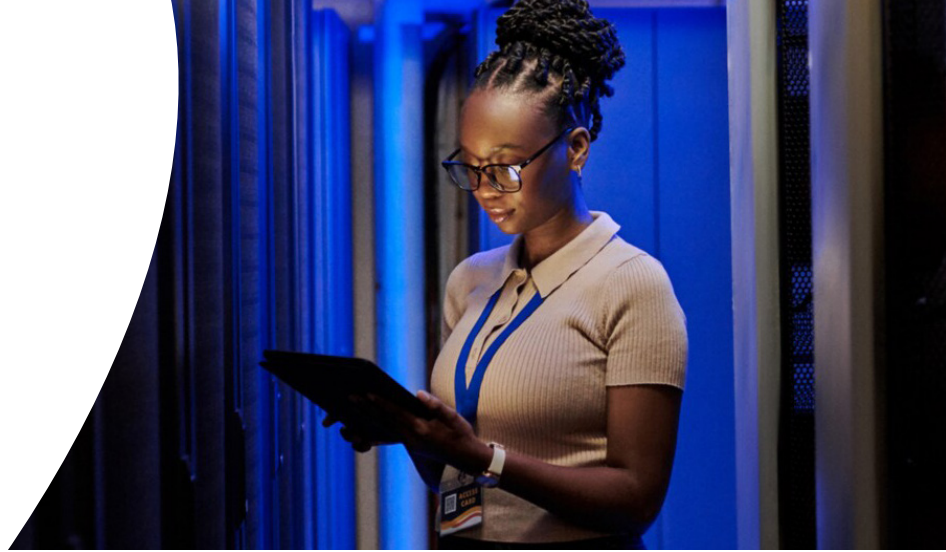


The Data Security Engagement

Security



PARTNER-LED ENGAGEMENT HIGHLIGHTS



Understand the risks of Dark Organizational Data



Learn about the risks organizational insiders may impose



Assess your environment against key data protection standards



Receive an analysis and report on findings and associated risks



Learn about tools and services that can help mitigate risks



Explore recommendations and next steps

83% OF ORGANIZATIONS EXPERIENCE MORE THAN ONE DATA BREACH IN THEIR LIFETIME

Cybersecurity is a constantly shifting landscape. As our digital world continues to grow, so do the risks. According to research, 20% of data breaches are due to internal actors with an average cost of \$15.4M when a malicious insider is involved. Data leaks and theft might have been overshadowed by external threats in the past; however, they have become the common vulnerability and risks that organizations need to address. Data security incidents can happen anytime, anywhere.

INTELLIGENTLY INVESTIGATE AND TAKE ACTION ON DATA SECURITY RISKS

Detecting, investigating, and acting on data security risks in your organization is critical to ensuring trust, creating a safe workplace and protecting company assets and employee and customer privacy.

The **Data Security Engagement** gives you the insights you need to understand data security, privacy and compliance risks in your organization.

As your business-critical data expands and your workforce shifts to remote work, having an integrated approach that can help quickly identify, triage, and act on data security risks is more important than ever.

By participating in this engagement, our experts will work with you to:

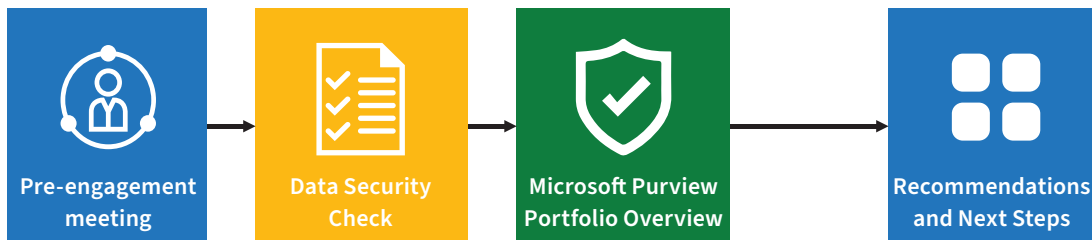
Document your objectives and strategy around data security, privacy and compliance.

Show how to detect, investigate and take action on data security and privacy risks.

Demonstrate ways to accelerate your compliance journey with the latest Microsoft technologies

Provide actionable next steps based on your needs and objectives

DATA SECURITY ENGAGEMENT



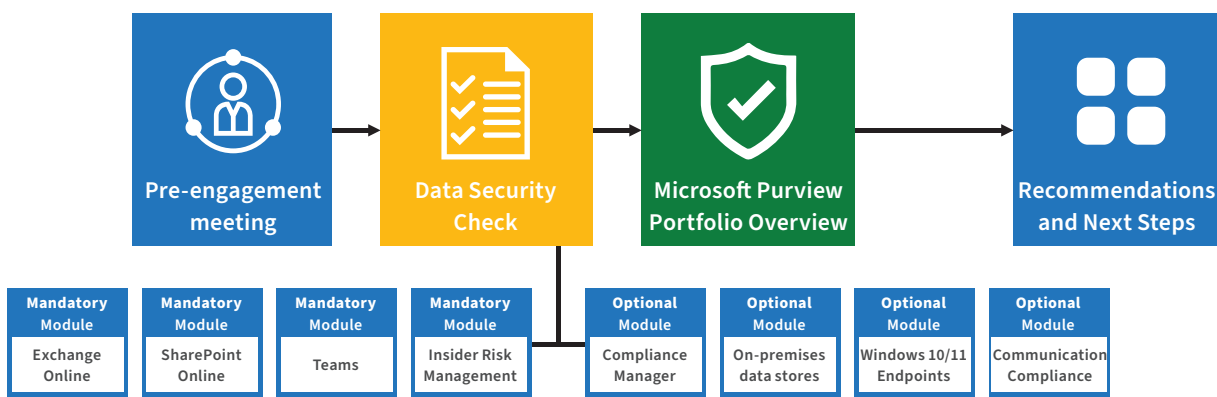
THE DATA SECURITY CHECK UNCOVERS RISKS THAT MIGHT BE HARMFUL TO YOUR ORGANIZATION

The Data Security Check is an integral part of the Data Security Engagement. The Data Security Check leverages Microsoft Purview tools and services in an automated process to:

- Discover data that is stored in the Microsoft 365 Cloud and analyze it for the presence of artifacts that may impose data security risks to the organization.
- Analyze user behaviour for events that impose a risk to the customers organization. These vulnerabilities range from the loss of intellectual property to workplace harassment and more.

The Data Security Check is structured around typical Microsoft 365 services and their associated data repositories that organizations use. At its core, the Data Security Check analyzes user behaviour and scans data repositories related to email, collaboration, and document storage.

Optional modules can be added to extend the Data Security Check to include on-premises data repositories, Windows 10/11 endpoints and more. All activities share a common framework that will allow you to understand the risks that exist in your organization and develop a roadmap to mitigate and protect your company's information.



THE DATA SECURITY CHECK UNCOVERS RISKS THAT MIGHT BE HARMFUL TO YOUR ORGANIZATION

By the end of this engagement, experts in Microsoft compliance will provide you with a:

- A Security Check report that includes findings and insights from the automated discovery process.
- A list of recommendations and actionable next steps that will help mitigate the identified risks.
- Clear look into Microsoft's approach to data security and mitigating and controlling insider risks.
- Optional Compliance Manager Tenant Assessment report with suggestions and top key improvement actions.
- Set of long-term recommendations on your compliance strategy, with key initiatives and tactical next steps.

WHY CDW? NO ONE GETS MICROSOFT LIKE WE DO

CDW is the industry leader in transitioning customers to Microsoft's Cloud environment. With more than 1000 customers using Microsoft Online Services and over seven years working with customers to design hosted solutions, CDW has the expertise your business requires in a Microsoft partner. As a designated "Preferred Deployment Partner", CDW can help your business seamlessly and securely move to the cloud.

For more information, contact your CDW account team at 800.972.3922



The terms and conditions of product sales are limited to those contained on CDW's website at CDW.ca. Notice of objection to and rejection of any additional or different terms in any form delivered by customer is hereby given. CDW®, CDW-G® and PEOPLE WHO GET IT® are registered trademarks of CDW LLC. All other trademarks and registered trademarks are the sole property of their respective owners.